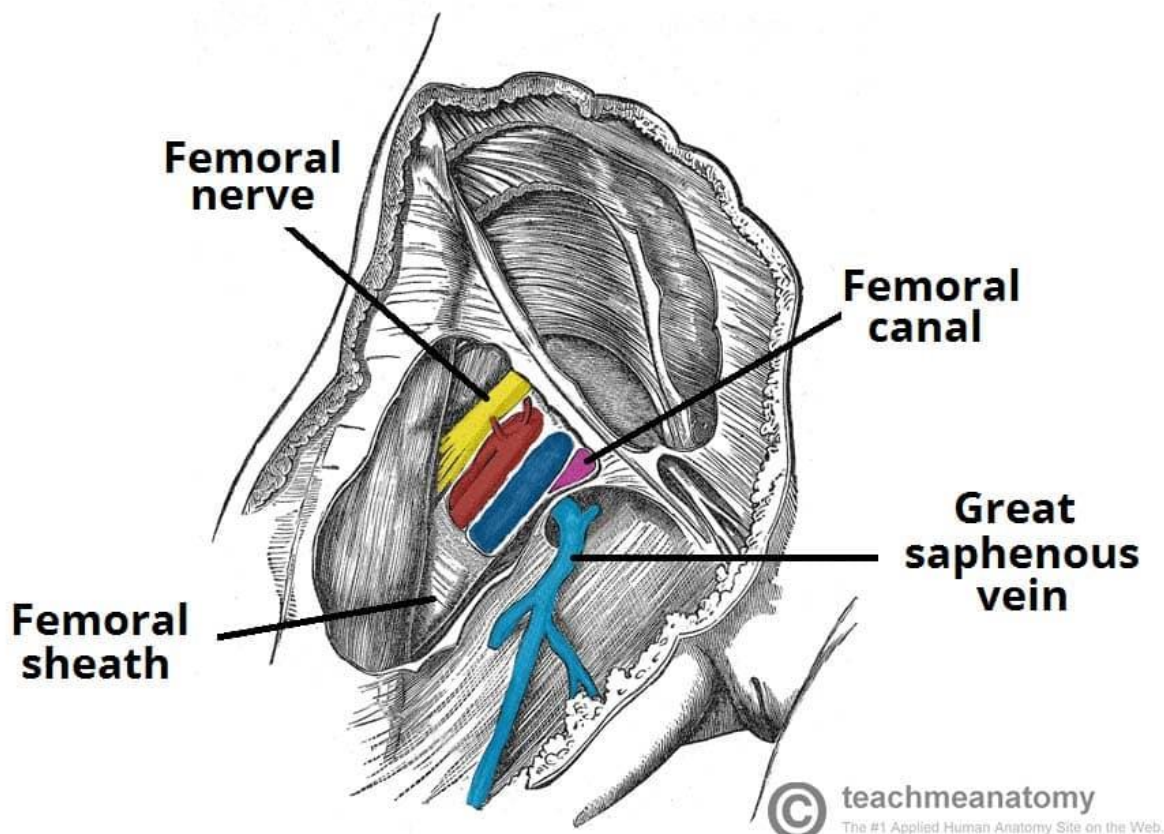
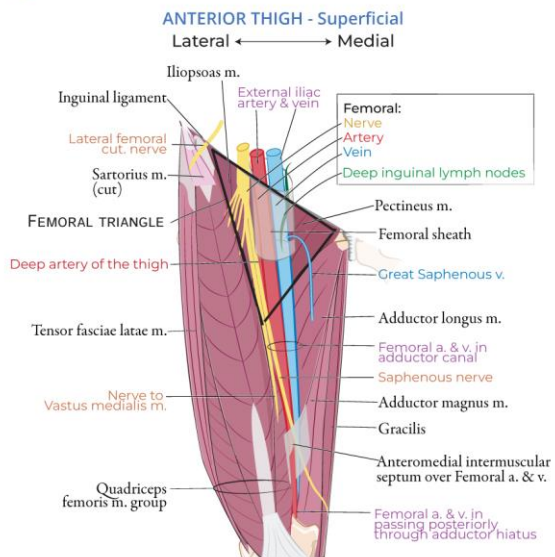


**Topic: Lower Limb – Nerves of Lower Limb:**

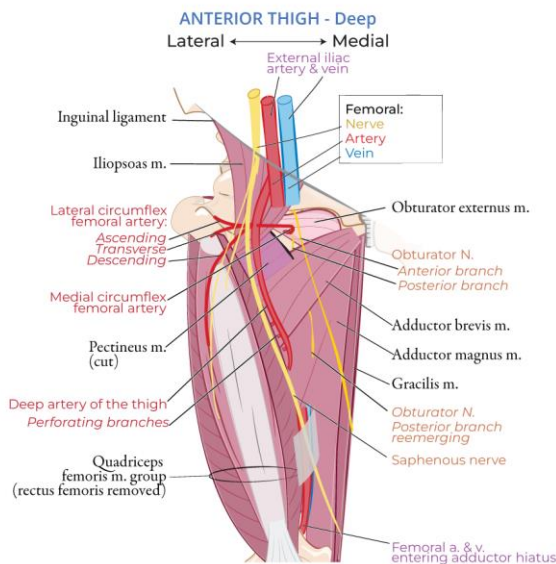


[teachmeanatomy.info](http://teachmeanatomy.info)

**ANTERIOR & MEDIAL THIGH NEUROVASCULATURE**

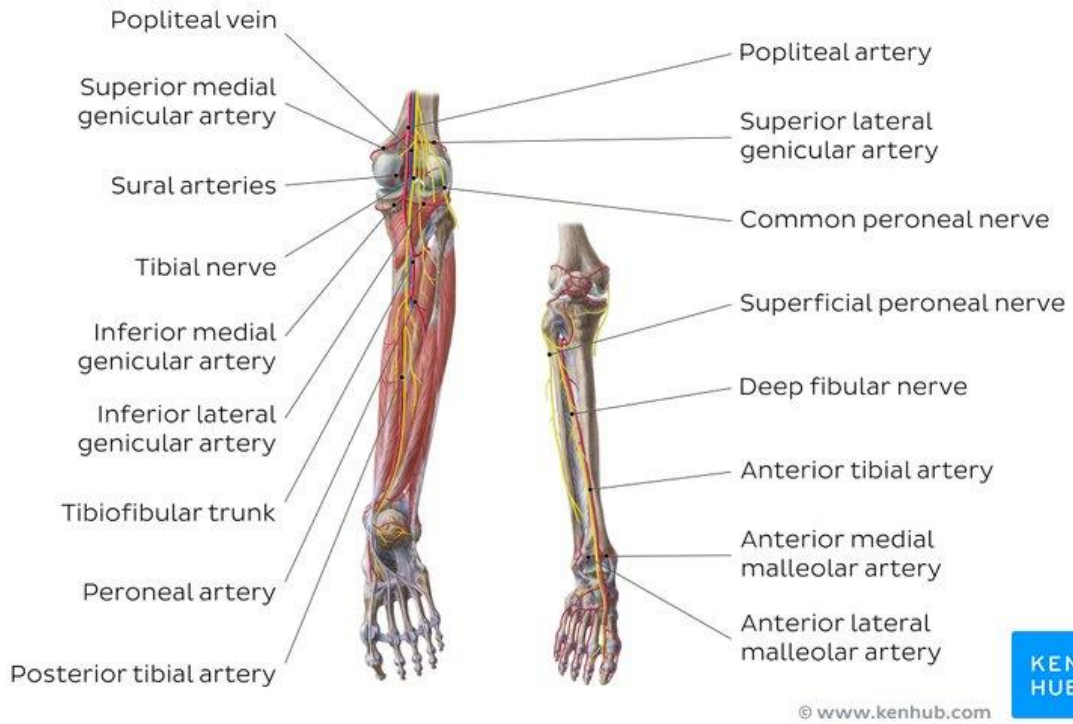


\*Muscles "Cut" out: Sartorius

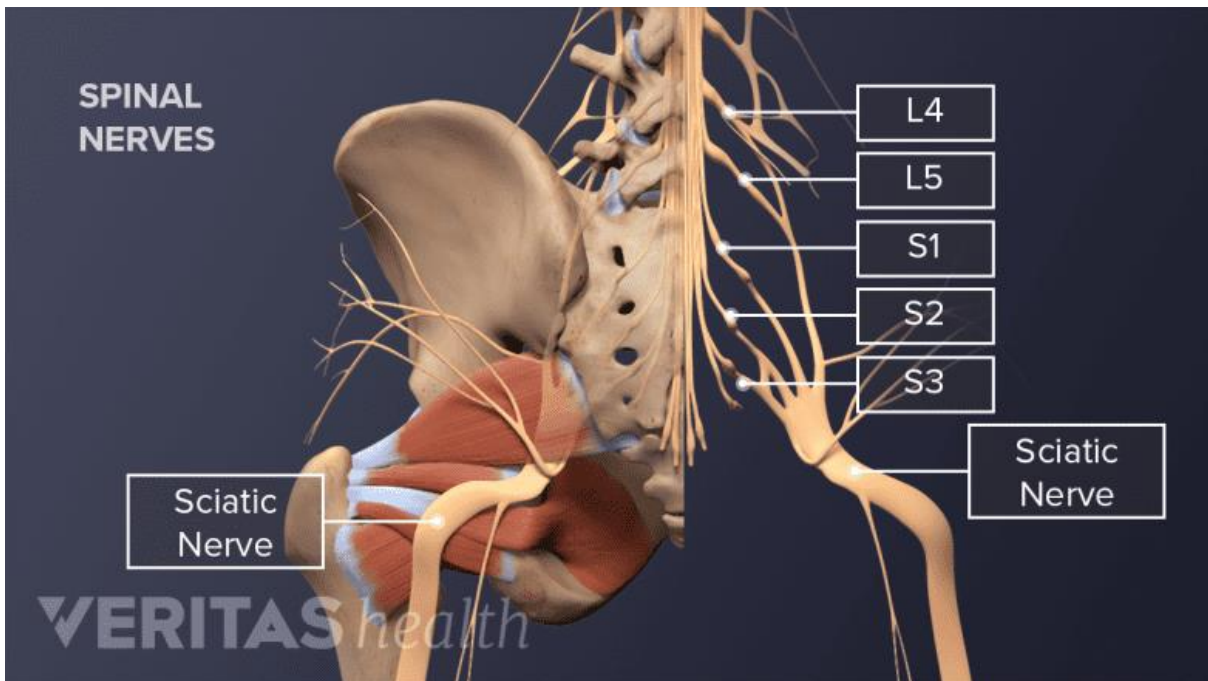


\*Muscles "Cut" out: Rectus Femoris, Pectineus, Adductor longus, Sartorius, TFL

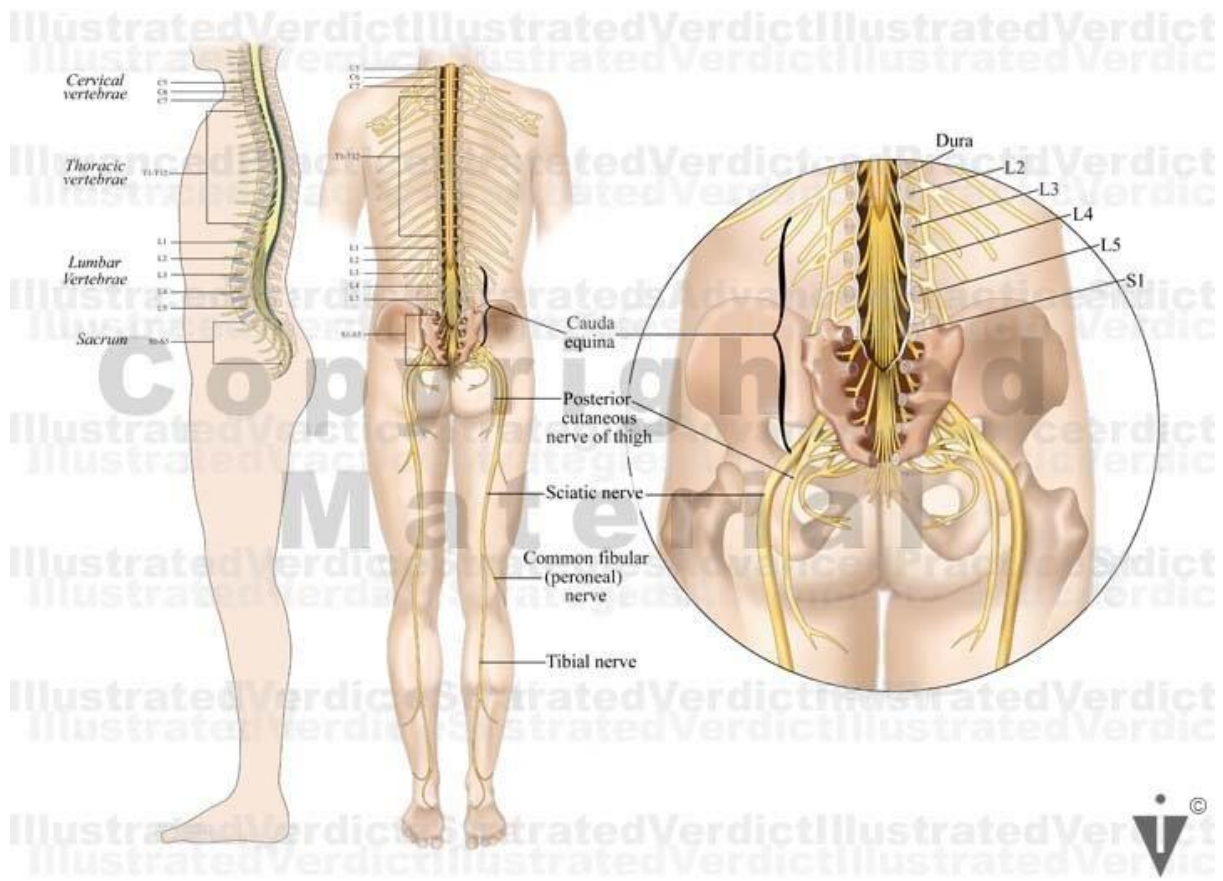
[ditki.com](http://ditki.com)

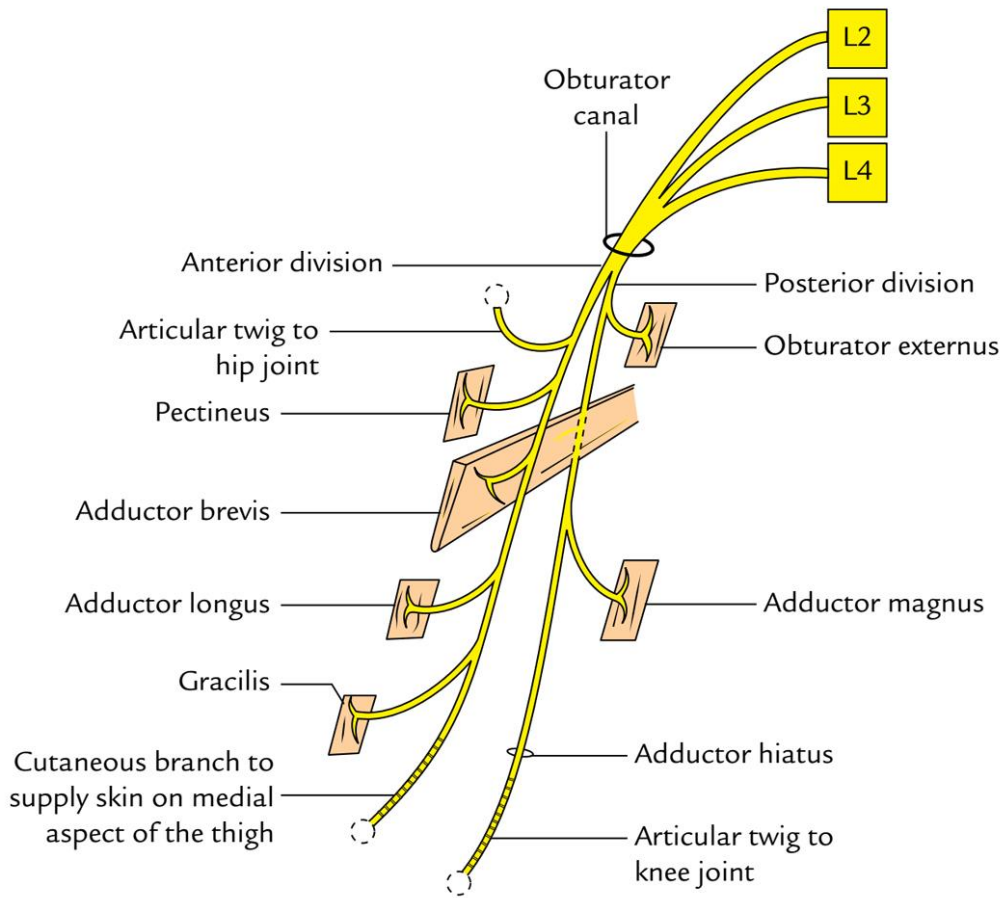


[kenhub.com](http://kenhub.com)

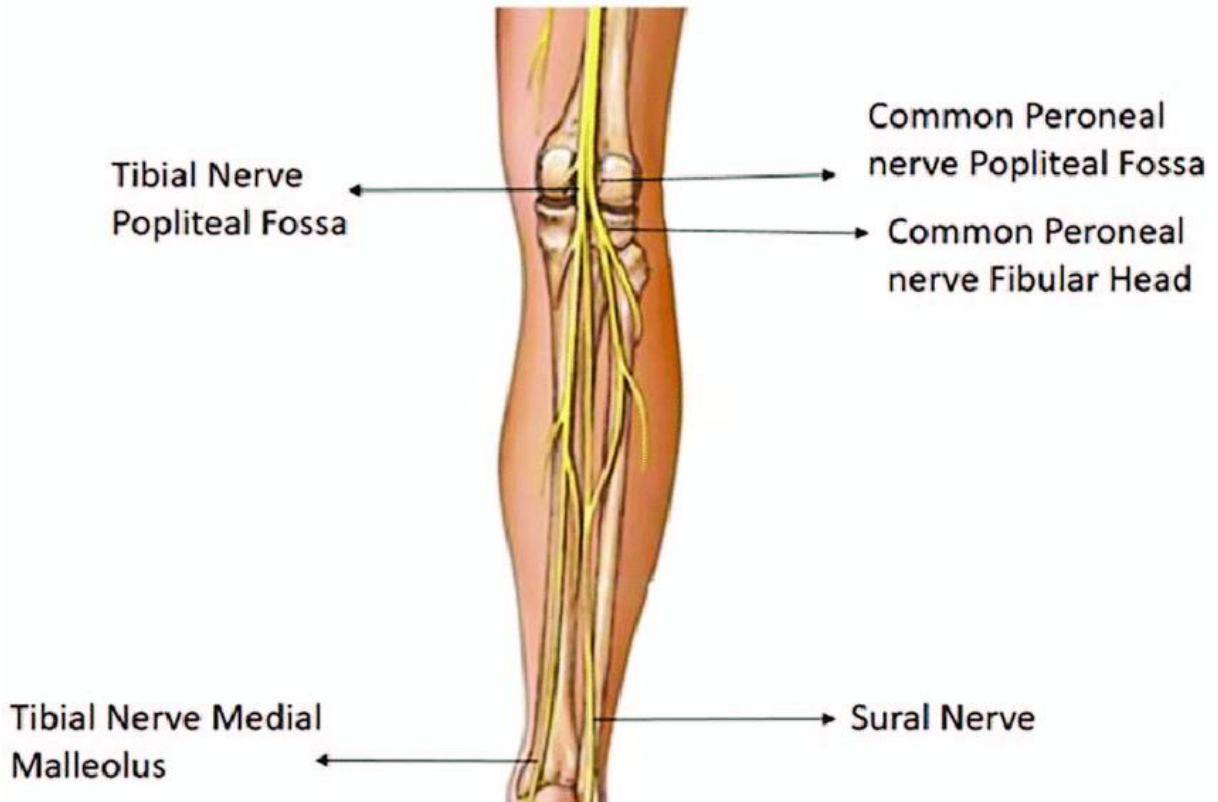


[spine-health.com](http://spine-health.com)

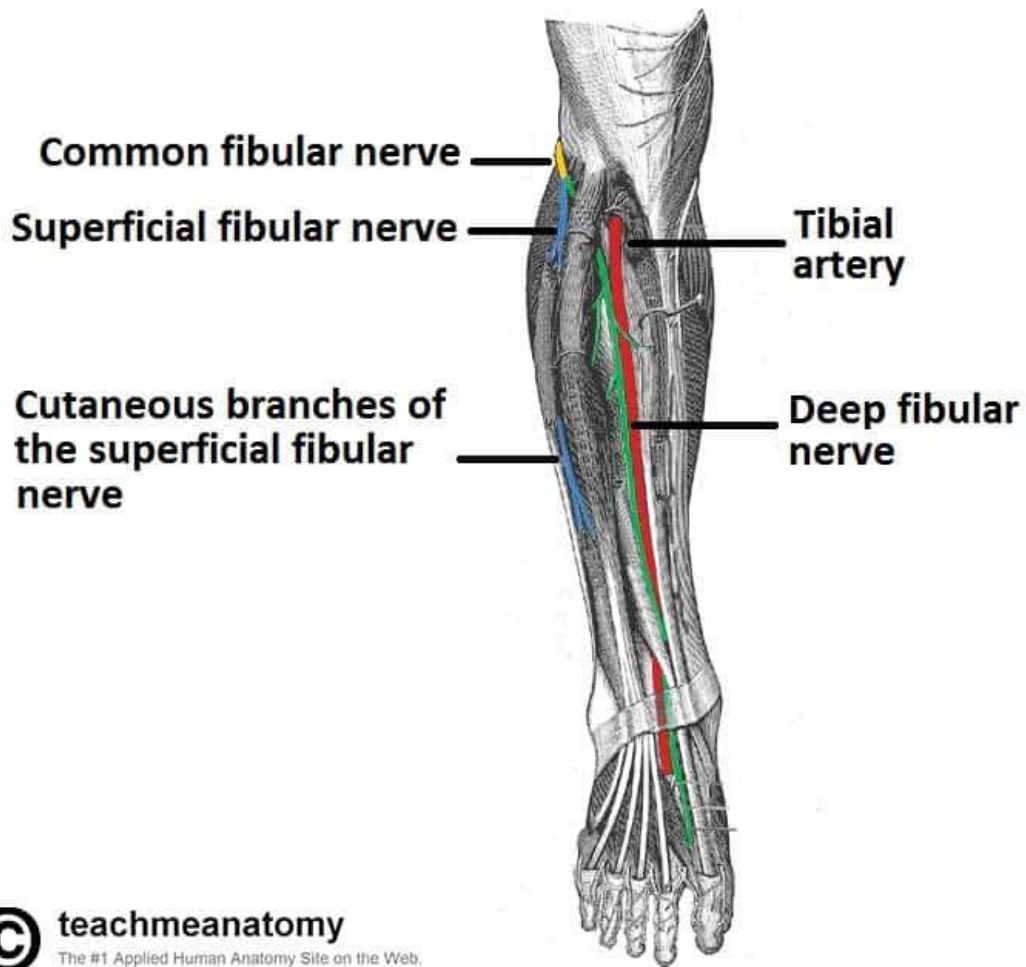




[earthslab.com](http://earthslab.com)

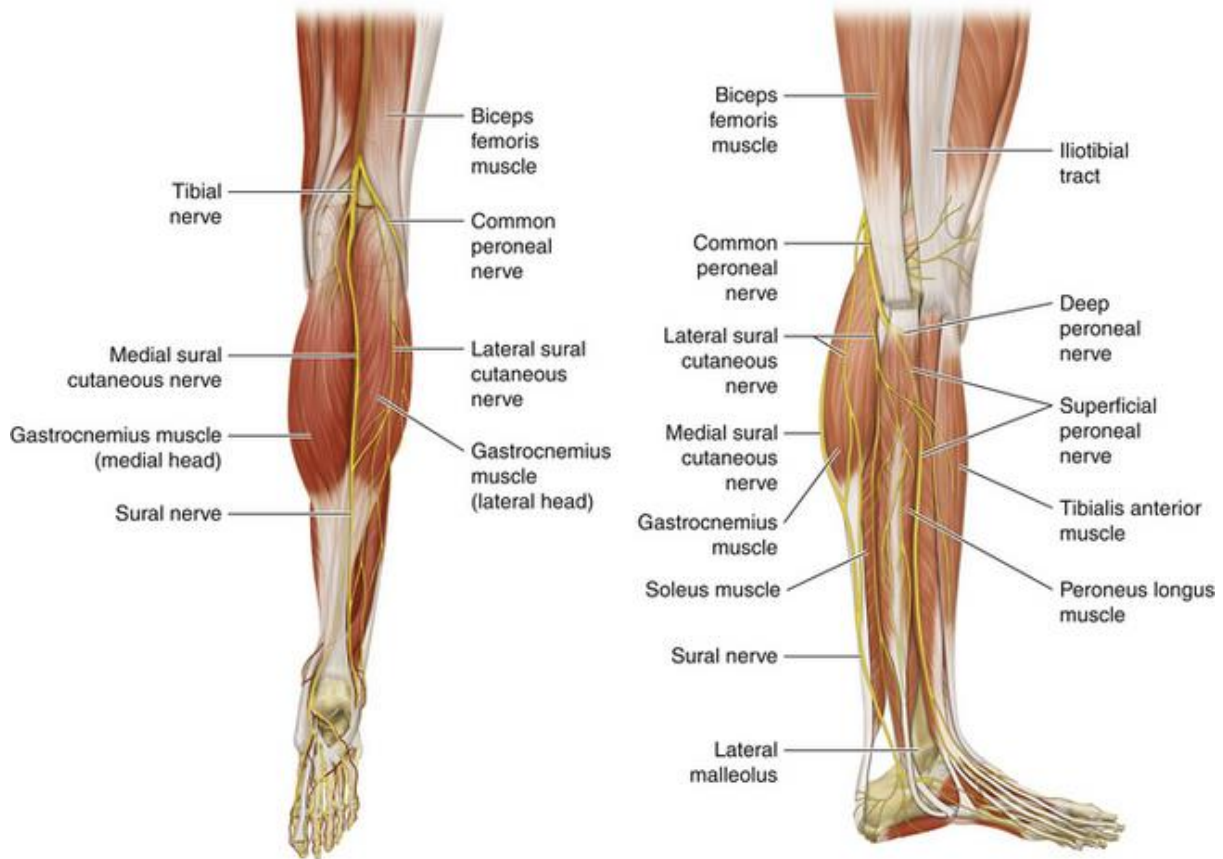


[researchgate.net](http://researchgate.net)



 **teachmeanatomy**  
The #1 Applied Human Anatomy Site on the Web.

[teachmeanatomy.info](http://teachmeanatomy.info)



[neupsykey.com](http://neupsykey.com)

1. The main nerves of the lower limb arise from lumbar and sacral plexuses. Name the largest nerve supplying the lower limb and its root value.
2. Femoral nerve: Roots? It emerges from psoas major and enters thigh beneath which ligament?
3. Motor supply of femoral nerve: Name the main muscle group it innervates (knee extensors) and one important branch to a hip flexor (iliacus).
4. Sensory supply of femoral nerve: Name the large anterior cutaneous branch and the terminal branch supplying medial leg (saphenous nerve).
5. Obturator nerve: Roots? It exits pelvis through which canal and supplies which thigh compartment?
6. Main motor branches of obturator nerve: It divides into anterior and posterior – anterior supplies which three adductors?
7. Sciatic nerve: Roots? It exits pelvis below which muscle and usually divides in the popliteal fossa?
8. The two terminal branches of sciatic: Name them – which is thicker/medial (tibial) and which winds around fibular head (common peroneal)?
9. Tibial nerve: In the popliteal fossa, it gives branches to which muscles (gastrocnemius, soleus, plantaris)?
10. Tibial nerve in leg: Name its two terminal branches under medial malleolus (medial and lateral plantar nerves).

11. Common peroneal (fibular) nerve: Vulnerable at which site (neck of fibula)? Divides into deep and superficial peroneal.
12. Deep peroneal nerve: Motor supply? (Anterior compartment – tibialis anterior, extensors); Sensory? (web space between 1st-2nd toes).
13. Superficial peroneal nerve: Motor to lateral compartment (peroneus longus/brevis); Sensory to dorsum of foot except?
14. Sural nerve: Formed by union of which two nerves (medial sural from tibial + lateral sural from common peroneal)? Sensory to lateral foot.
15. Clinical integration: Weak knee extension + absent knee jerk = lesion of which nerve? Foot drop + inability to evert = which nerve?

**ANSWER KEY:**

1. Sciatic nerve (L4-S3).
2. L2-L4; Inguinal ligament.
3. Quadriceps femoris; Branch to iliacus (and pectineus).
4. Intermediate/anterior cutaneous; Saphenous nerve.
5. L2-L4; Obturator canal; Medial (adductor) compartment.
6. Adductor longus, brevis, gracilis (part).
7. L4-S3; Below piriformis.
8. Tibial and common peroneal (fibular); Common peroneal lateral.
9. Gastrocnemius (both heads), soleus, plantaris, popliteus, tibialis posterior.
10. Medial plantar (medial sole) and lateral plantar (lateral sole + most muscles).
11. Neck of fibula.
12. Anterior compartment muscles; Skin between great and 2nd toe.
13. Eversion (peronei); Except lateral little toe (sural) and first web (deep peroneal).
14. Medial sural cutaneous (tibial) + communicating branch from common peroneal.
15. Femoral nerve; Common peroneal nerve.