

SNS COLLEGE OF PHYSIOTHERAPY

Saravanampatti Post, Coimbatore – 641 035, T.N
(Affiliated by the Tamil Nadu Dr. M. G. R. Medical University, Chennai.)



DEPARTMENT OF PHYSIOTHERAPY- III YEAR

COURSE NAME- COMMUNITY MEDICINE

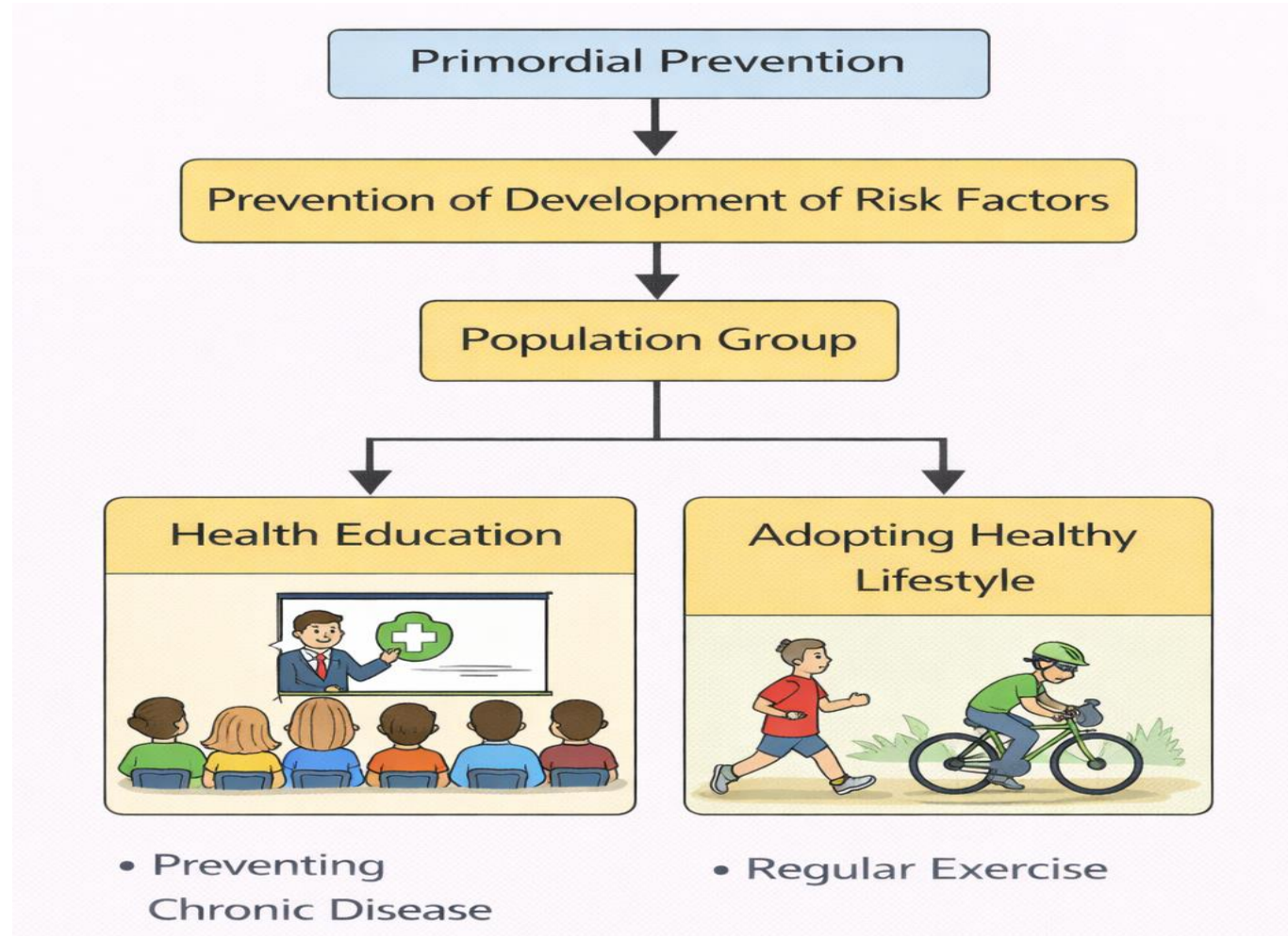
TOPIC- LEVEL OF PREVENTION & MODE OF INTERVENTION

**PREPARED BY- Dr. K. P. BENOSEL PAUL., PT,
ASSISTANT PROFESSOR,
SNSCOPT.**

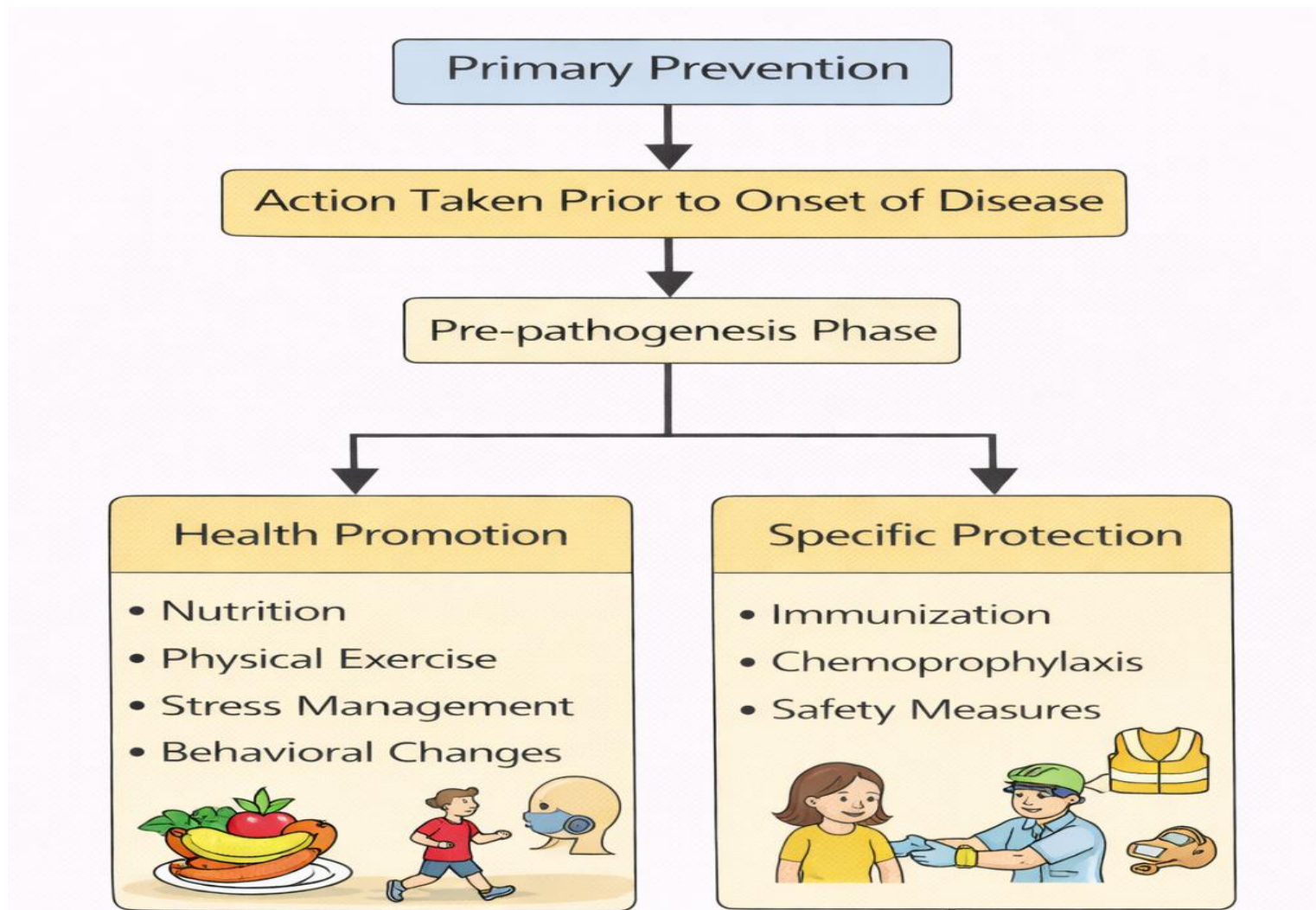
Four level of prevention for disease control:

- Primordial Prevention
- Primary Prevention
- Secondary Prevention
- Tertiory Prevention

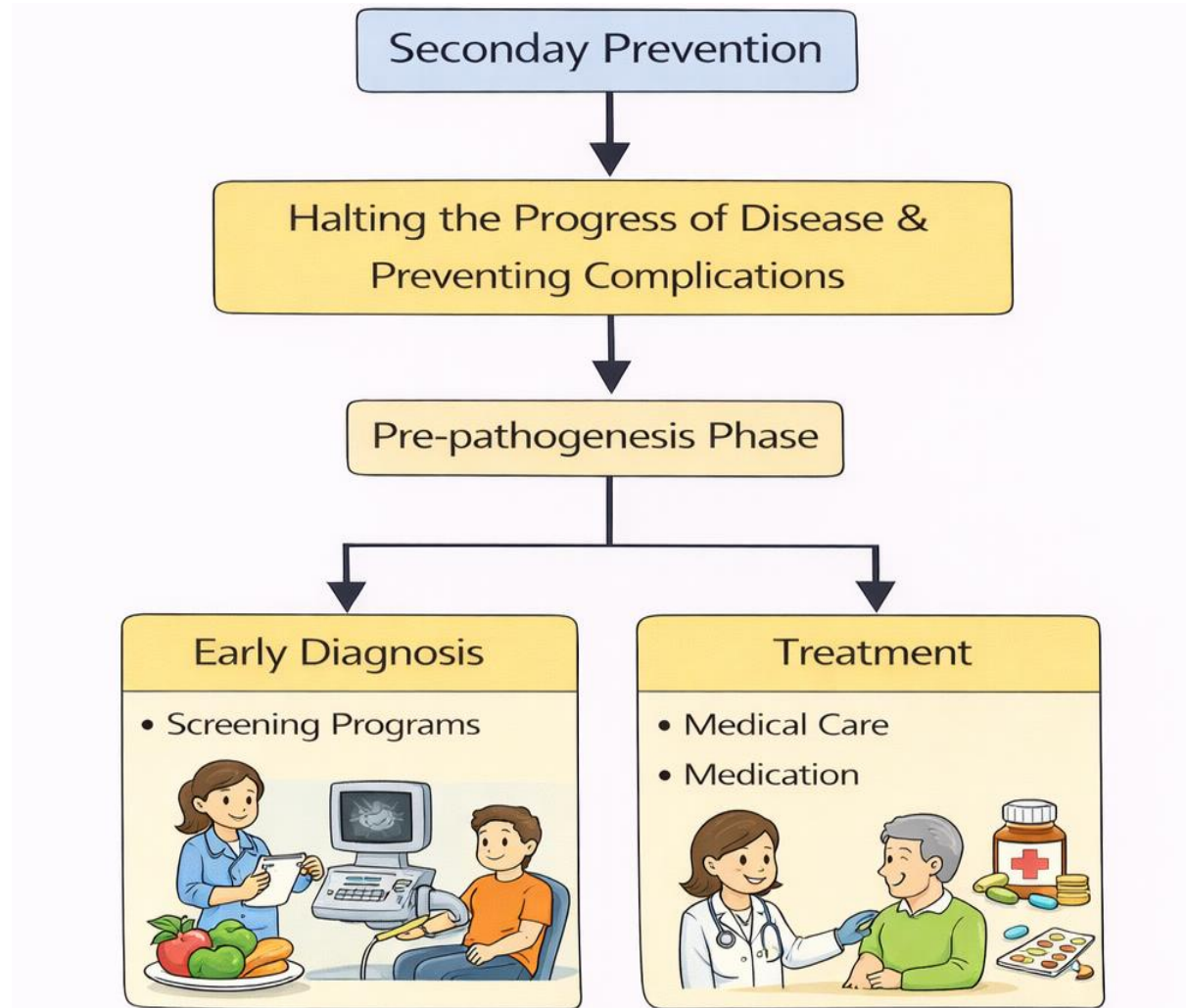
Primordial Prevention:



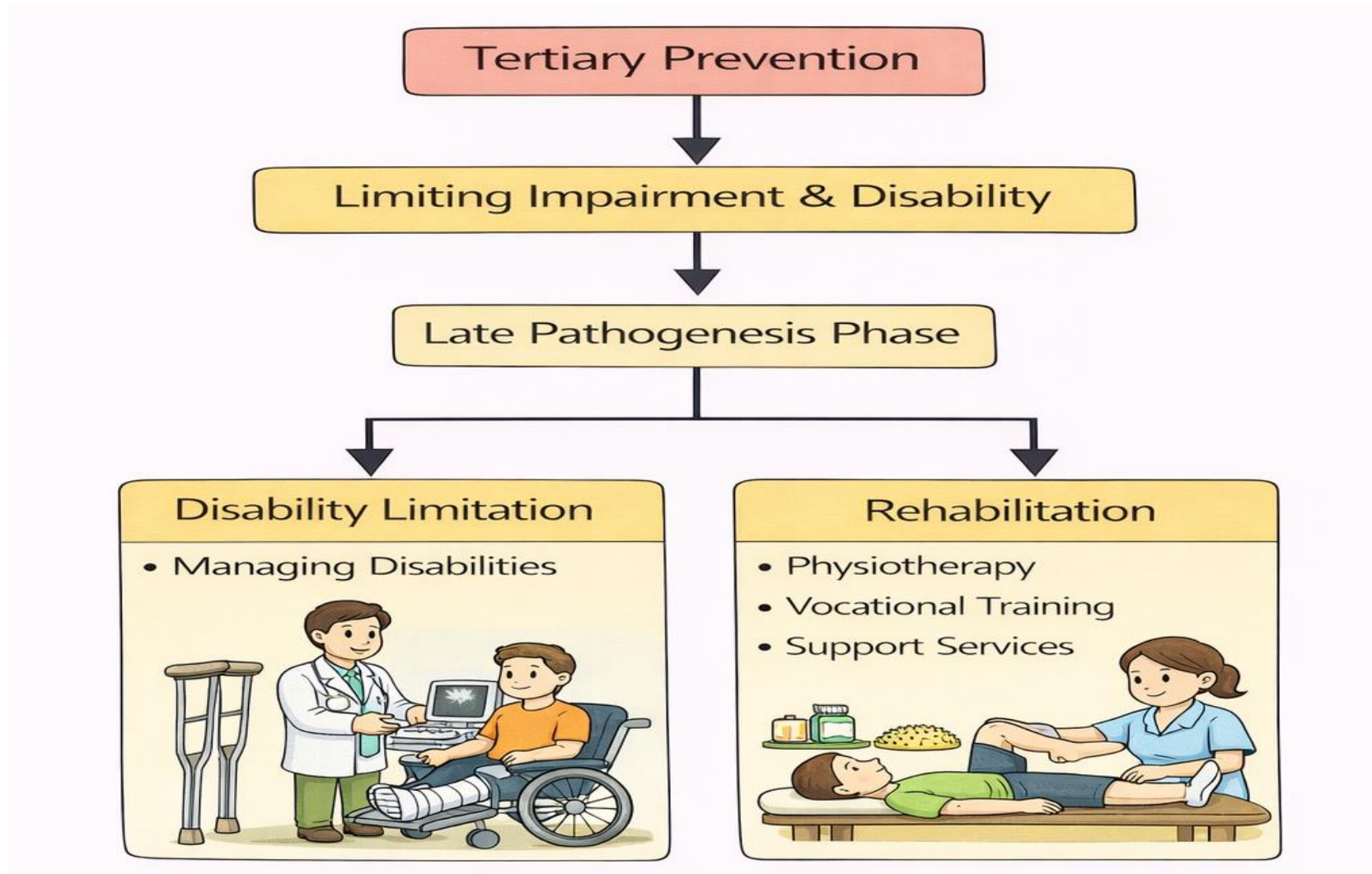
Primary Prevention:



Secondary prevention:



Tertiary prevention:

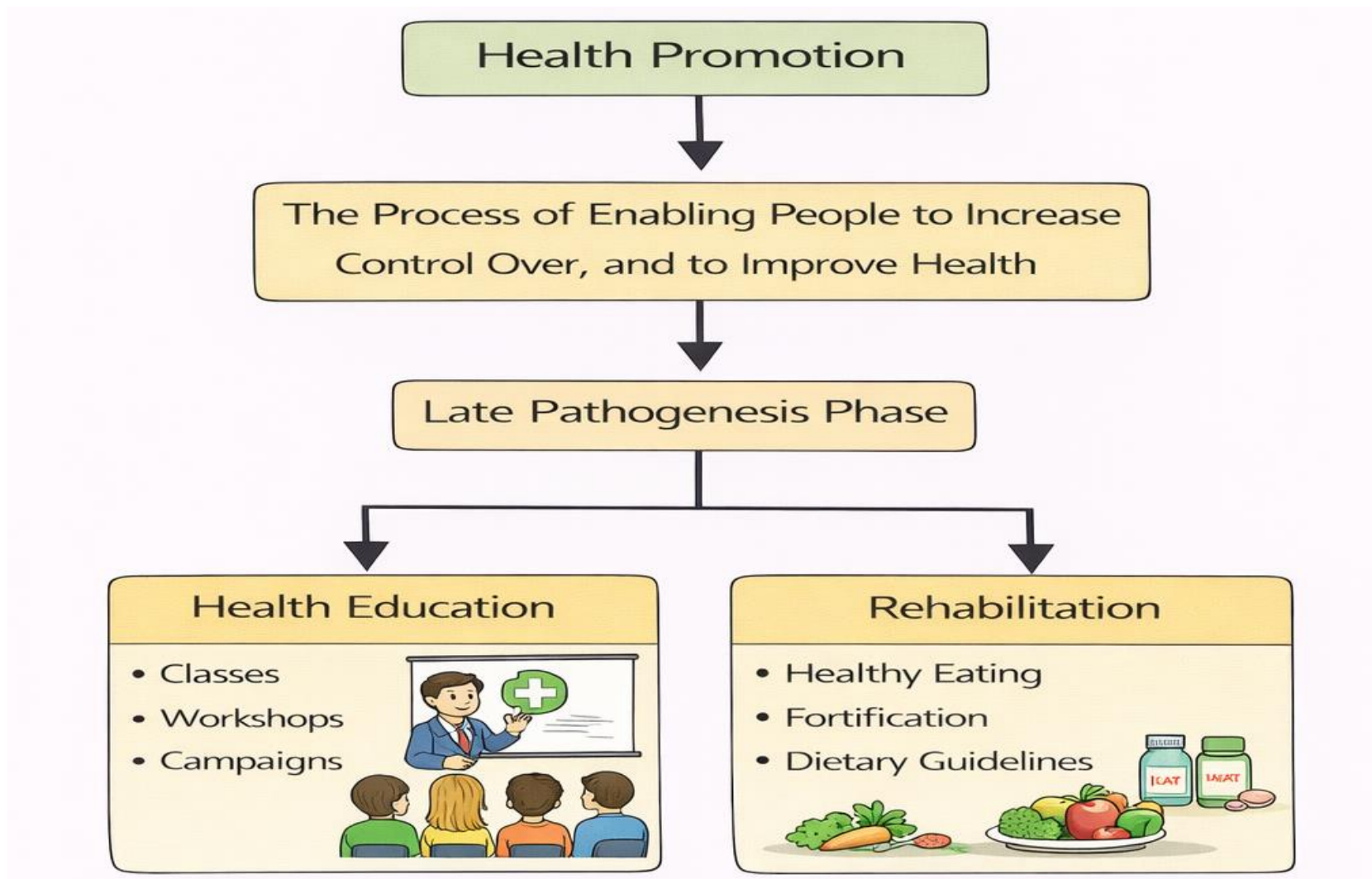


MODE OF INTERVENTION

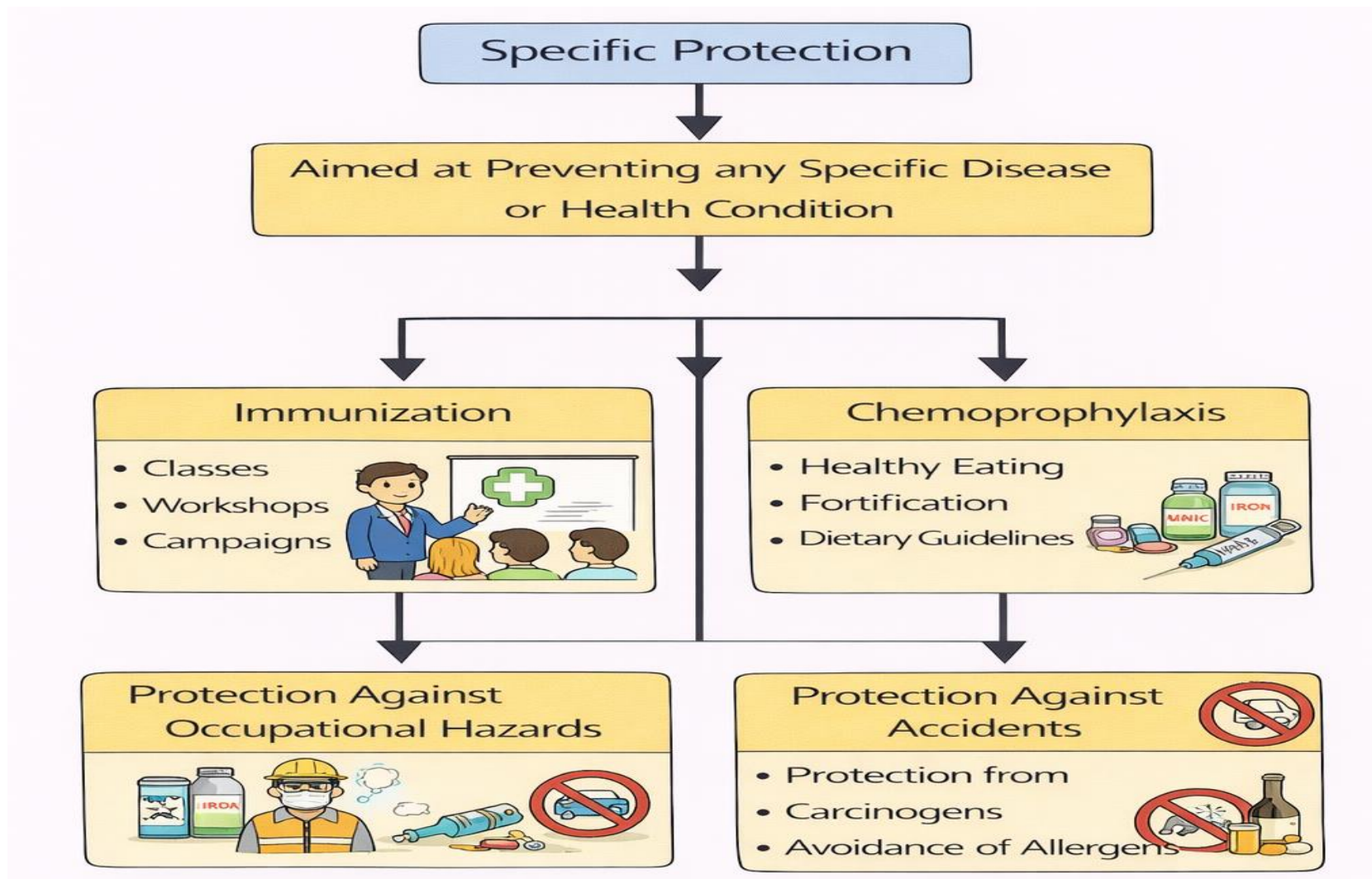
Mode of intervention:

- Health promotion
- Specific protection
- Early diagnosis and treatment
- Disability limitations
- Rehabilitation

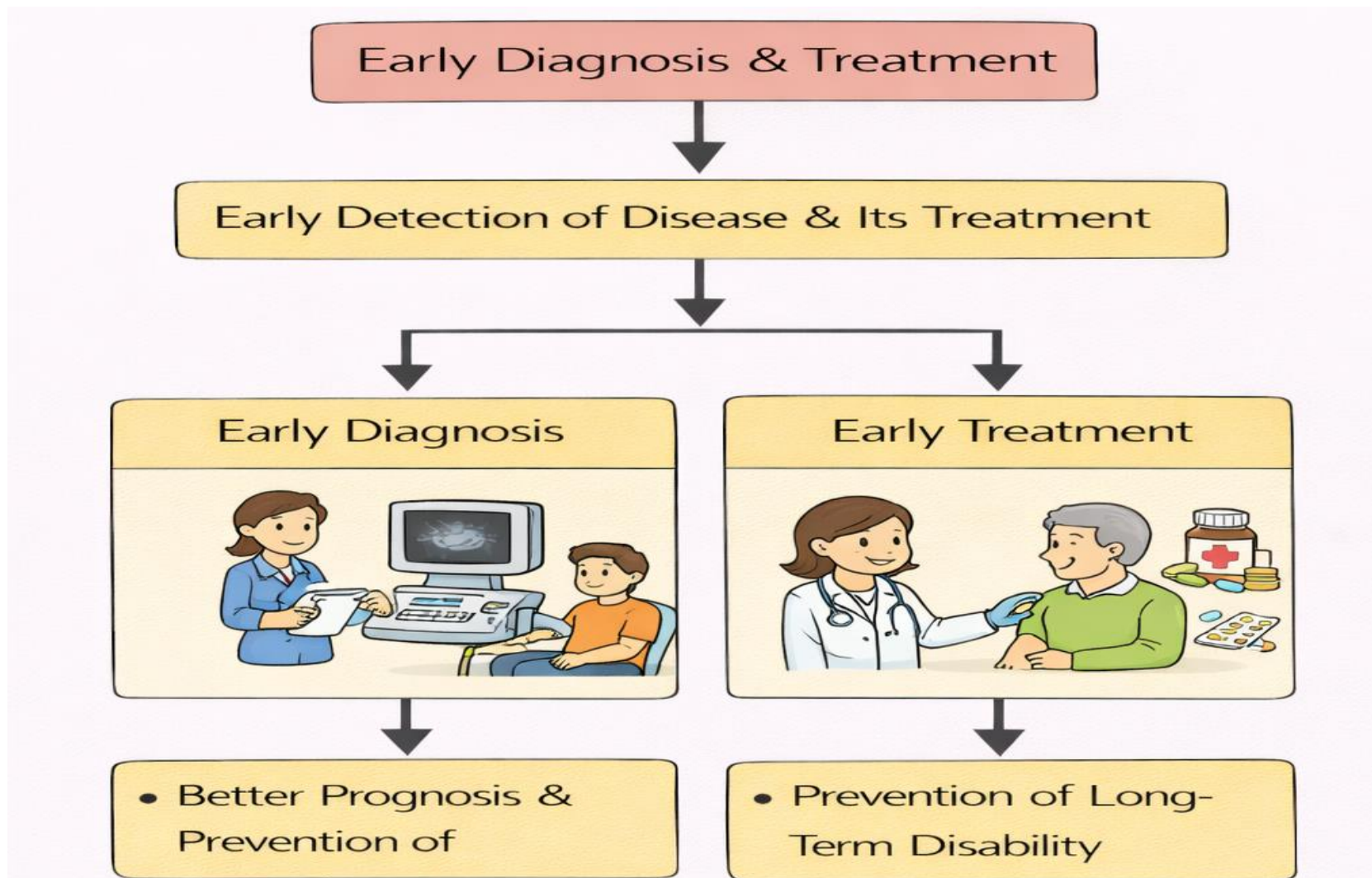
Health promotion:



Specific Protection:



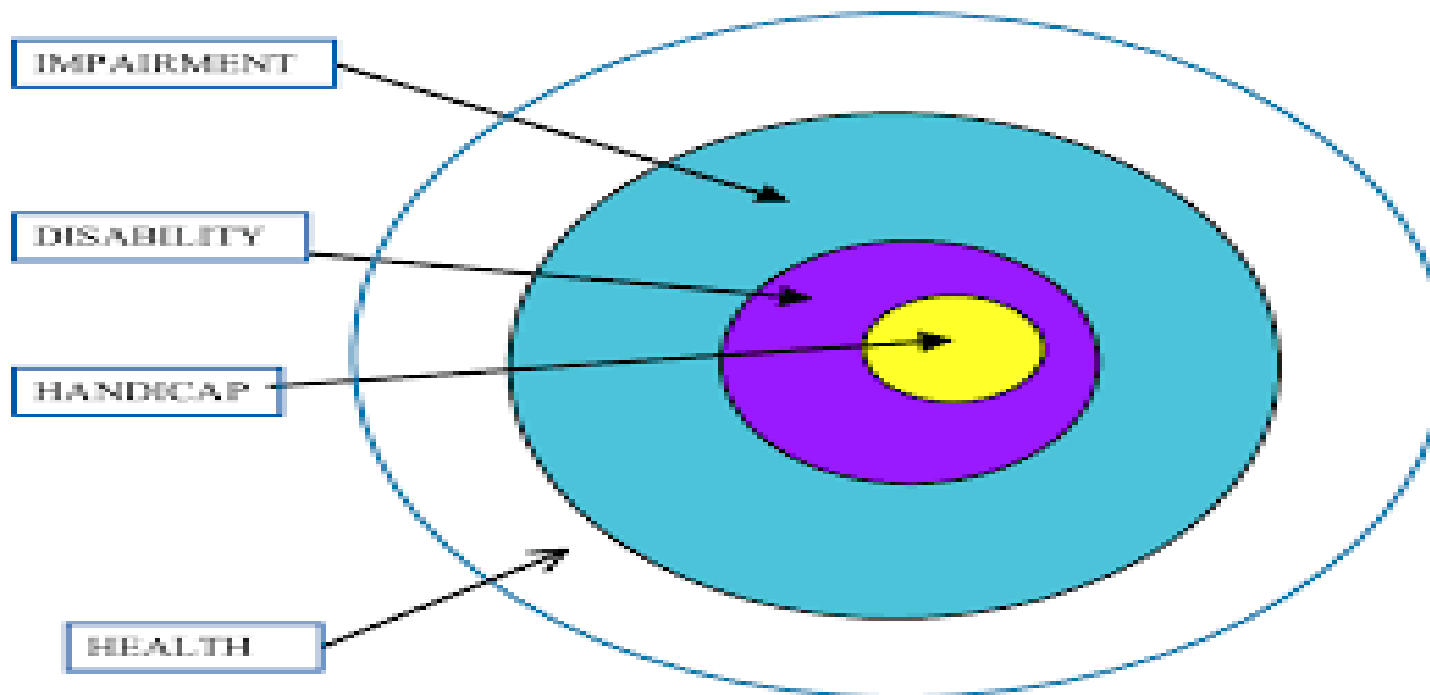
Early diagnosis and treatment:



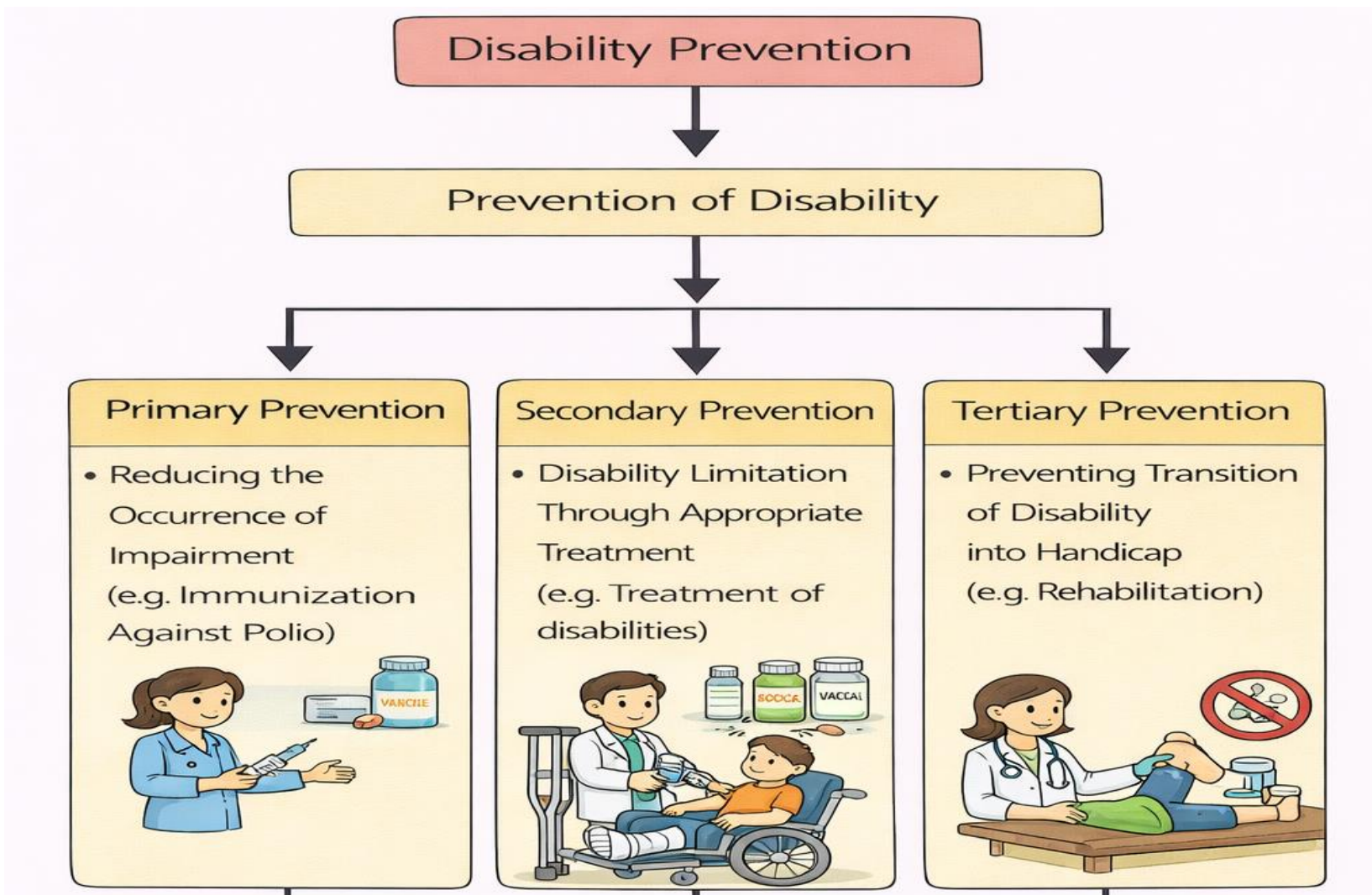
Disability limitation:

- Concept of disability

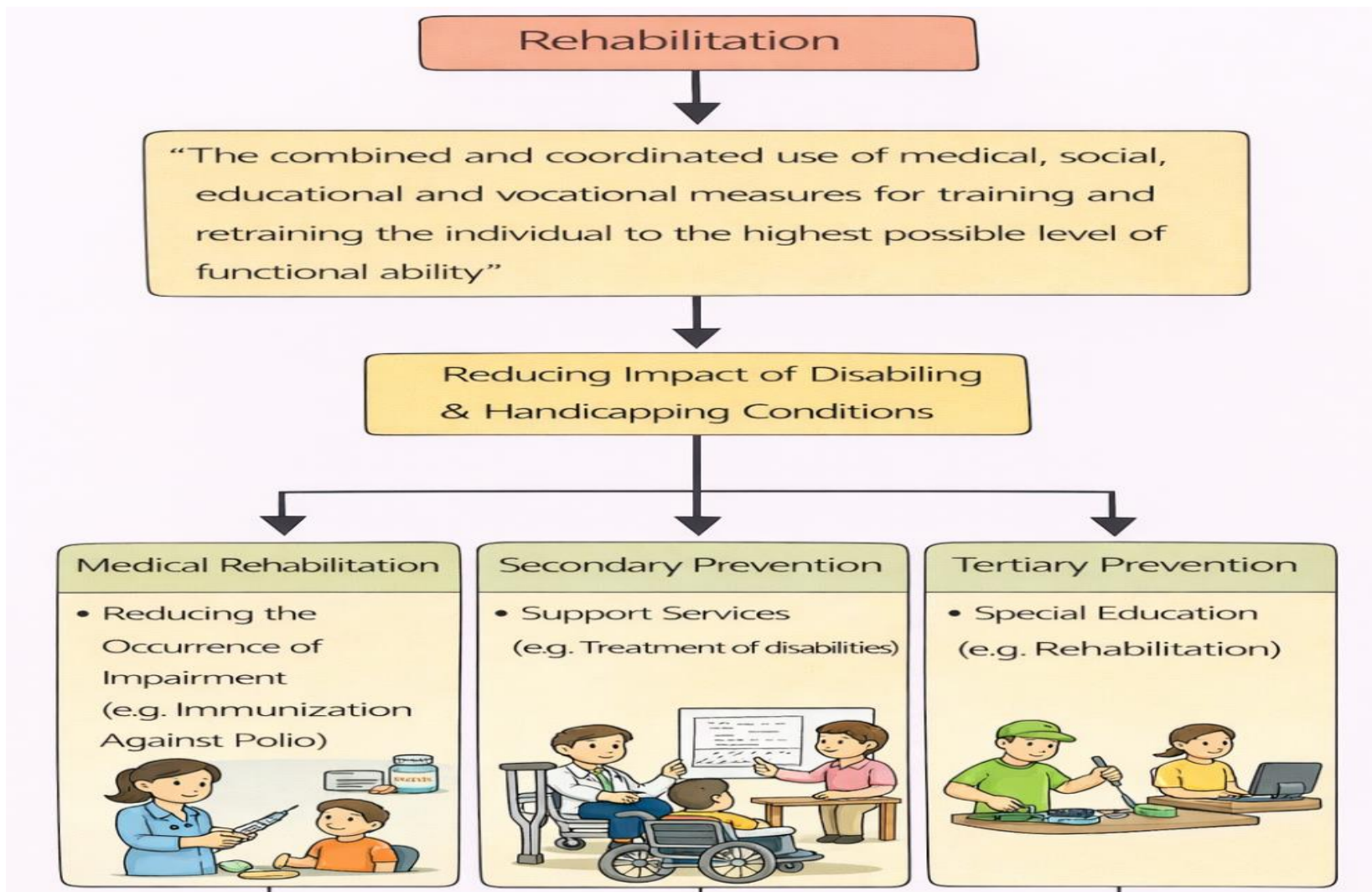
Disease → impairment → disability → handicap



Disability prevention:



Rehabilitation:



Multiple choice questions

1. The main objective of primary prevention is to:
 - A) Prevent complications
 - B) Prevent occurrence of disease
 - C) Limit disability
 - D) Restore health

2. Immunization against infectious diseases is an example of:
 - A) Primary prevention
 - B) Secondary prevention
 - C) Tertiary prevention
 - D) Quaternary prevention

Multiple choice questions

3. Screening tests are part of which level of prevention?

- A) Primary prevention
- B) Secondary prevention
- C) Tertiary prevention
- D) Primordial prevention

4. The goal of tertiary prevention is to:

- A) Promote health
- B) Prevent disease occurrence
- C) Prevent complications and restore function
- D) Detect disease early

Multiple choice questions

5. The concept of primordial prevention aims at:

- A) Preventing the emergence of risk factors
- B) Early detection of disease
- C) Reducing complications
- D) Preventing recurrence

6. Health education and lifestyle modification are examples of:

- A) Primary prevention
- B) Secondary prevention
- C) Tertiary prevention
- D) Quaternary prevention

Multiple choice questions

7. Rehabilitation services such as physiotherapy for post-stroke patients belong to:

- A) Primary prevention
- B) Secondary prevention
- C) Tertiary prevention
- D) Primordial prevention

8. Which of the following is the correct sequence of levels of prevention?

- A) Primary → Secondary → Tertiary
- B) Secondary → Primary → Tertiary
- C) Tertiary → Primary → Secondary
- D) Primary → Tertiary → Secondary

Multiple choice questions

9. Mode of intervention that aims to reduce risk factors in the population is called:

- A) Health promotion
- B) Specific protection
- C) Early diagnosis
- D) Disability limitation

10. The mode of intervention in secondary prevention is:

- A) Early diagnosis and treatment
- B) Health promotion
- C) Disability limitation
- D) Rehabilitation

Multiple choice questions with answers

1. B) Prevent occurrence of disease
2. A) Primary prevention
3. B) Secondary prevention
4. C) Prevent complications and restore function
5. A) Preventing the emergence of risk factors
6. A) Primary prevention
7. C) Tertiary prevention
8. A) Primary → Secondary → Tertiary
9. A) Health promotion
10. A) Early diagnosis and treatment

SUMMARY

Summary of Levels of Prevention of Disease

Primordial Prevention

Prevention of Risk Factor Emergence

Primary Prevention

Prevention of Disease Onset

Medical Rehabilitation

- Prevention of Risk Factor Emergence



Secondary Prevention

- Early Detection & Treatment of Disease



Tertiary Prevention

- Limiting Disability & Impairment



THANK YOU