

# **SNS COLLEGE OF PHYSIOTHERAPY**

Saravanampatti Post, Coimbatore – 641 035, T.N  
(Affiliated by the Tamil Nadu Dr. M. G. R. Medical University, Chennai.)



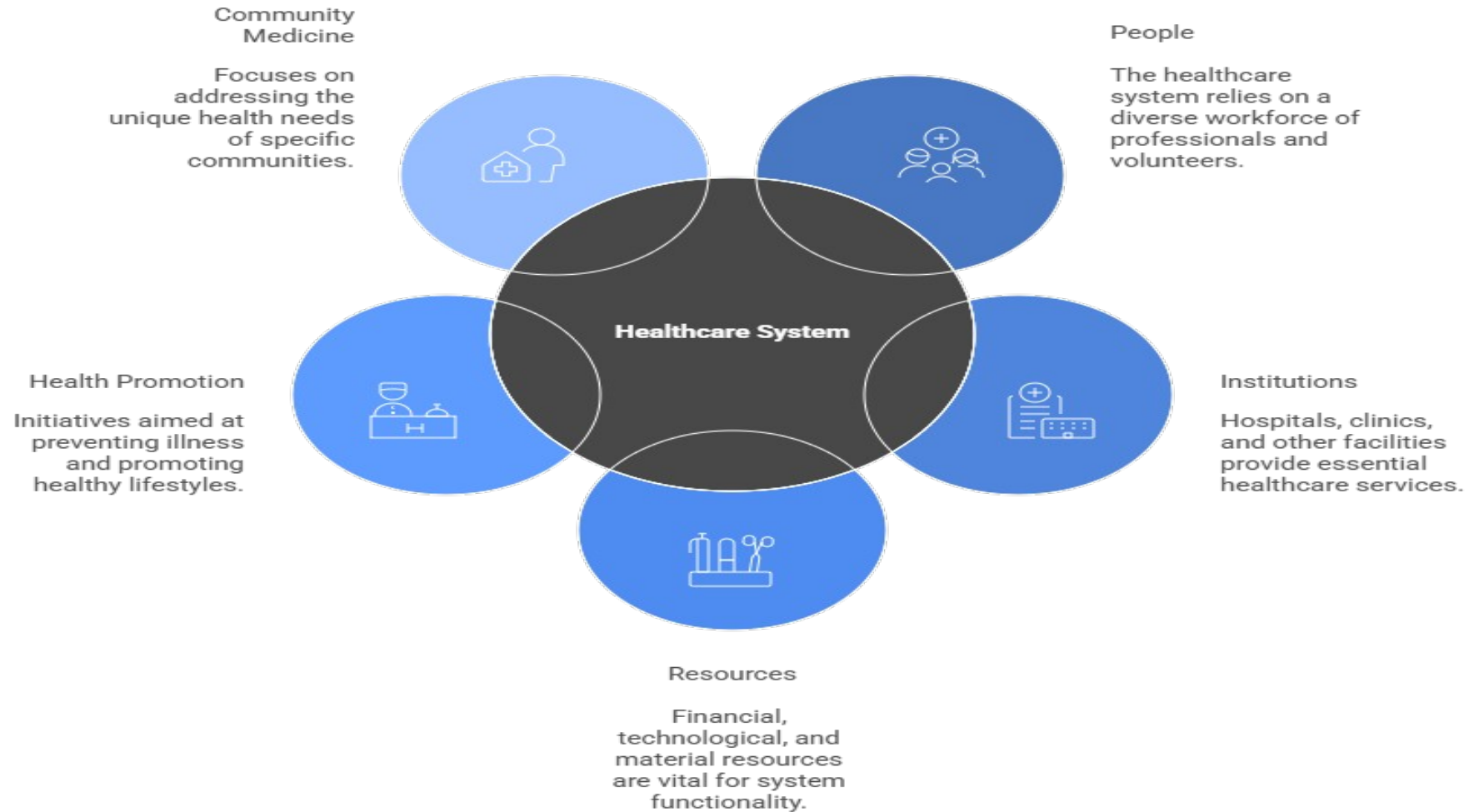
**DEPARTMENT OF PHYSIOTHERAPY- BPT III YEAR**

**SUBJECT NAME- COMMUNITY MEDICINE**

**TOPIC- HEALTH CARE SYSTEM**

**PREPARED BY- Dr. K. P. BENOSEL PAUL., PT,  
ASSISTANT PROFESSOR,  
SNSCOPT.**

# HEALTH CARE SERVICES:

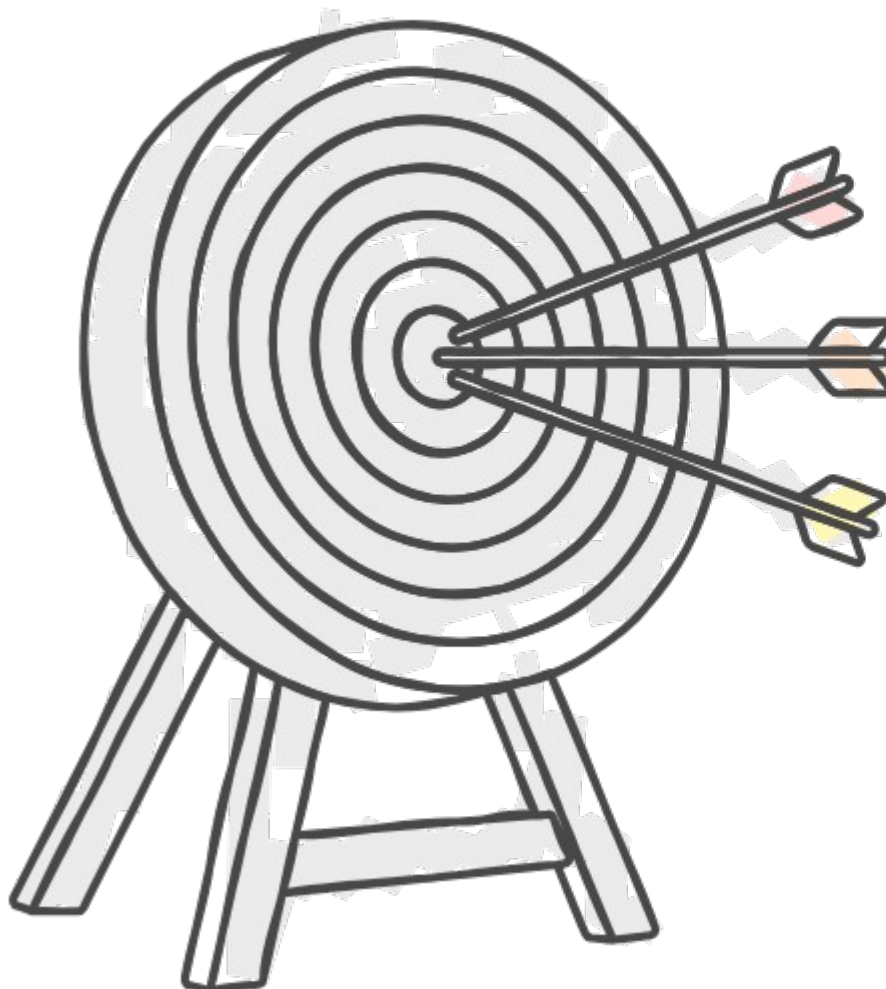


Made with  Napkin

# Components of a Healthcare System:



# Levels of Healthcare Delivery:



## Tertiary Healthcare

Advanced care for complex conditions



## Secondary Healthcare

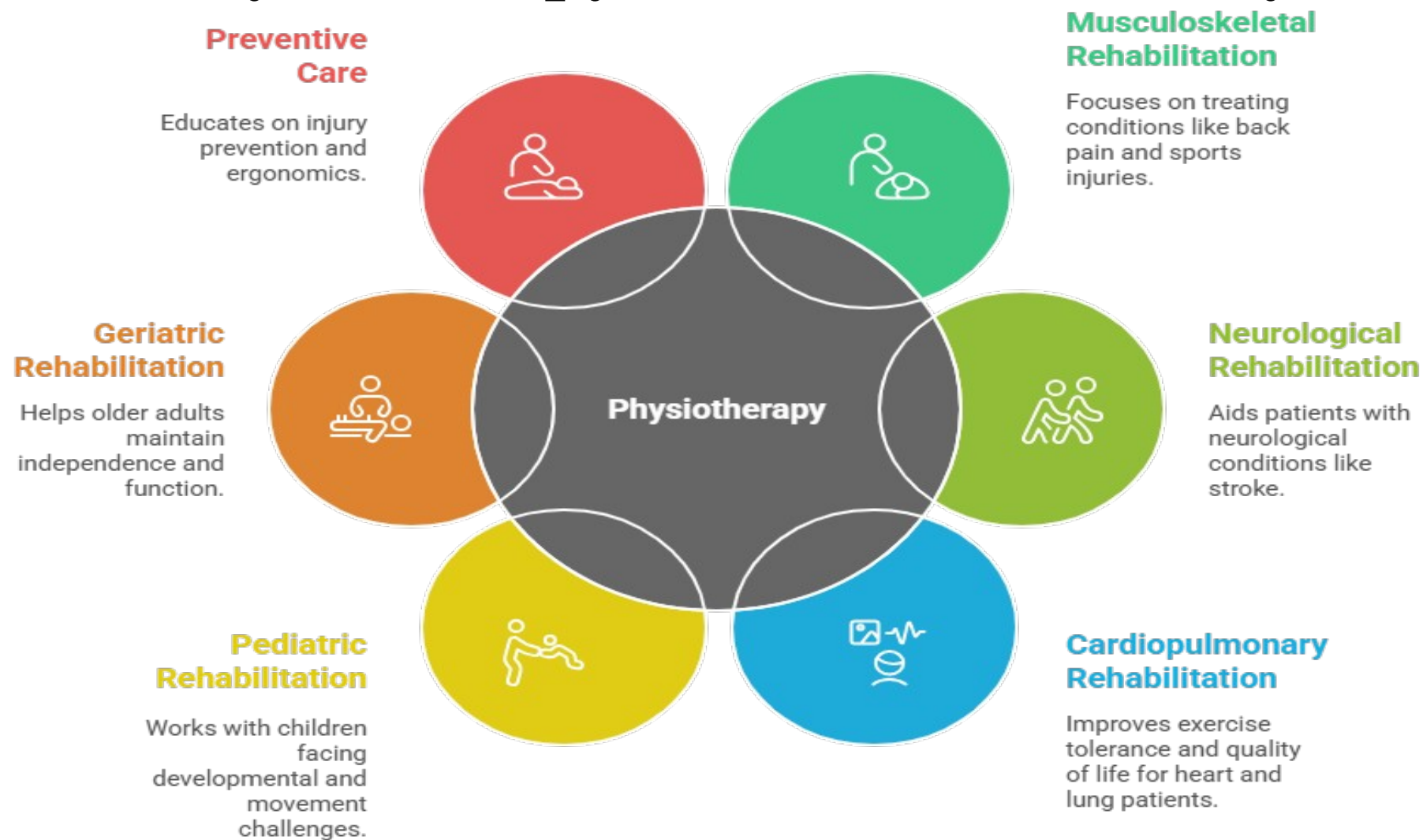
Specialized care referred by primary providers



## Primary Healthcare

First point of contact for basic services

# Role of Physiotherapy in the Healthcare System



# Challenges in the Healthcare System:

## Workforce Shortages

Addressing shortages of healthcare professionals in underserved areas.

## Access to Care

Ensuring equitable access to affordable and quality healthcare for all.

## Aging Population

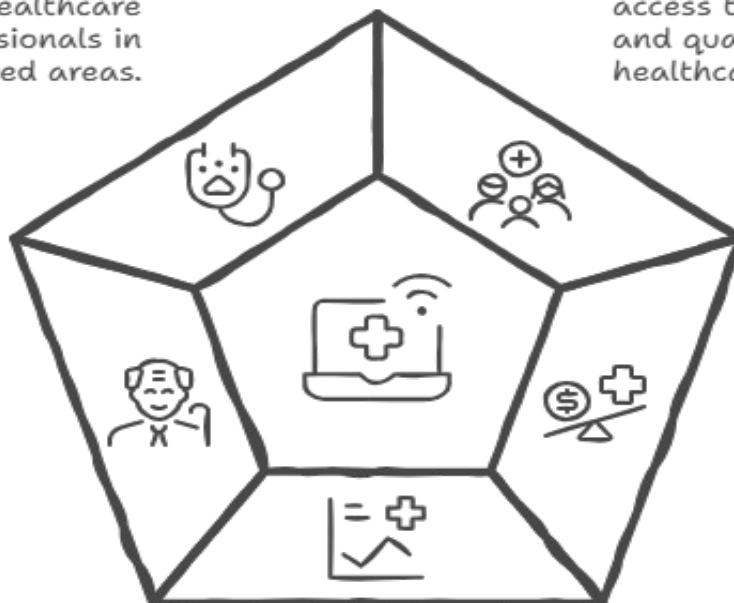
Meeting the healthcare needs of an aging population with chronic diseases.

## Healthcare Costs

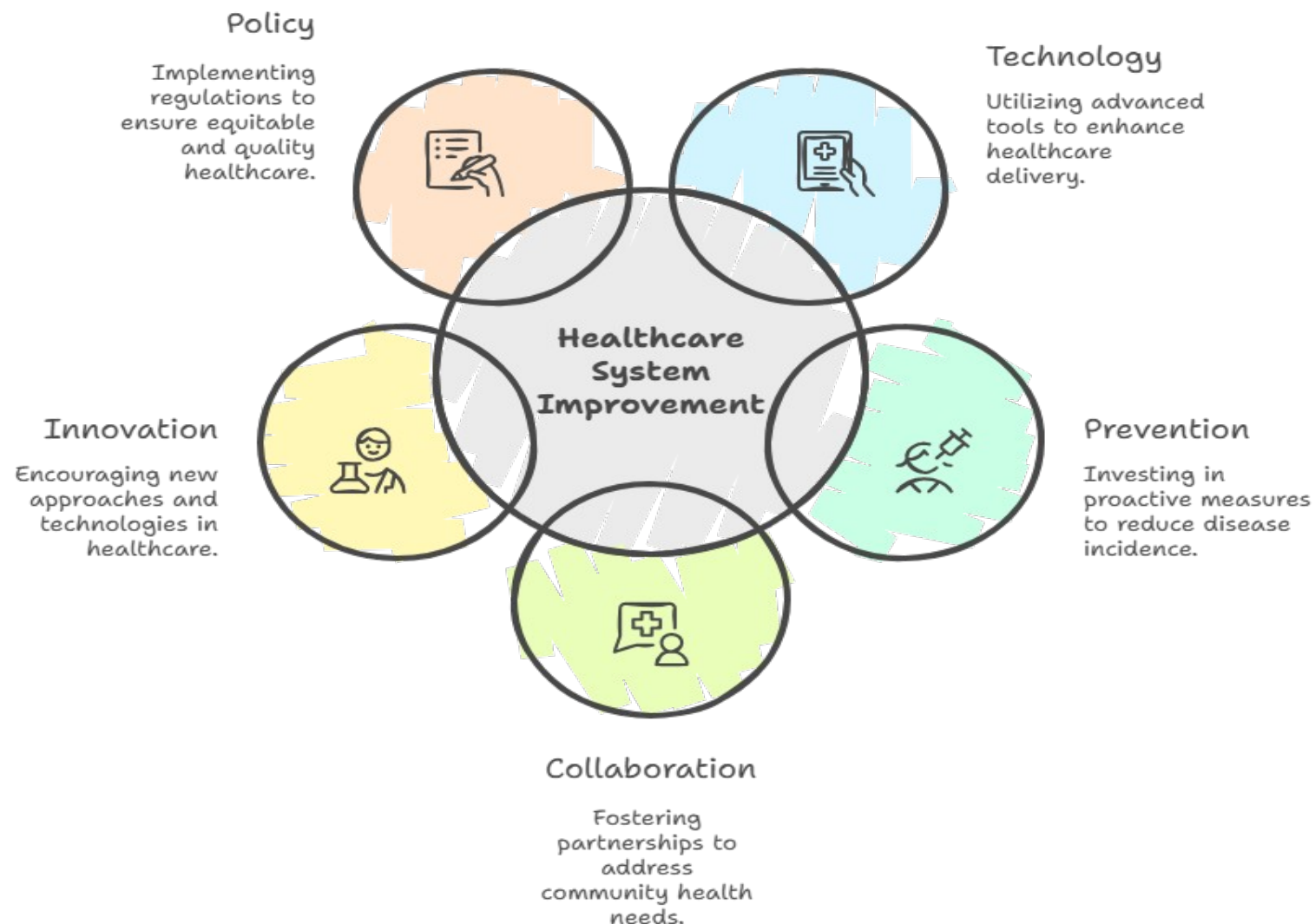
Managing rising healthcare costs while maintaining quality and access.

## Health Disparities

Addressing health outcome disparities among different population groups.



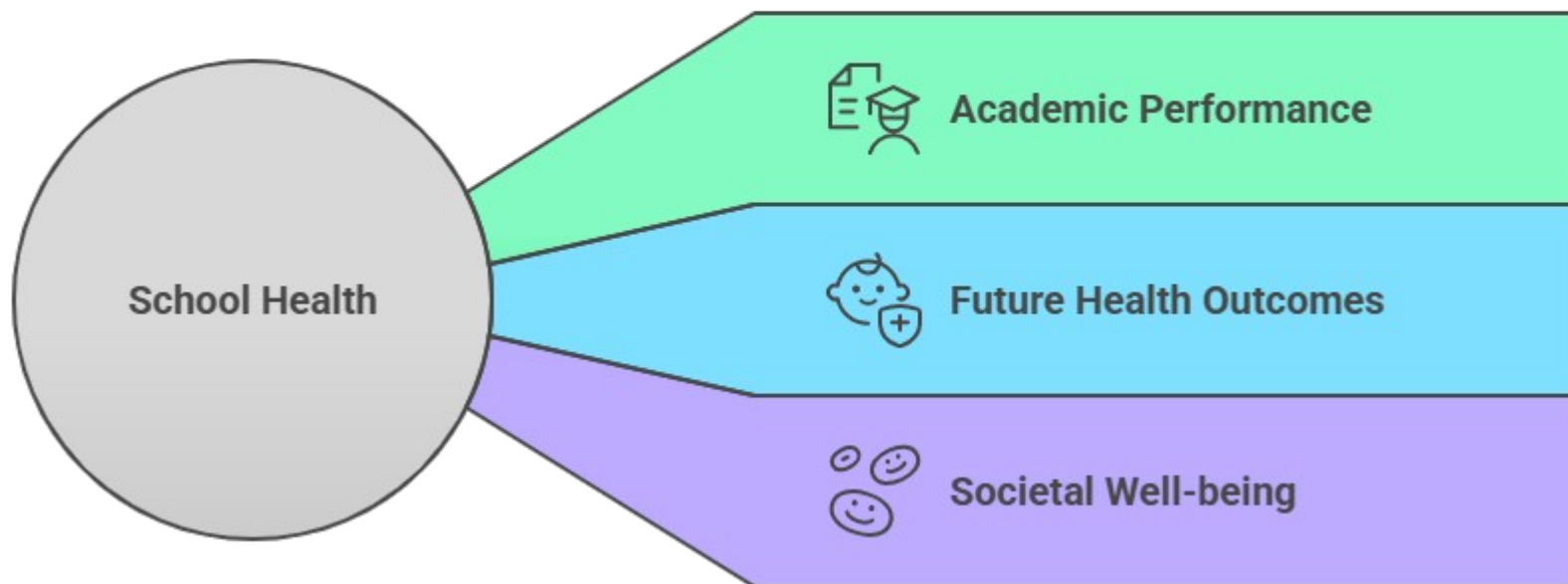
# Opportunities in the Healthcare System:



# SCHOOL HEALTH CARE SYSTEM

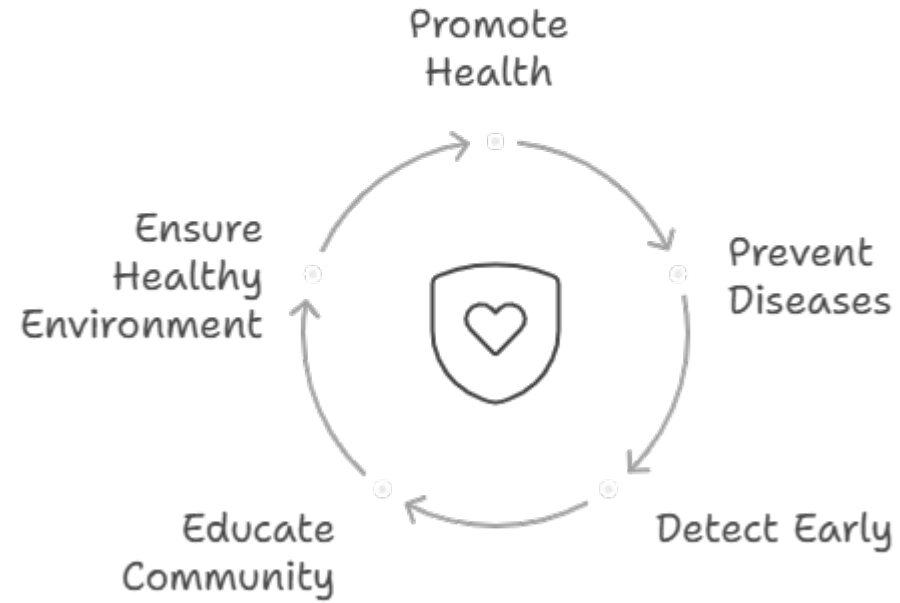
# School health services:

## Unveiling the Multifaceted Impact of School Health

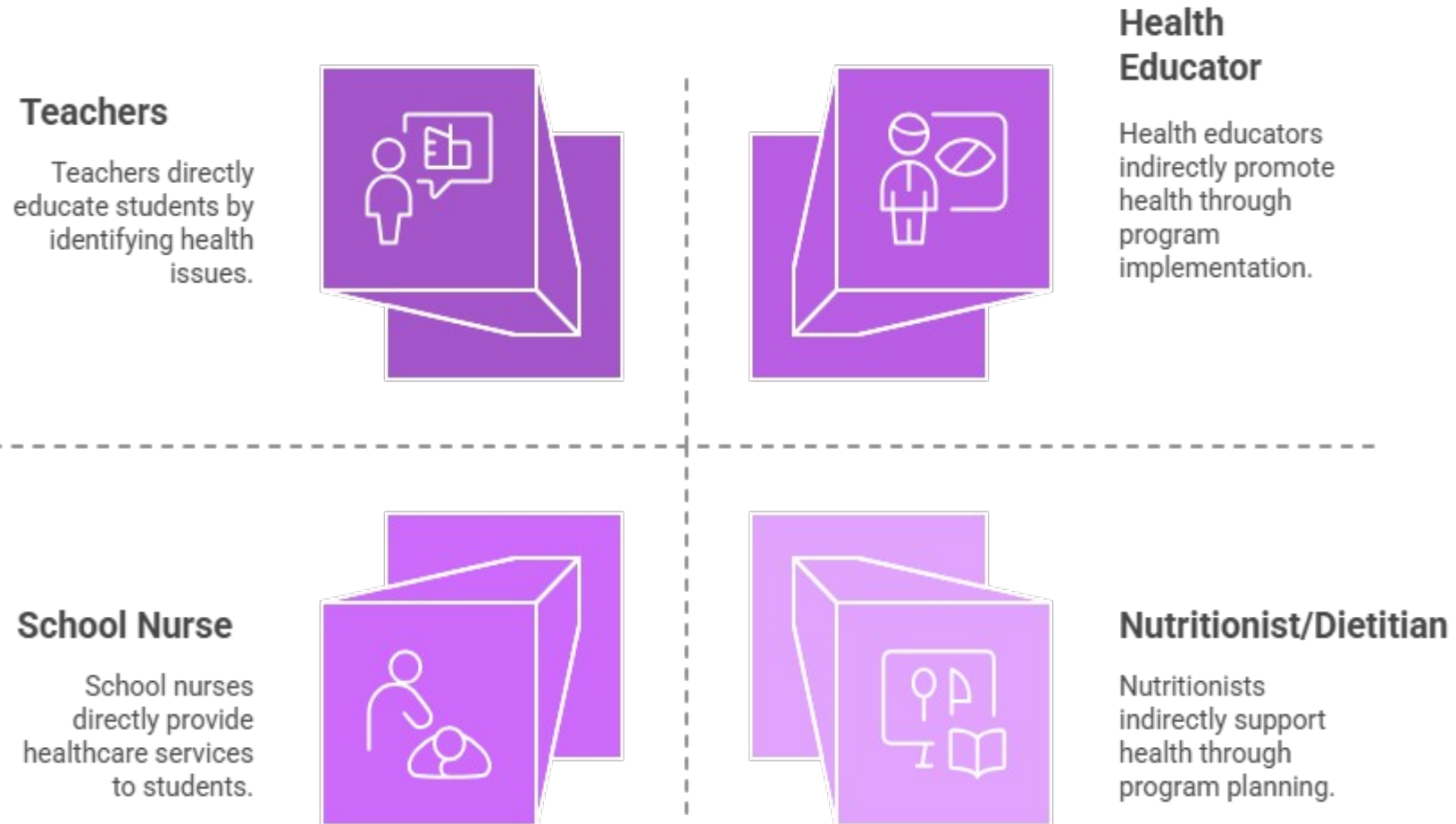


Made with  Napkin

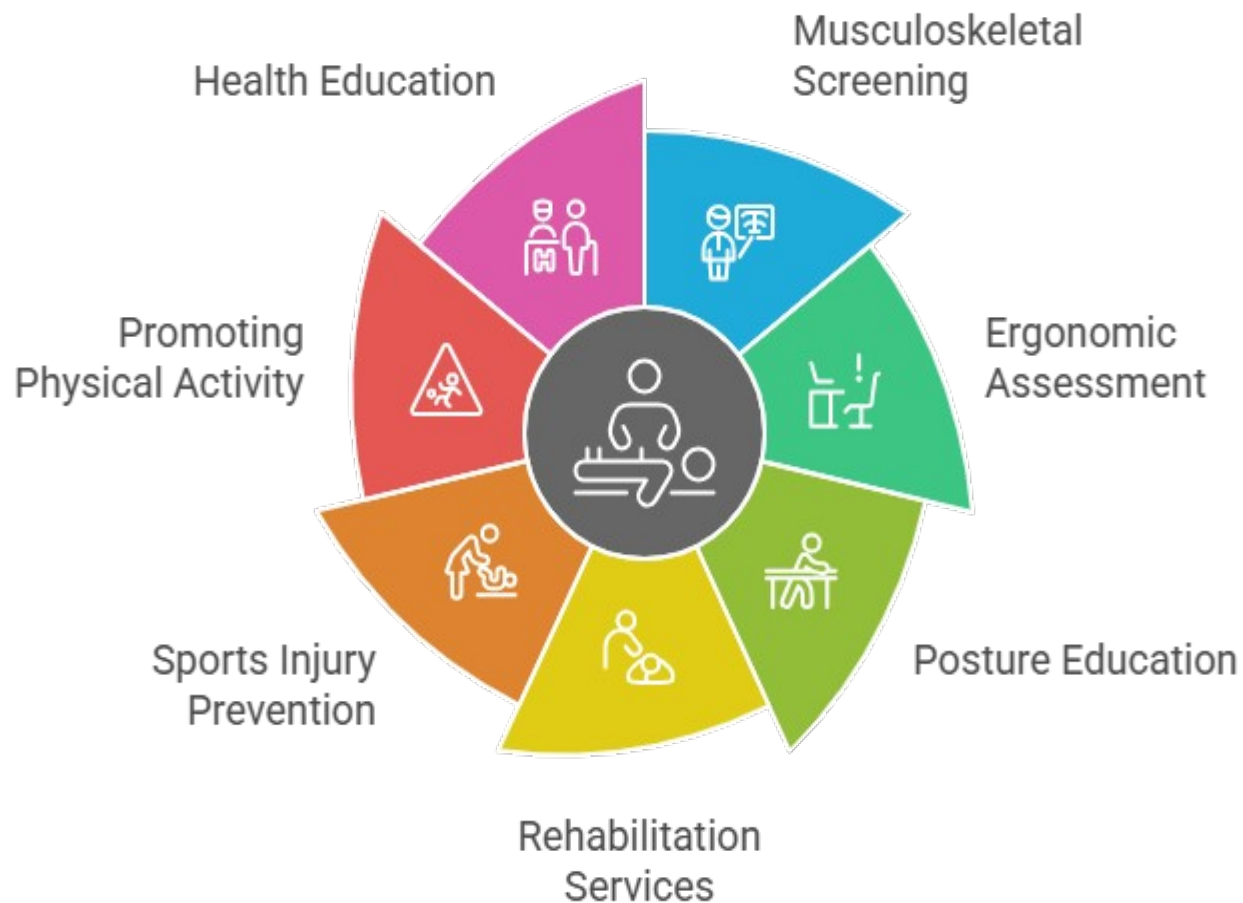
# Objectives of School Health Program:



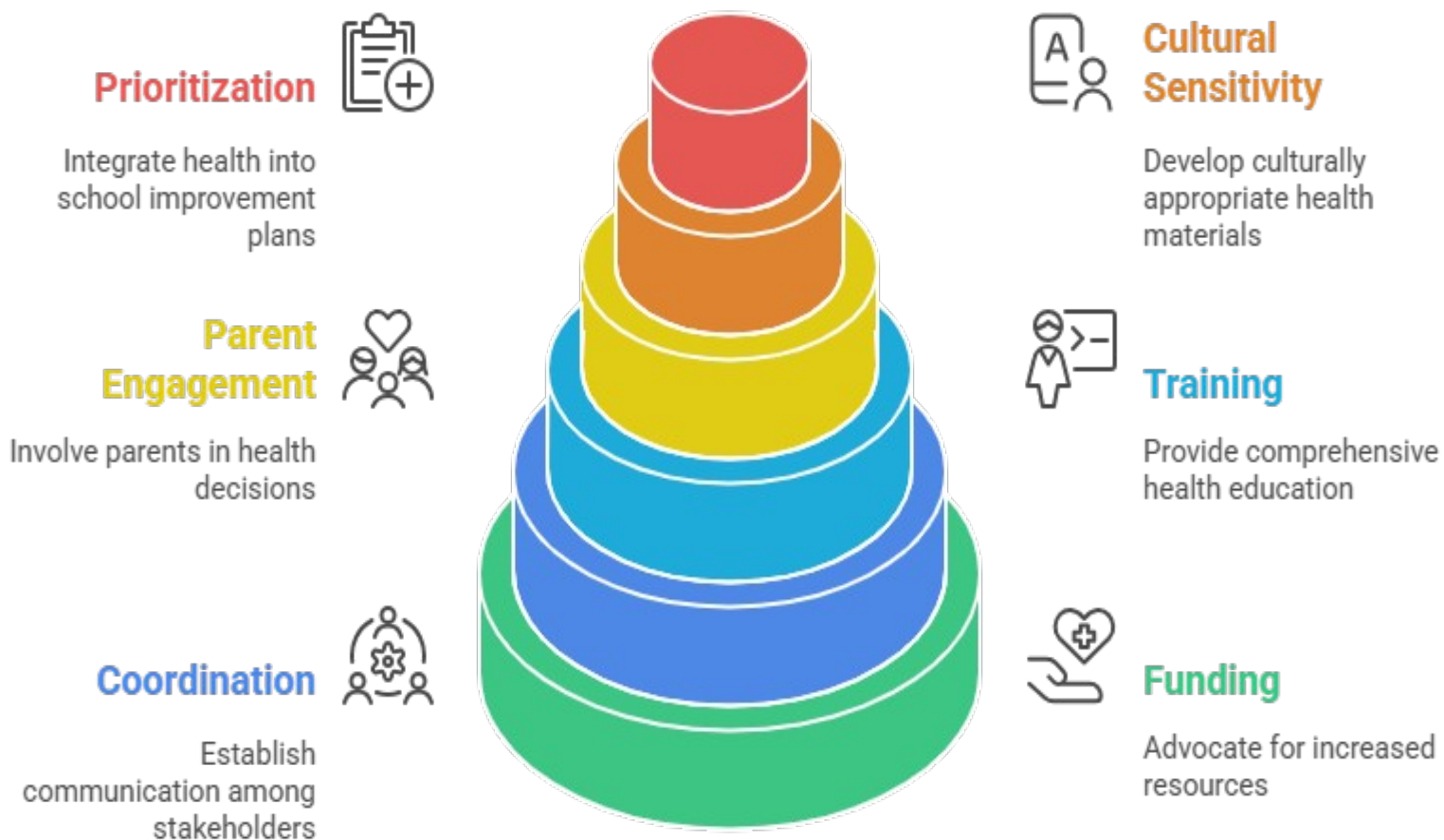
# Personnel Involved in School Health Program:



# Role of Physiotherapists in School Health:



# Strategies to Improve School Health Programs:



# Multiple Choice Questions:

1. Which of the following is the first contact level between the community and the health system in India?
  - A) District Hospital
  - B) Sub-Centre
  - C) Community Health Centre (CHC)
  - D) Medical College Hospital
  
2. The primary health care approach was officially adopted in India after which international declaration?
  - A) Ottawa Charter, 1986
  - B) Alma-Ata Declaration, 1978
  - C) Bhore Committee Report, 1946
  - D) National Health Policy, 2002

# Multiple Choice Questions:

3. The main objective of the School Health Programme is:

- A) To provide curative services for all diseases
- B) To detect and prevent health problems among school children
- C) To conduct vaccination only
- D) To collect data for research purposes

4. The Mid-day Meal Programme under the School Health Services primarily aims to:

- A) Improve attendance in schools
- B) Promote physical growth and nutritional status of children
- C) Provide employment to cooks
- D) Reduce dropout rates in high school

# Multiple Choice Questions:

5. Which of the following is an example of a voluntary health agency in India?

- A) Indian Red Cross Society
- B) Central Health Ministry
- C) State Health Directorate
- D) Primary Health Centre

6. The main role of voluntary health agencies in community health is to:

- A) Frame government health policies
- B) Provide support and supplement government health programs
- C) Replace the government health system
- D) Collect taxes for health programs

# Multiple Choice Questions with answer:

1. B) Sub-Centre
2. B) Alma-Ata Declaration, 1978
3. B) To detect and prevent health problems among school children
4. B) Promote physical growth and nutritional status of children
5. A) Indian Red Cross Society
6. B) Provide support and supplement government health programs

# Summary:

## HEALTH CARE SYSTEM



### PRIMARY LEVEL

First contact care

- Sub-centre
- Primary Health Centre (PHC)
- Village Health Worker / ANM
- Preventive, promotive, curative and rehabiliy



### SECONDARY LEVEL

Specialized services

- District Hospital
- Community Health Centre (CHC)
- Taluk / Sub-District Hospital
- Curative & referral services



### TERTIARY LEVEL

Super-specialized care

- Medical Colleges
- AIIMS / Specialty Hospitals
- Advanced diagnostic, therapeutic, and rehabilitative care
- Teaching & research centers

## CLASSIFICATION OF HEALTH CARE SYSTEM

### PUBLIC SECTOR



- Central Govt.
- State Govt,
- Local bodies
- ESI, CGHS
- Defense



### PRIVATE SECTOR



- Private hospitals
- Clinics & nursing homes
- NGOs & Charitable organizations
- Traditional systems (AYUS)

# Thank you