

SNS COLLEGE OF PHYSIOTHERAPY

Saravanampatti Post, Coimbatore – 641 035, T.N
(Affiliated by the Tamil Nadu Dr. M. G. R. Medical University, Chennai.)



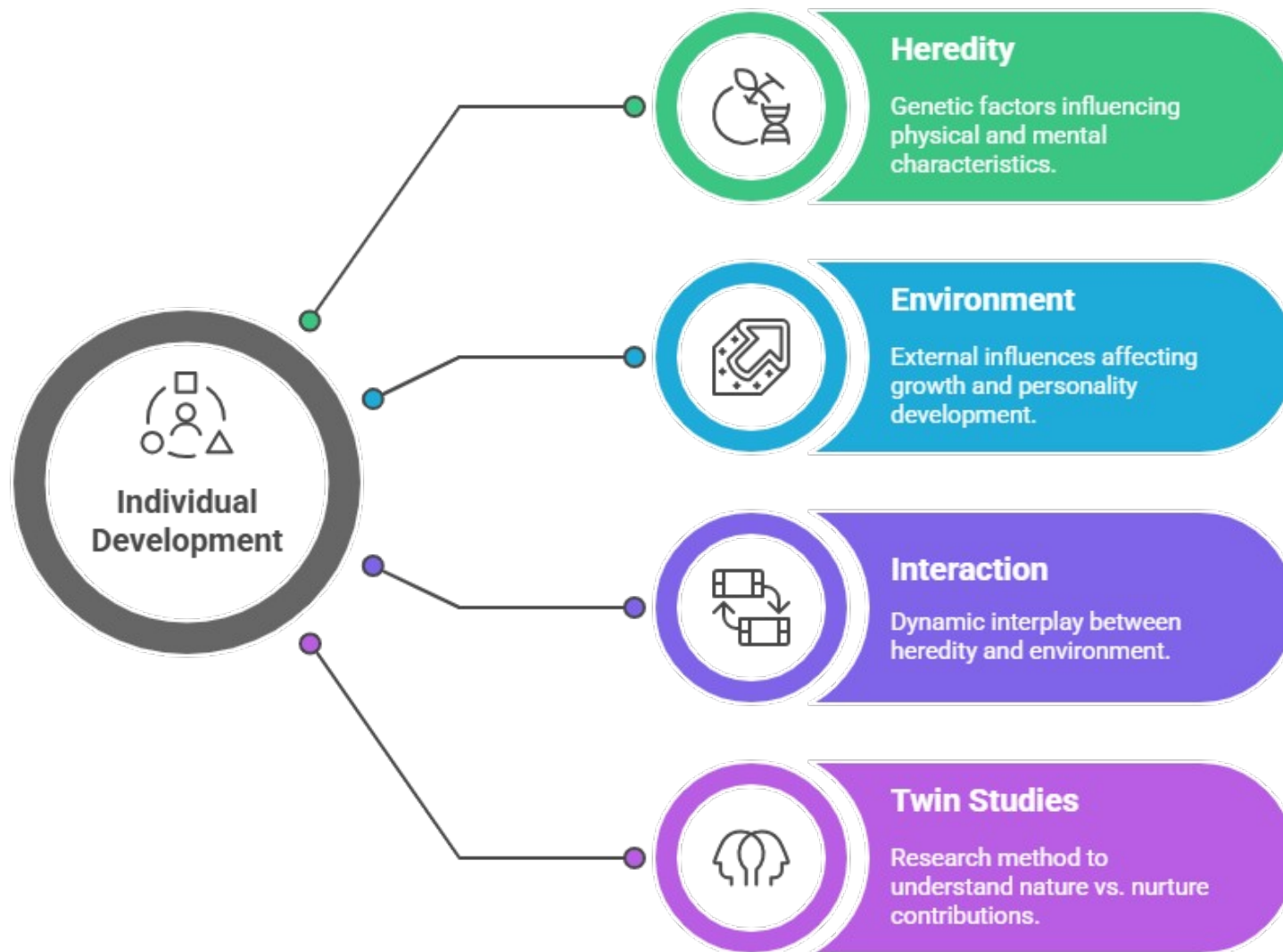
DEPARTMENT OF PHYSIOTHERAPY- BPT I YEAR

SUBJECT NAME- PSYCHOLOGY

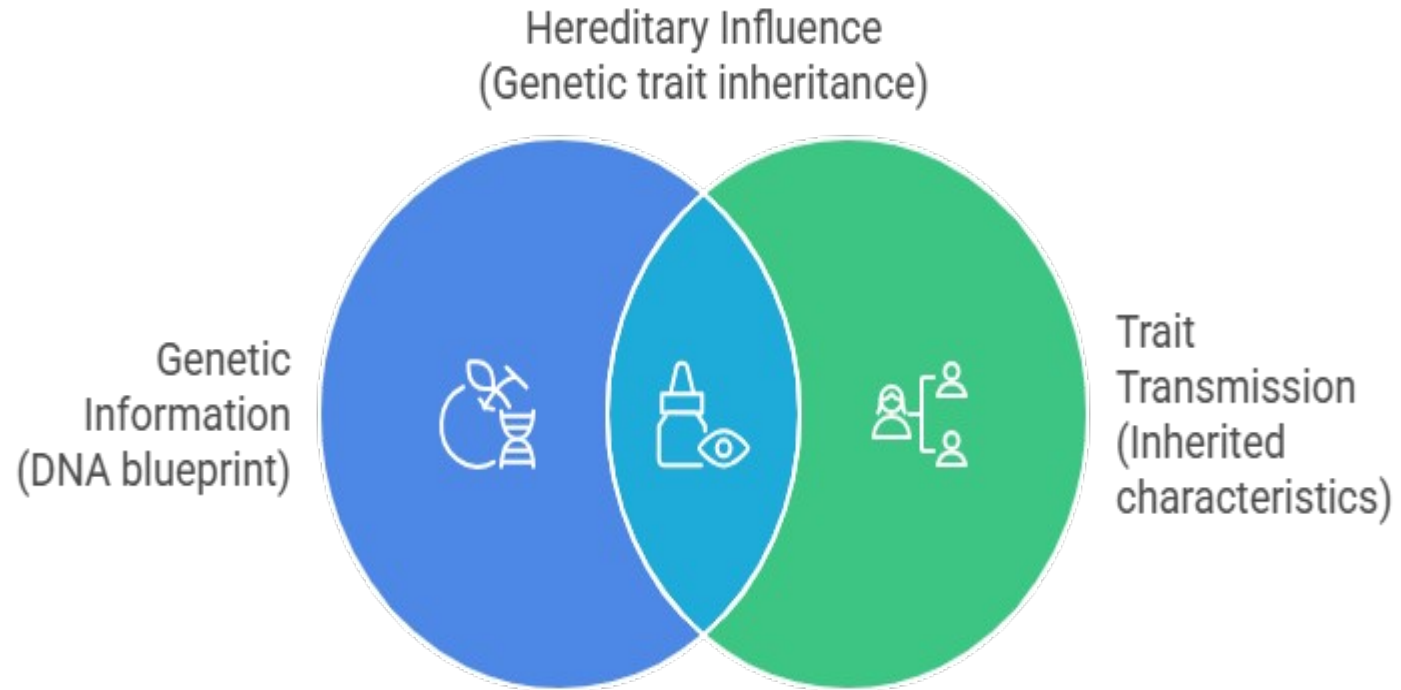
TOPIC- Heredity and Environment

**PREPARED BY- Dr. K. P. BENOSEL PAUL., PT,
ASSISTANT PROFESSOR,
SNSCOPT.**

INTRODUCTION:



Heredity:



Made with  Napkin

Role of Heredity:

Personality

Genes affect temperament and emotional reactivity.

Physical Characteristics

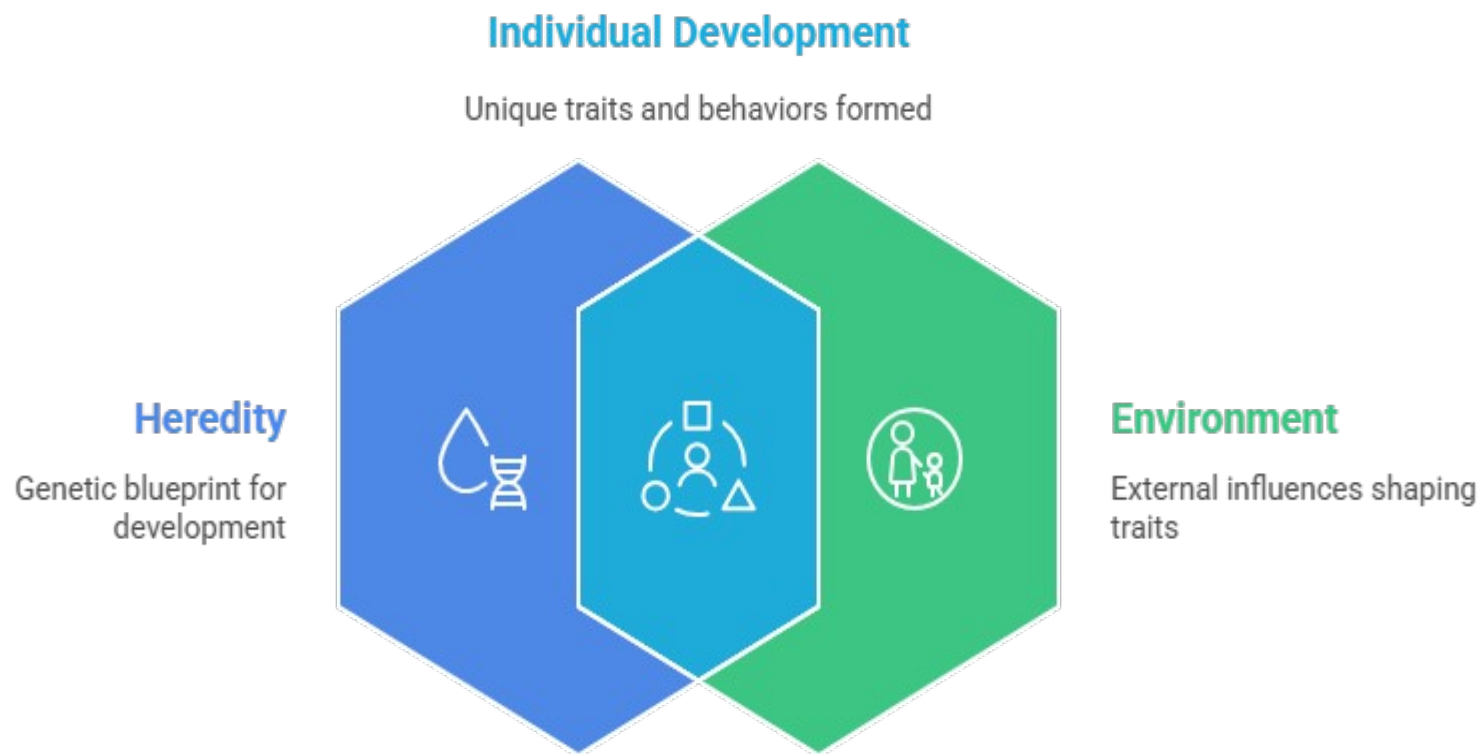
Genes determine height, eye color, and disease risk.



Intelligence

Genes set a range for intellectual potential.

Environment:



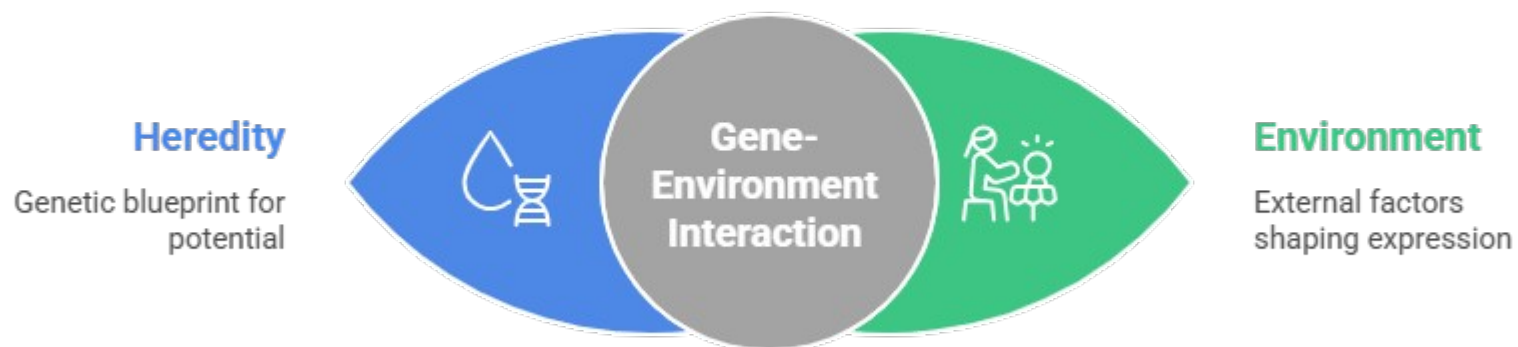
Made with  Napkin

Role of Environment:



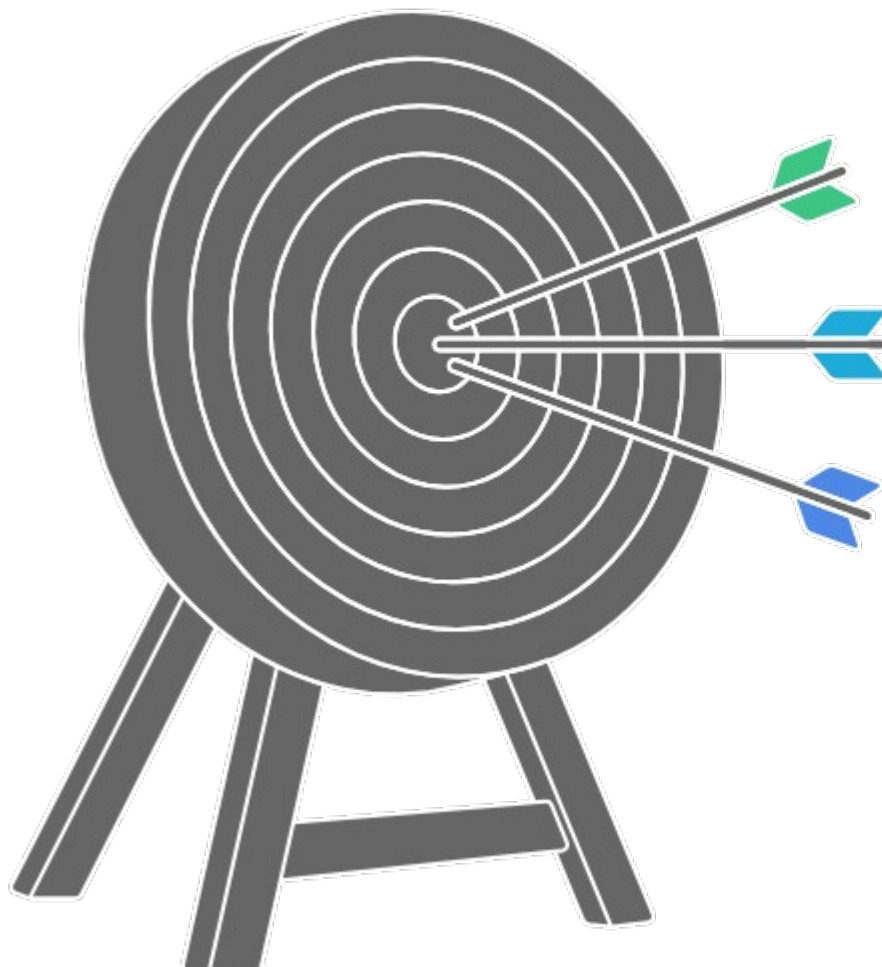
The Interplay of Heredity and Environment

The Dynamic Dance of Heredity and Environment



Made with  Napkin

Gene-Environment Interaction:



Active Gene-Environment Correlation

Individuals seek compatible environments



Evocative Gene-Environment Correlation

Genetic traits evoke environmental responses



Passive Gene-Environment Correlation

Inherited genes and environments from parents

Twins:

Heritability Estimation
Quantifies the genetic contribution to traits

Identical Twins

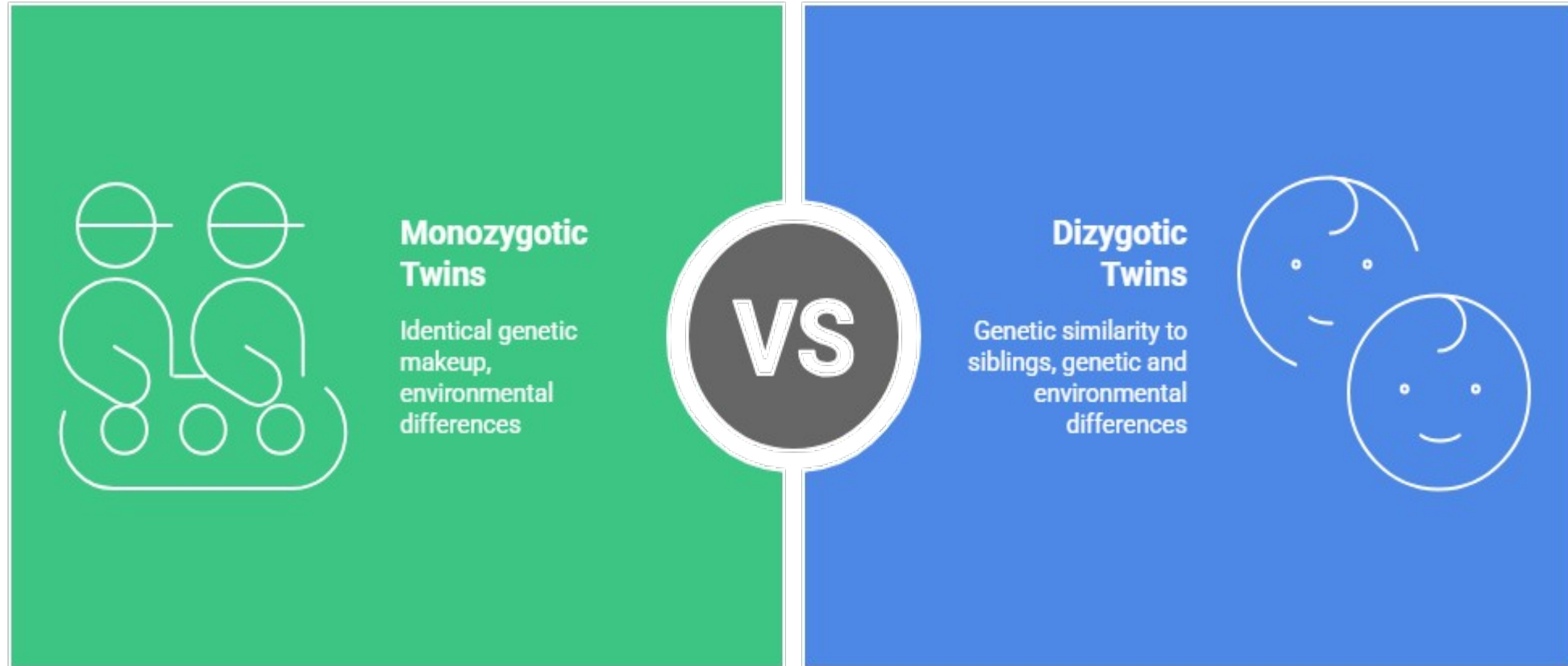
Share 100% of their genes, providing insights into environmental influences



Fraternal Twins

Share approximately 50% of their genes, highlighting genetic diversity

Types of Twins:

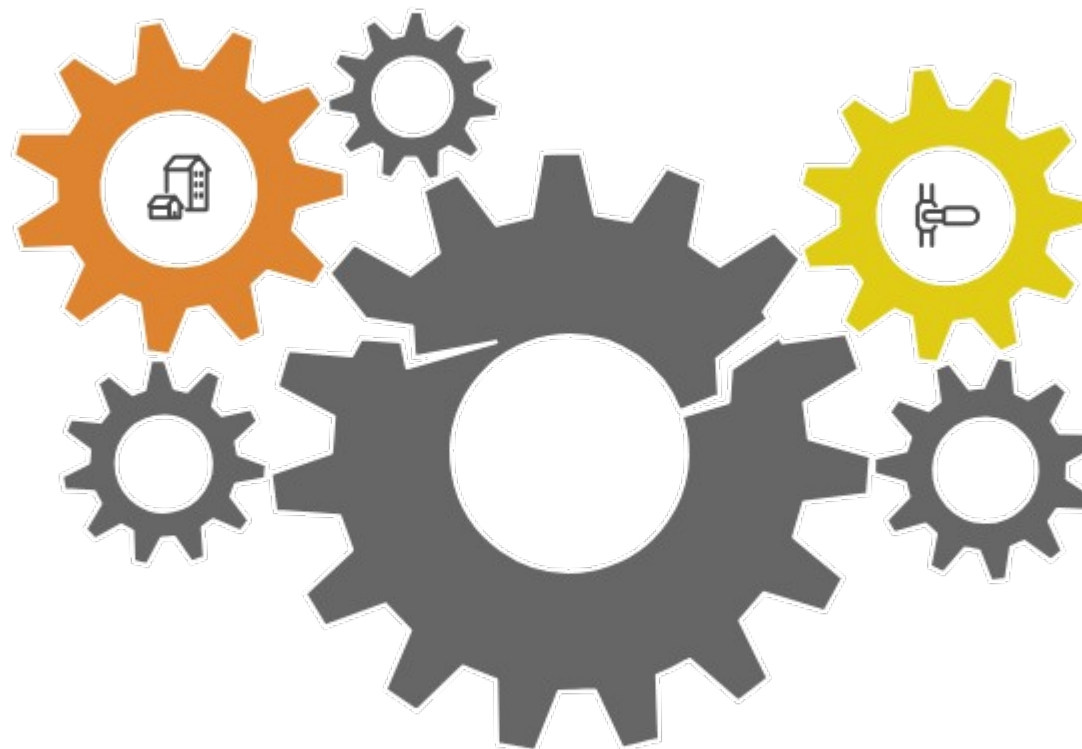


Made with  Napkin

Twin Studies:

Environmental Influence

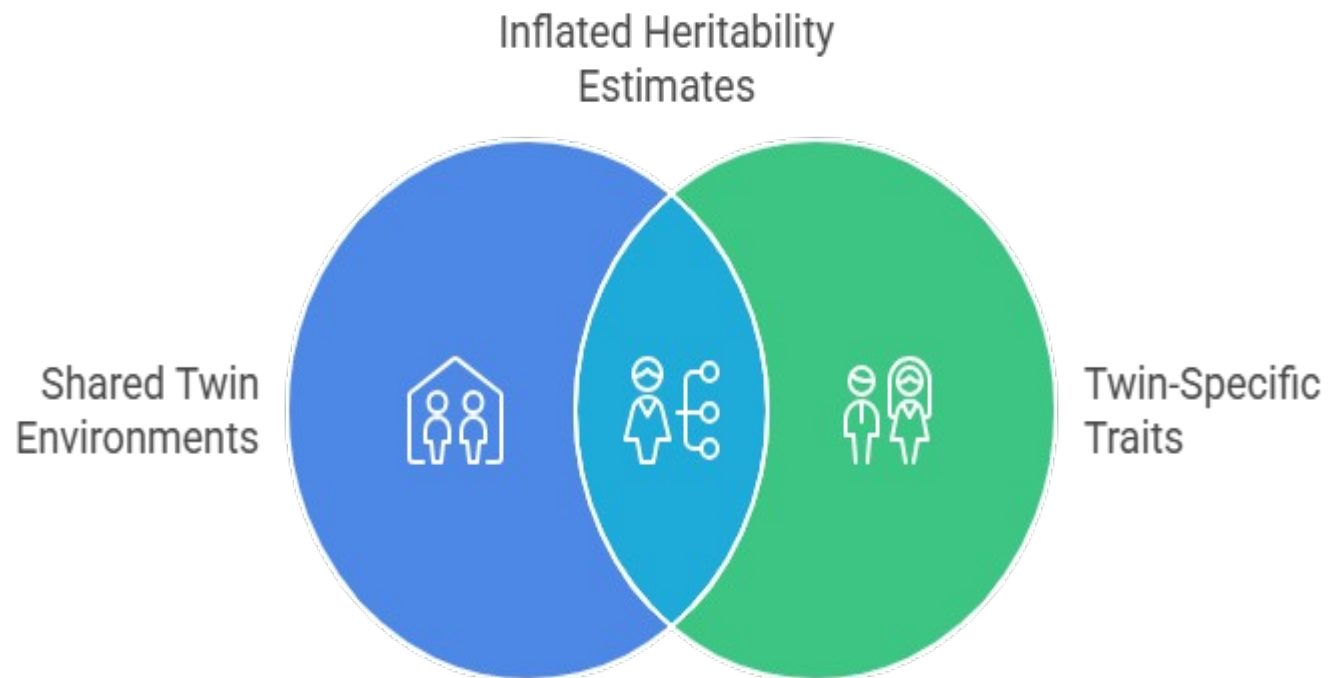
Similar environments affect both twin types



Genetic Influence

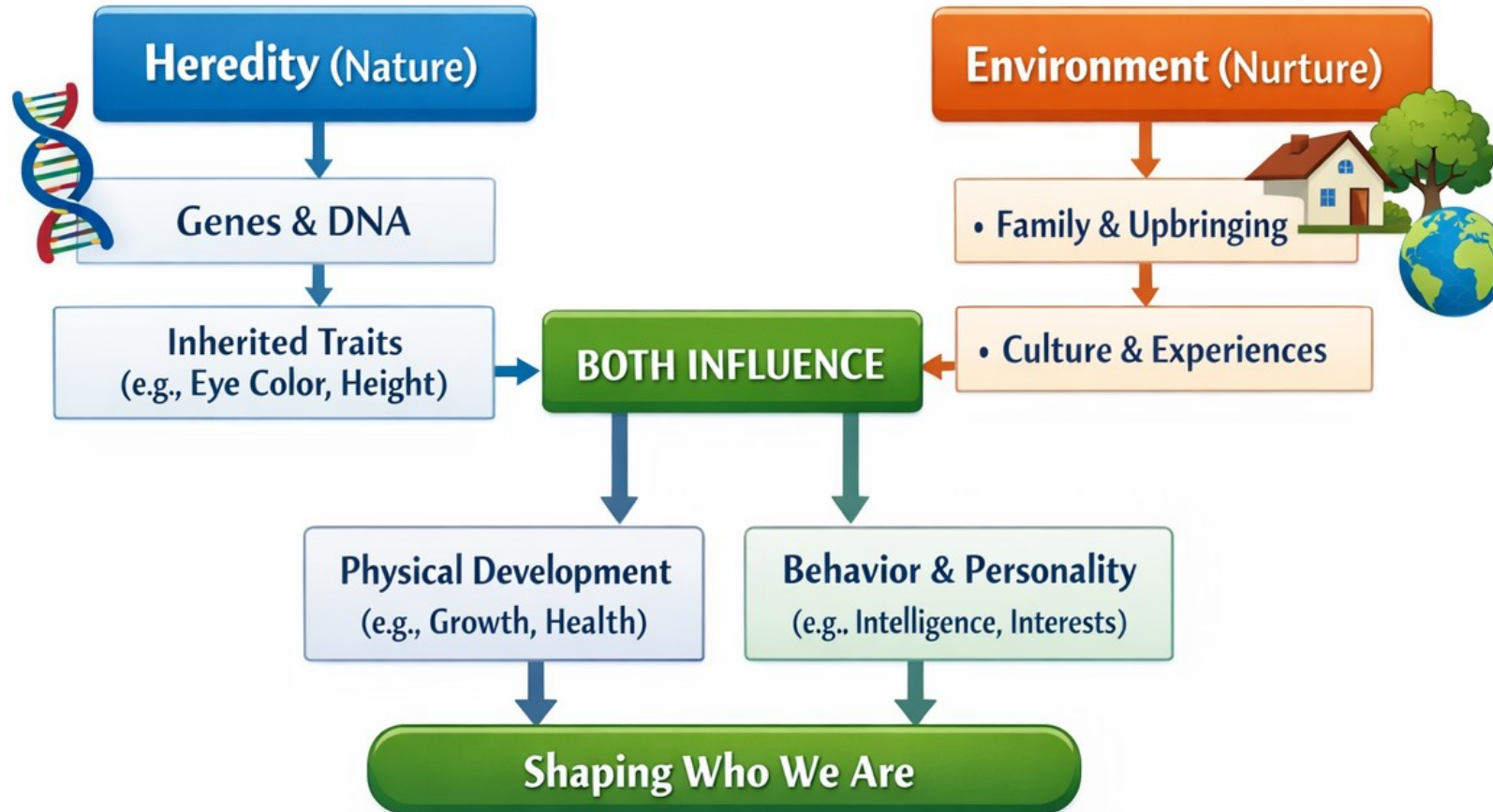
Identical twins share more genes

Limitations of Twin Studies:



Made with  Napkin

SUMMARY



THANK YOU