

SNS COLLEGE OF PHYSIOTHERAPY

Saravanampatti Post, Coimbatore – 641 035, T.N
(Affiliated by the Tamil Nadu Dr. M. G. R. Medical University, Chennai.)



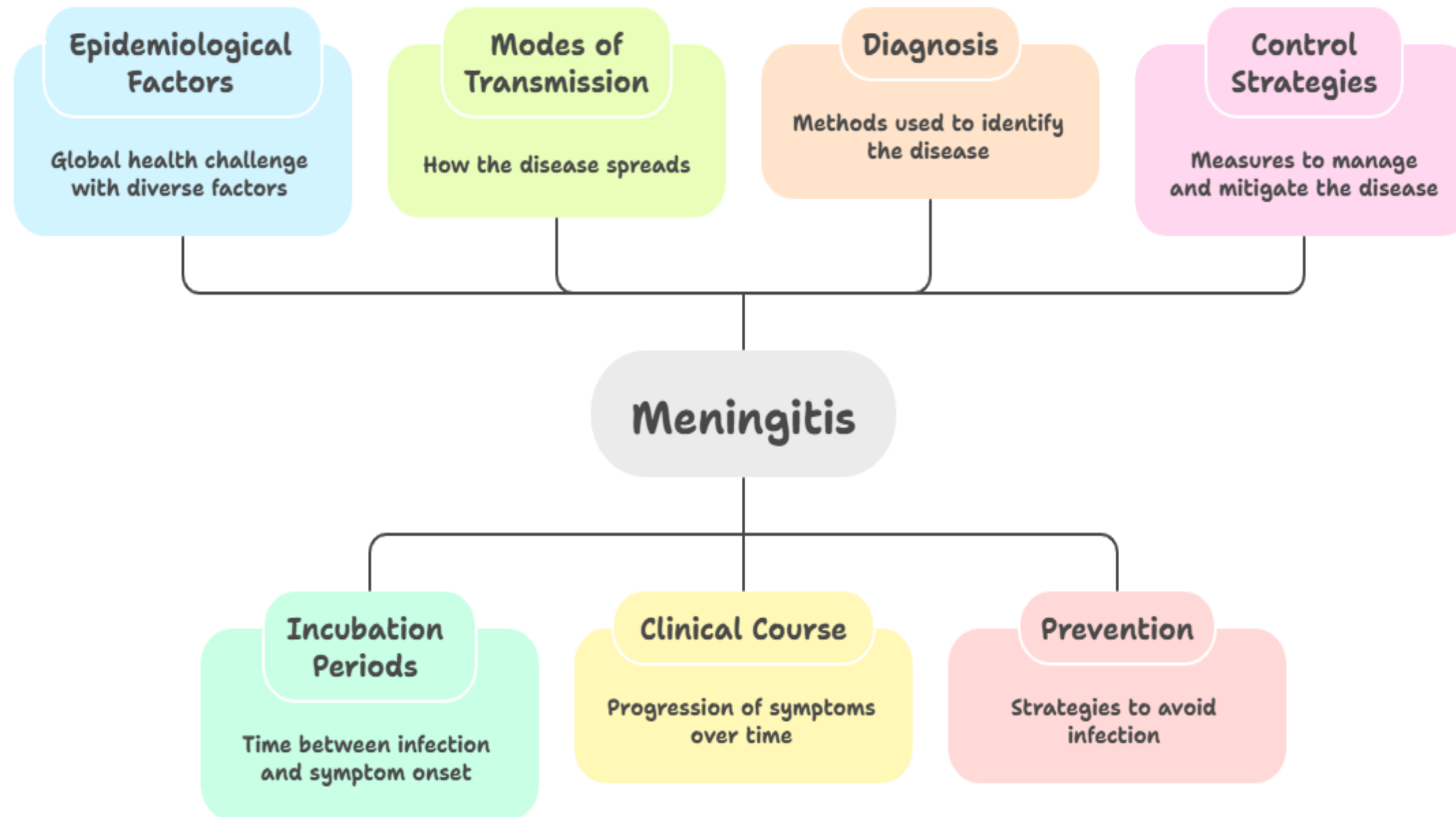
DEPARTMENT OF PHYSIOTHERAPY- BPT III YEAR

SUBJECT NAME- COMMUNITY MEDICINE

TOPIC- MENINGITIS

**PREPARED BY- Dr. K. P. BENOSEL PAUL., PT,
ASSISTANT PROFESSOR,
SNSCOPT.**

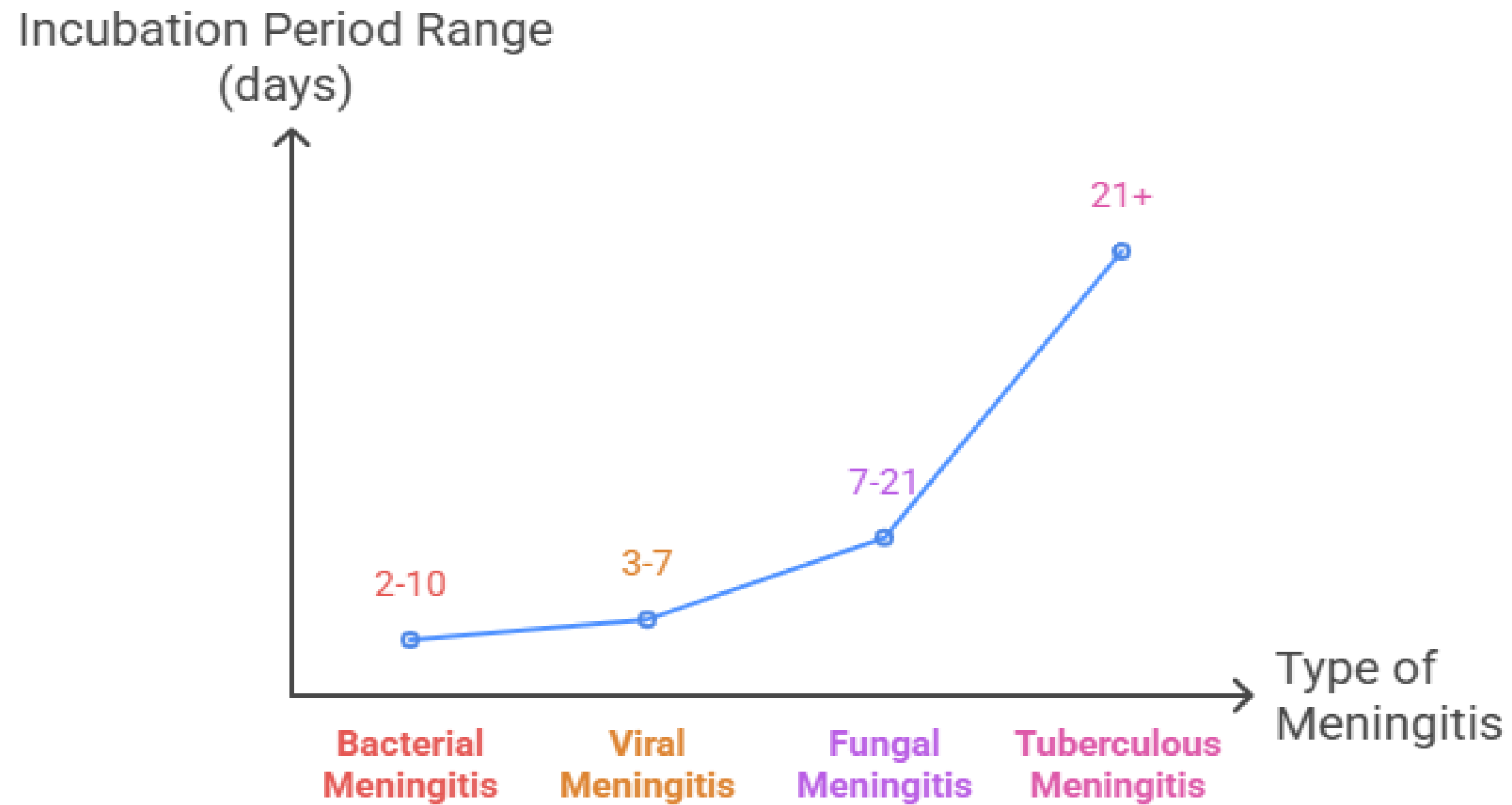
Introduction:



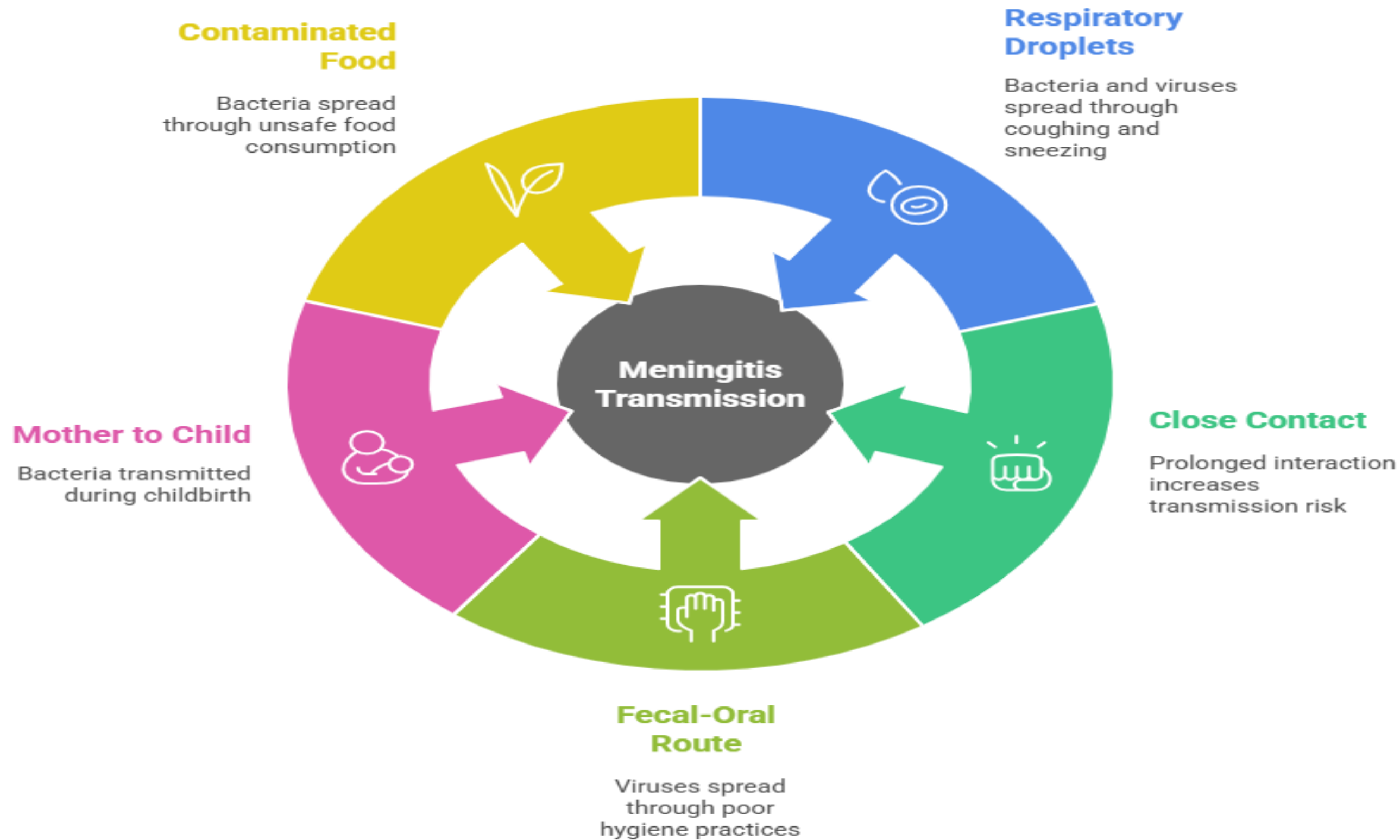
Epidemiological Features:



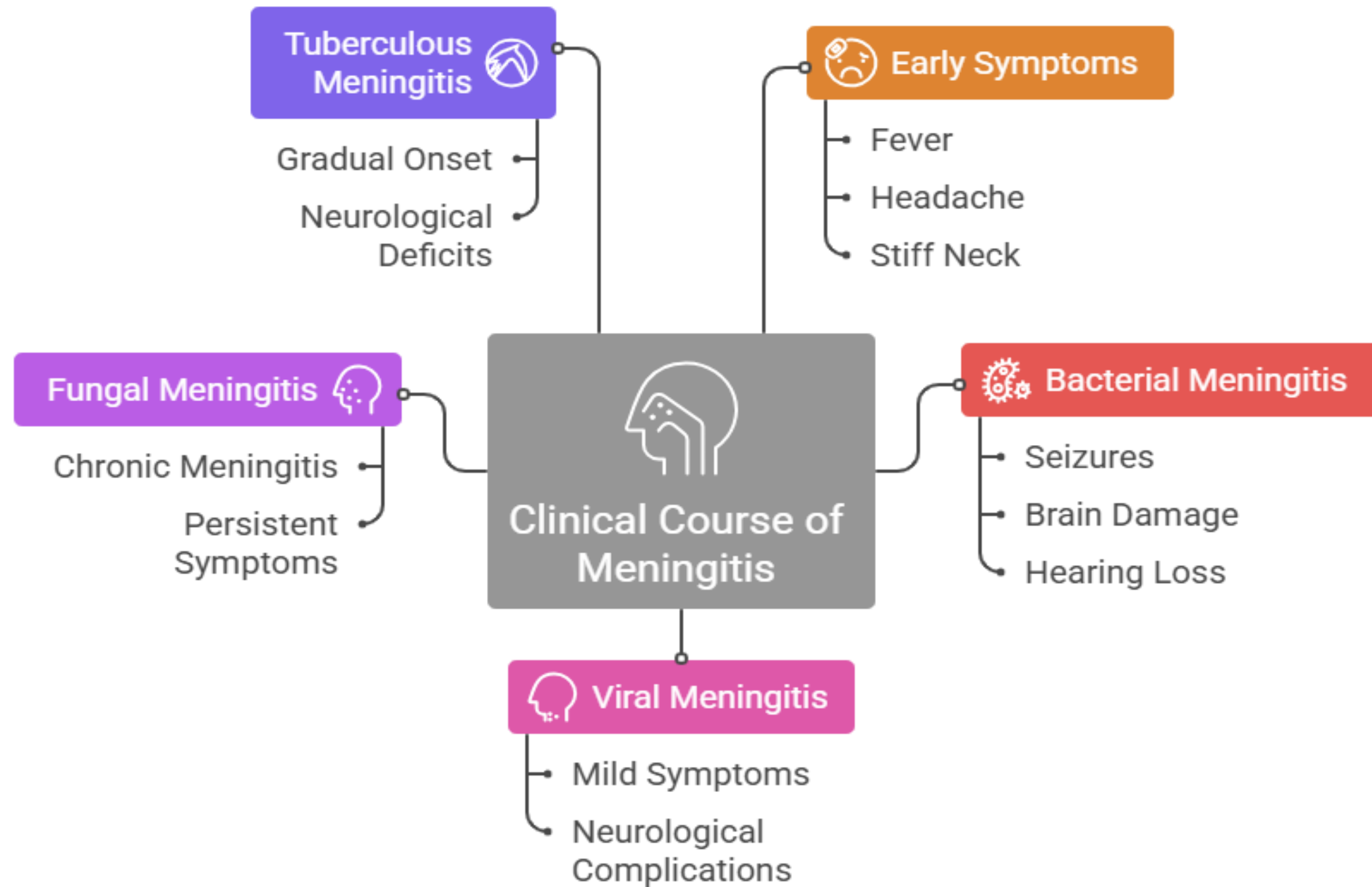
Incubation Periods:



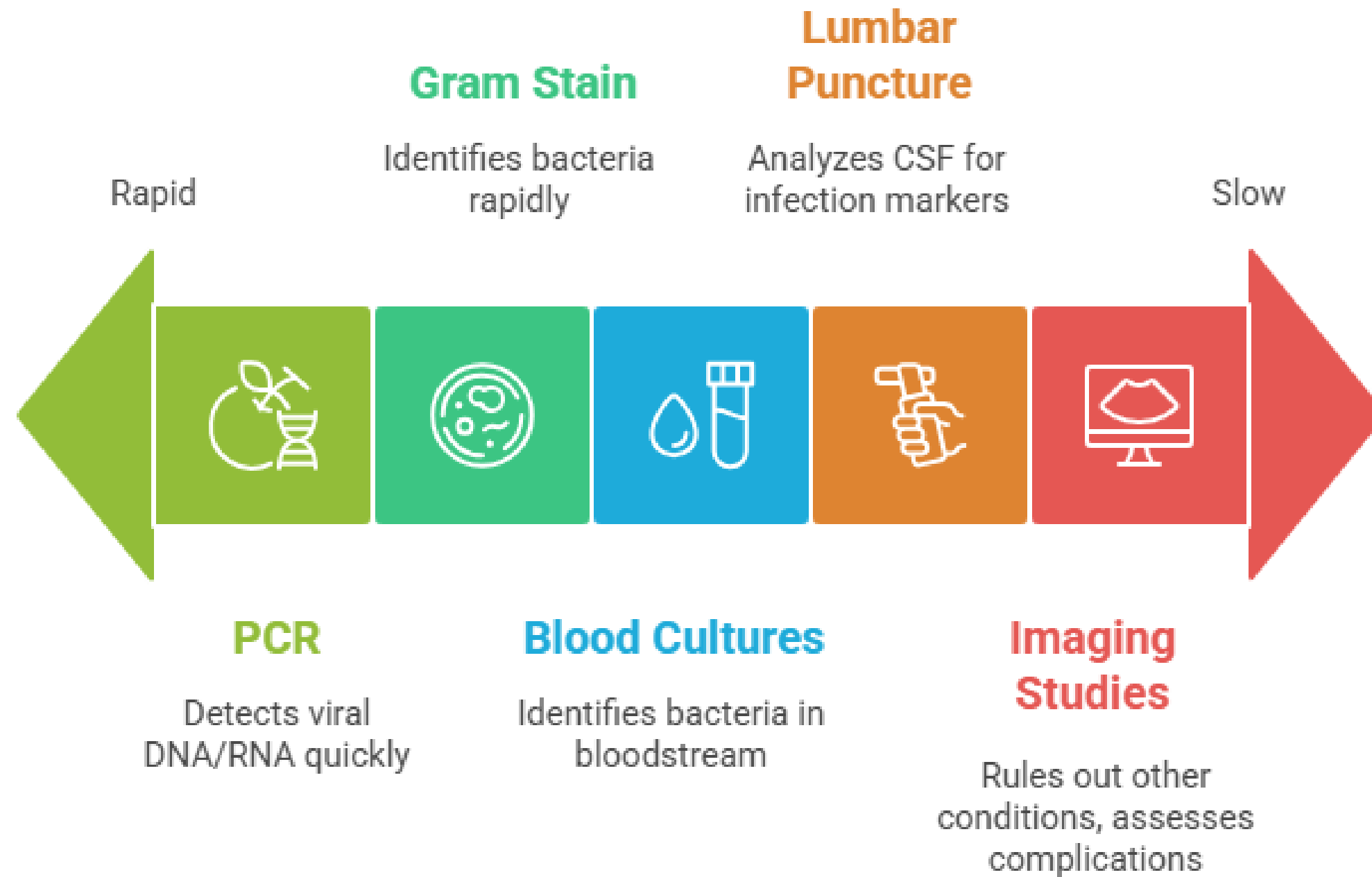
Mode of Transmission:



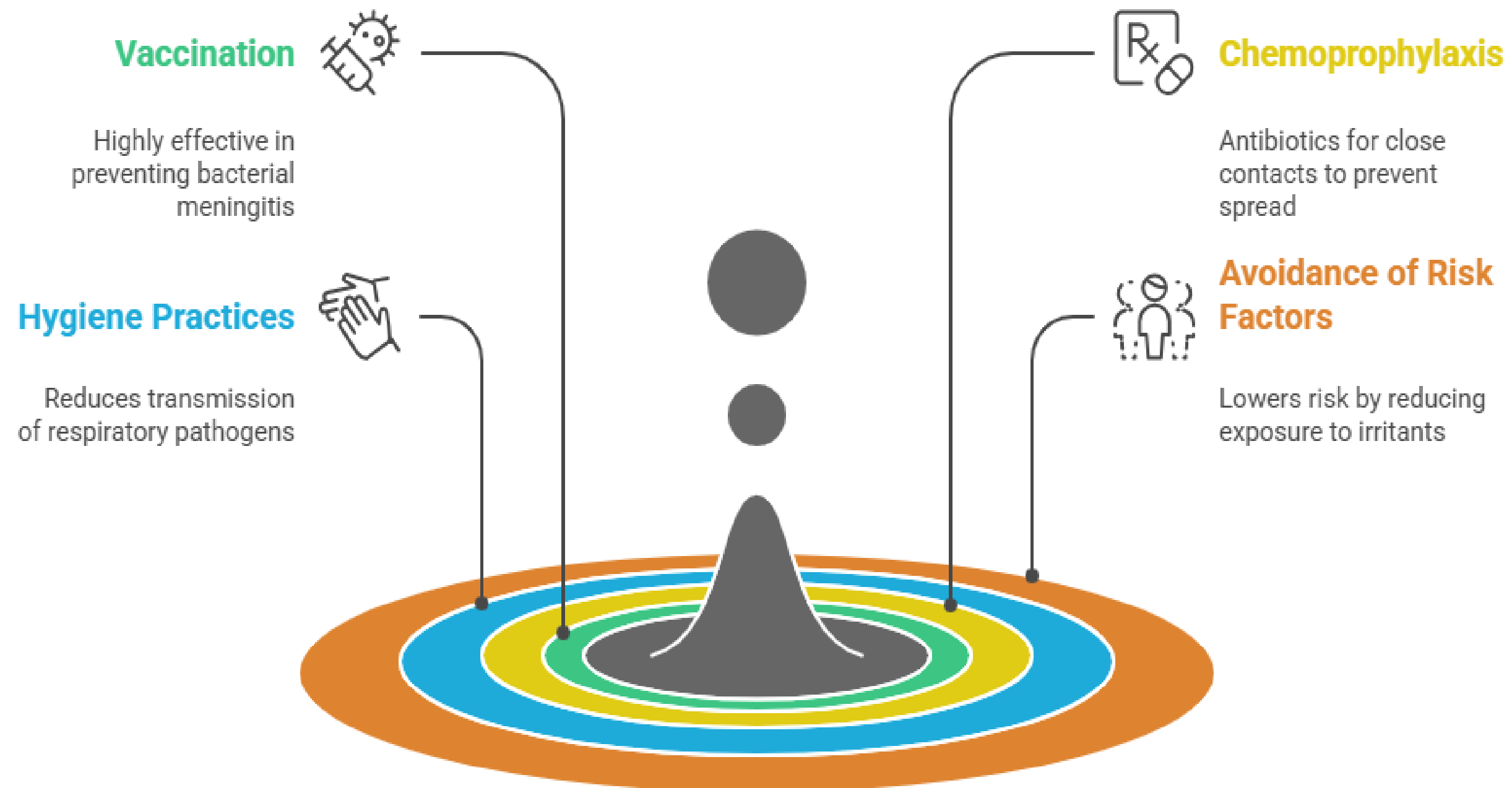
Clinical Features:



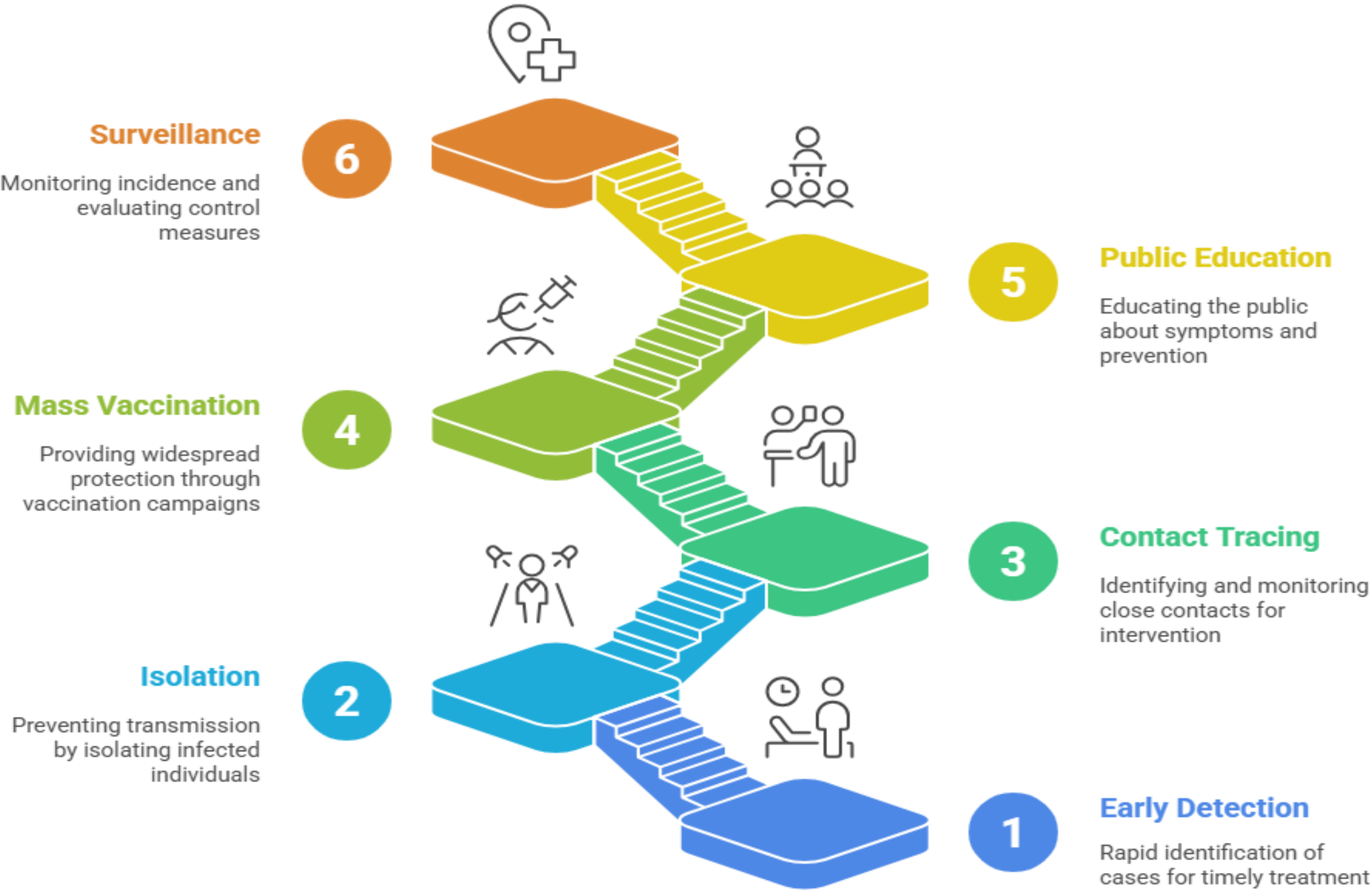
Diagnosis:



Prevention:



Control:



MCQ:



1. Meningitis is best defined as inflammation of which structure?

- A. Brain parenchyma
- B. Spinal cord
- C. Meninges
- D. Cerebral ventricles

2. Which organism is the most common cause of bacterial meningitis in adults?

- A. Haemophilus influenzae
- B. Streptococcus pneumoniae
- C. Escherichia coli
- D. Staphylococcus aureus

MCQ:



3. The classic triad of meningitis includes all EXCEPT:

- A. Fever
- B. Neck stiffness
- C. Altered mental status
- D. Hypotension

4. Which sign is commonly used to assess meningeal irritation?

- A. Babinski sign
- B. Romberg sign
- C. Kernig's sign
- D. Trendelenburg sign

MCQ:



5. Which vaccine helps in the prevention of meningococcal meningitis?

A. BCG

B. DPT

C. OPV

D. MenACWY vaccine

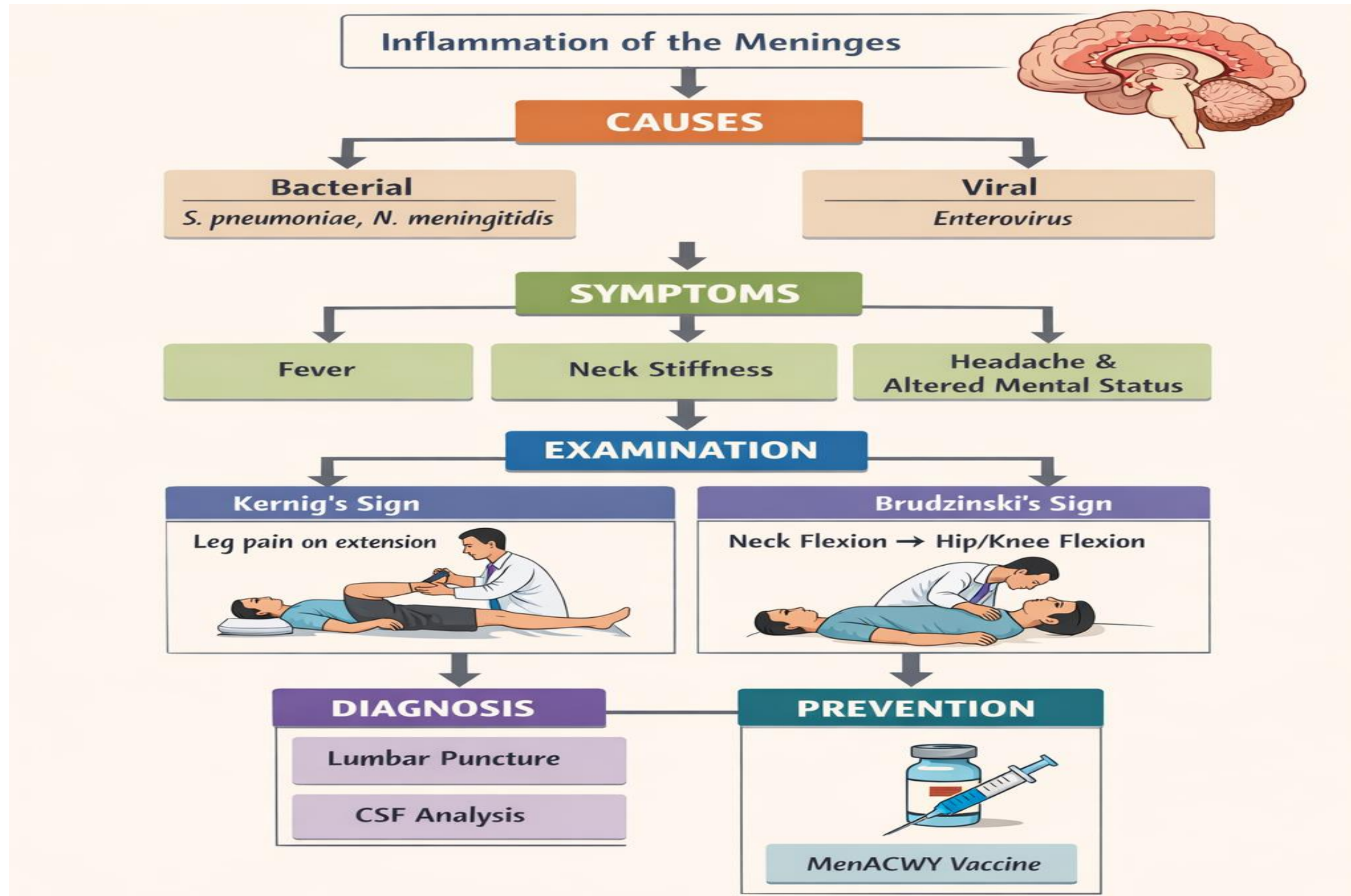
MCQ:



Answer:

1. C
2. B
3. D
4. C
5. D

SUMMARY



THANK YOU