

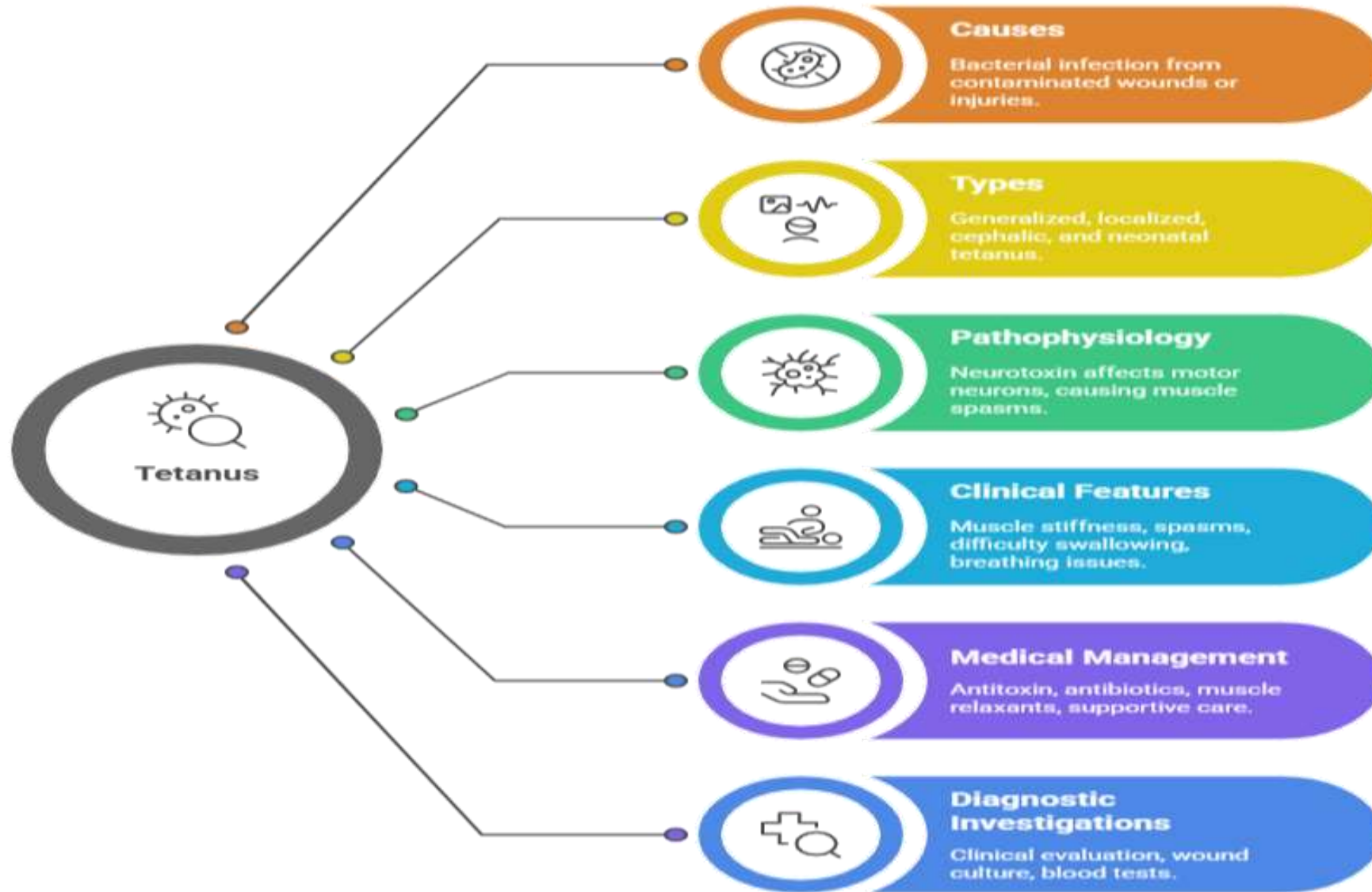
# SNS COLLEGE OF PHYSIOTHERAPY

Coimbatore -641035

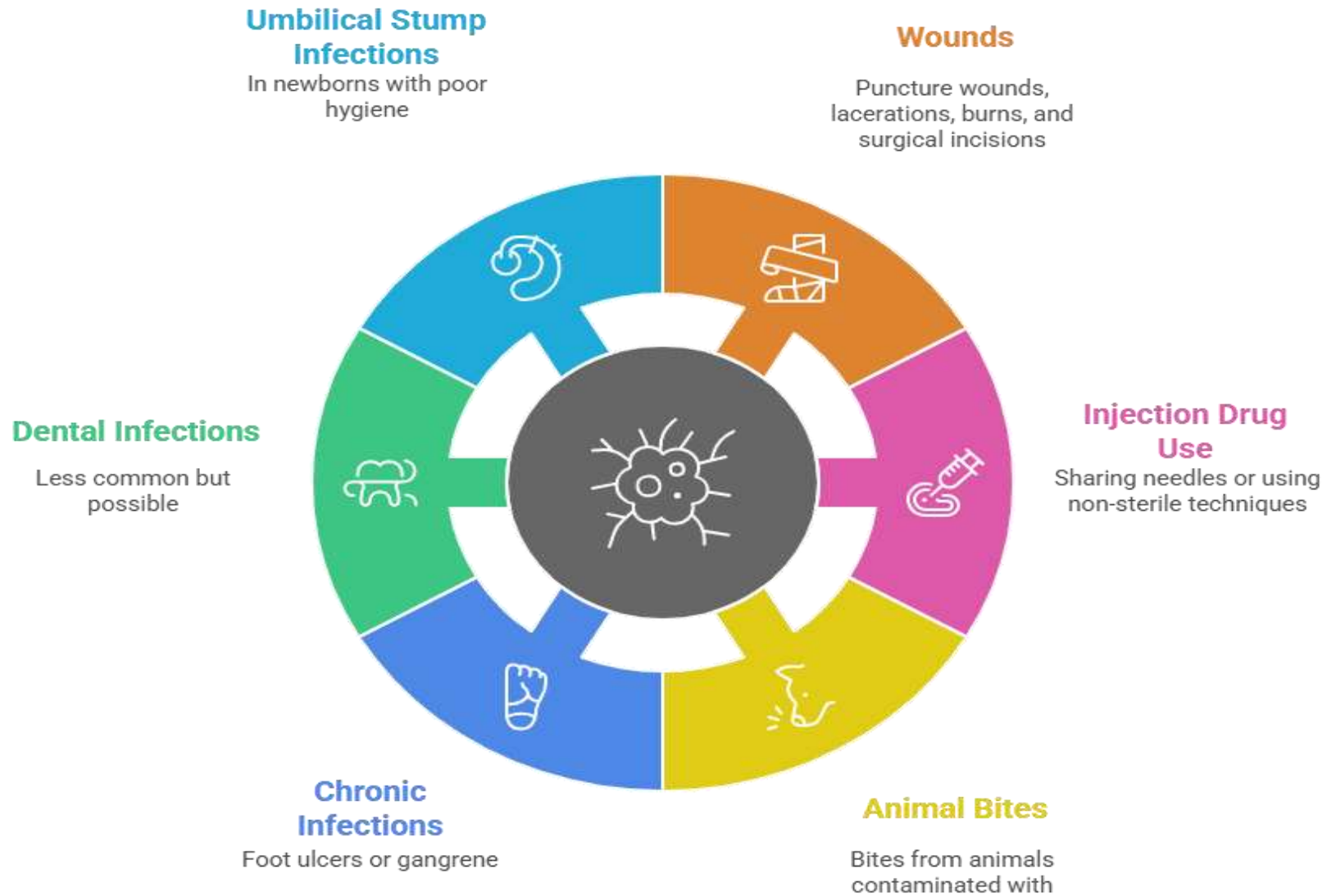


**COURSE NAME** : **BPT., Physiotherapy II Year**  
**SUBJECT** : **General Medicine/General Surgery**  
**UNIT** : **1**  
**TOPIC** : **Tetanus**  
**PREPARED BY** : **Dr.R.Rajakrishnan MPT(NEURO)., DYHE.,  
CDNT.,CKTP., IASTM PRACTITIONER.,  
MARHYTHE PRACTITIONER.,  
Assistant professor  
SNS College of Physiotherapy**

# Introduction:



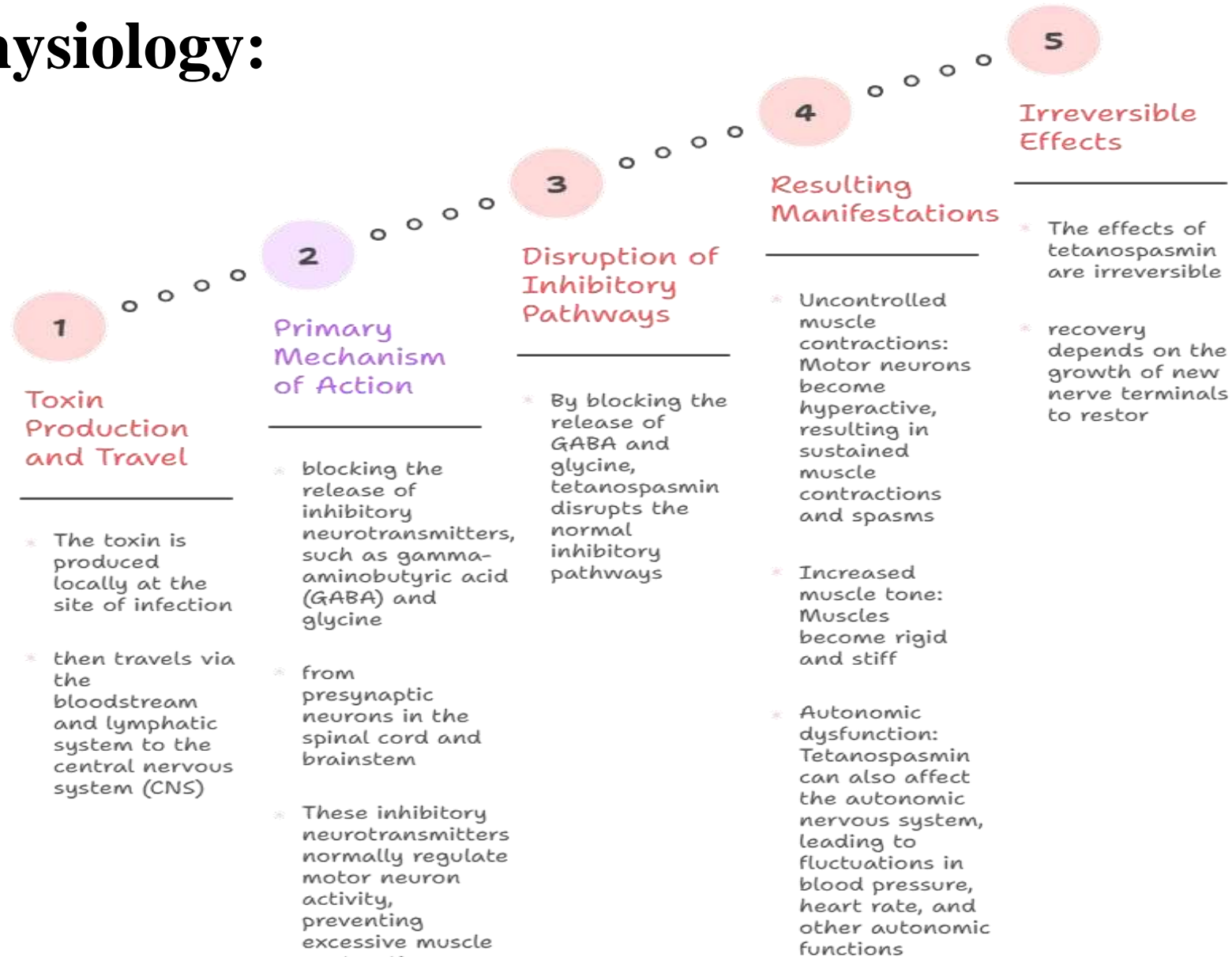
# Causes:



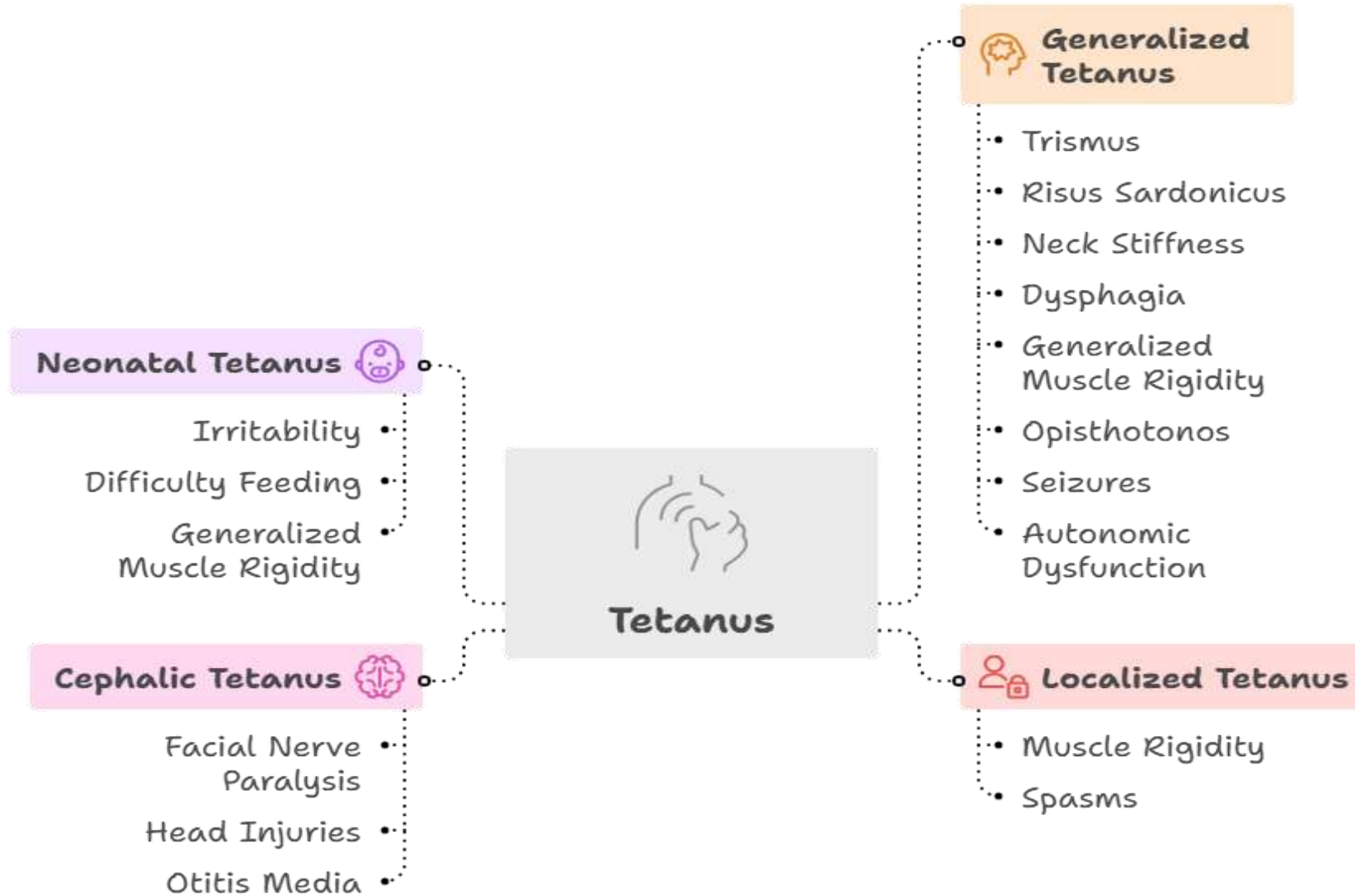
# Types of Tetanus:

Characteristic	Generalized Tetanus	Localized Tetanus	Cephalic Tetanus	Neonatal Tetanus
Prevalence	Most common	Rare	Rare	Newborns
Muscle Spasms	Descending pattern	Persistent, localized	Cranial nerves	Umbilical stump
Severity	Severe	Less severe	Severe	Severe
Progression	Generalized rigidity	May generalize	Facial paralysis	Infant mortality

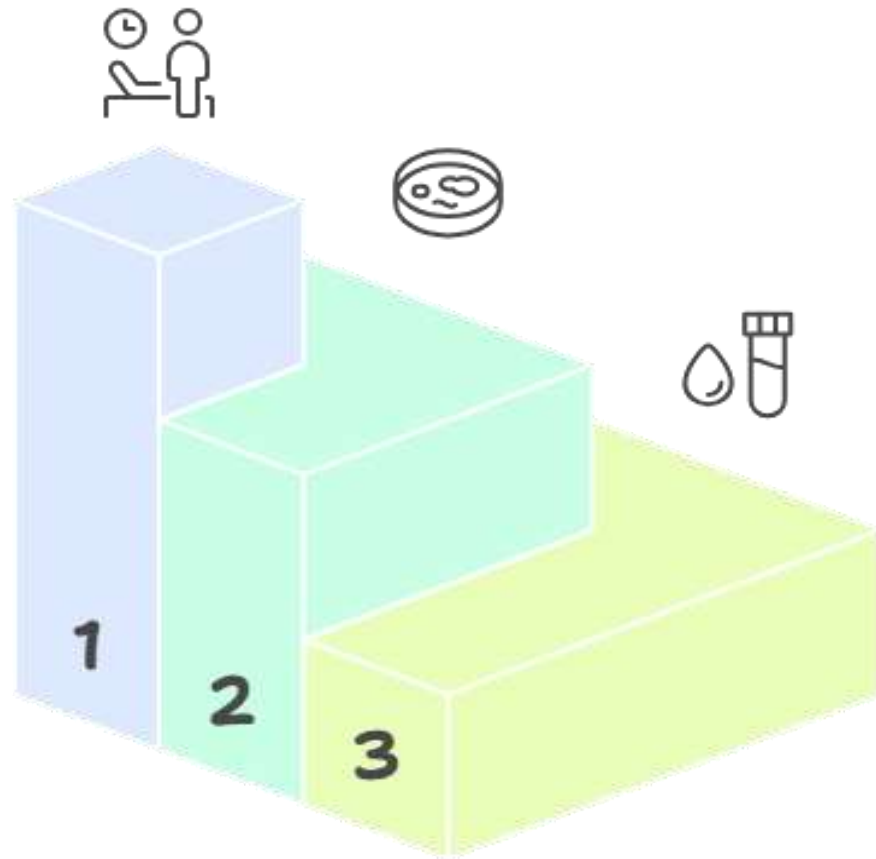
# Pathophysiology:



# Clinical Features:



# Investigations:



## Clinical Assessment

Conduct a thorough history and physical examination to identify key symptoms.

## Wound Culture

Perform cultures to detect \*C. tetani\*, though a negative result doesn't exclude tetanus.

## Antibody Levels

Measure tetanus antibody levels, but note they may not be detectable early in the disease.

# Medical Management:



## **Airway Management**

Ensuring a clear and functional airway for breathing.



## **Nutritional Support**

Providing adequate nutrition to meet metabolic demands.



## **Fluid and Electrolyte Balance**

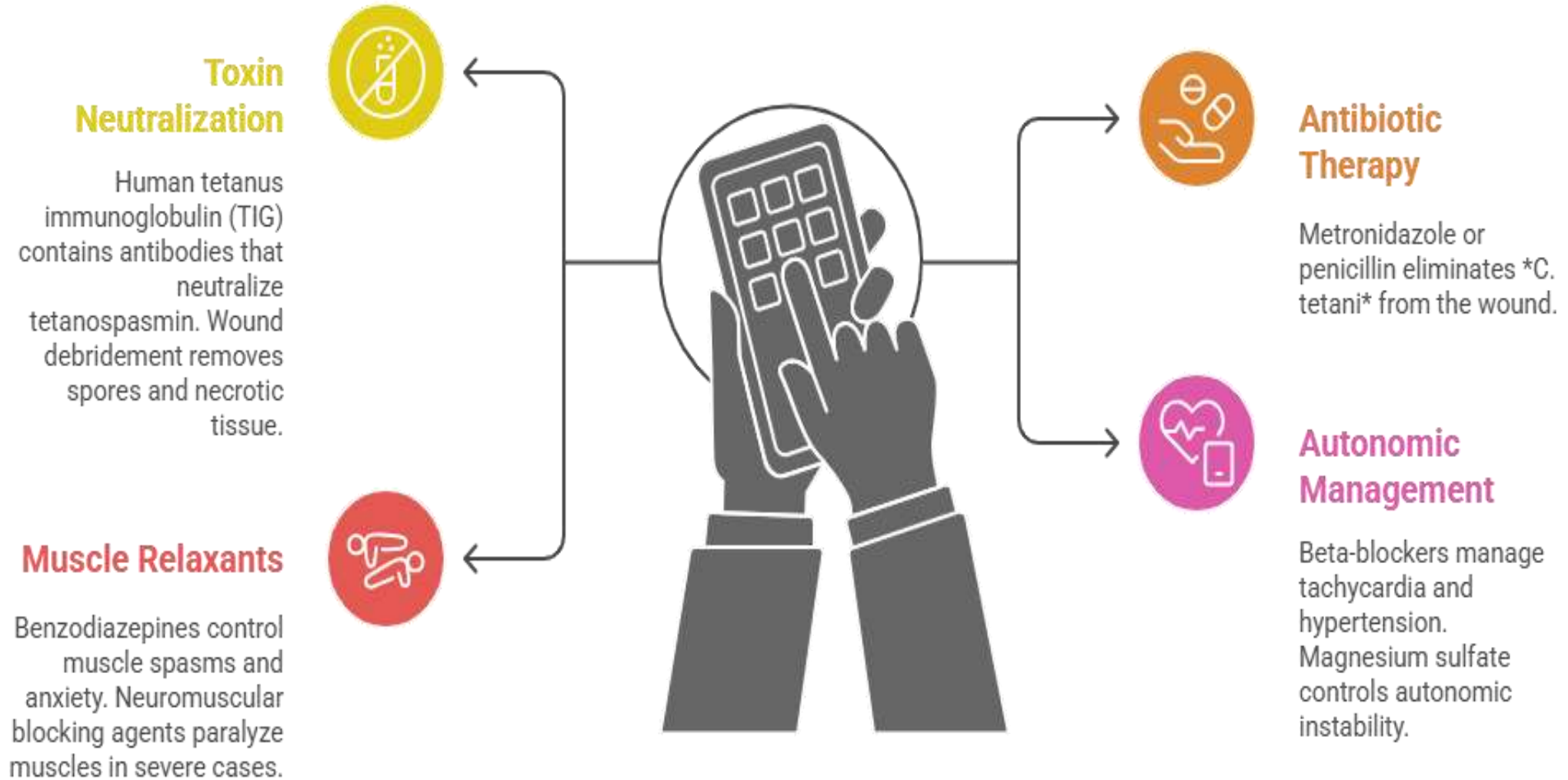
Maintaining hydration and electrolyte levels.



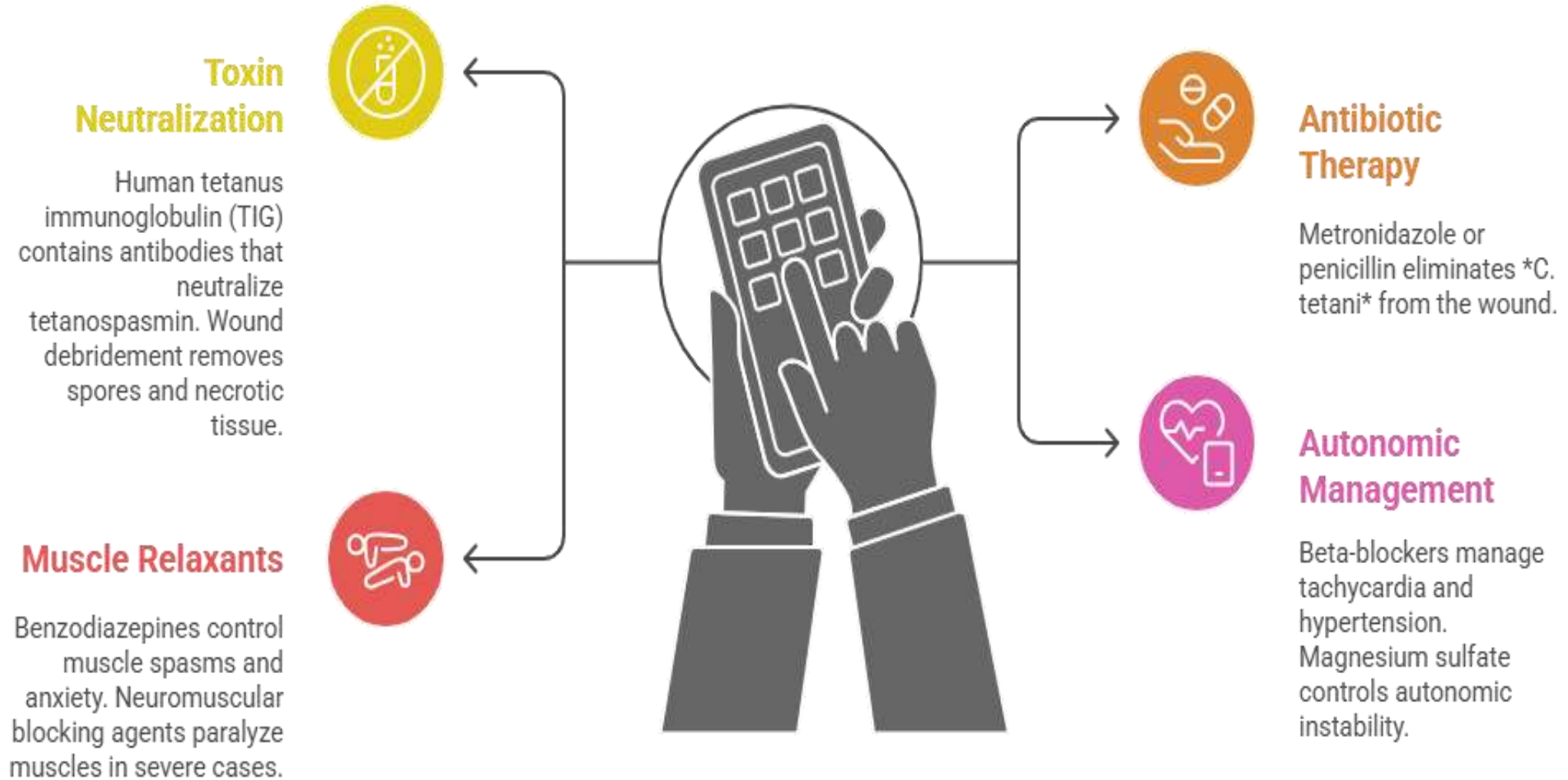
## **Prevention of Complications**

Preventing secondary health issues.

# Medical Management:



# Medical Management:



## Inclass Assessment:

### Case Scenario

#### “A Preventable Emergency”

Mr. R, a 38-year-old construction worker, arrives at the emergency department with complaints of difficulty opening his mouth, painful muscle stiffness in the neck and back, and intermittent muscle spasms for the past 24 hours.

On further history, he reveals that 10 days ago, he sustained a deep puncture wound to his right foot after stepping on a rusted iron rod at the construction site. The wound was washed at home but no medical care was sought.

He is not sure about his tetanus vaccination status and cannot recall receiving any booster dose in adulthood.

### Case-Based MCQs

1. Based on the clinical presentation, the most likely diagnosis is:

A. Rabies B. Tetanus C. Botulism D. Meningitis

2. The most likely mode of transmission in this patient is:

A. Person-to-person spread

B. Airborne transmission

C. Entry of spores through contaminated wound

D. Ingestion of contaminated food

3. The delay in symptom appearance after injury is best explained by:

A. Slow multiplication of virus

B. Incubation period of toxin production

C. Delay in immune response

D. Poor wound healing