

SNS COLLEGE OF PHYSIOTHERAPY

**Affiliated To The TamilNadu Dr.MGR Medical University, Chennai
Coimbatore– 641035**

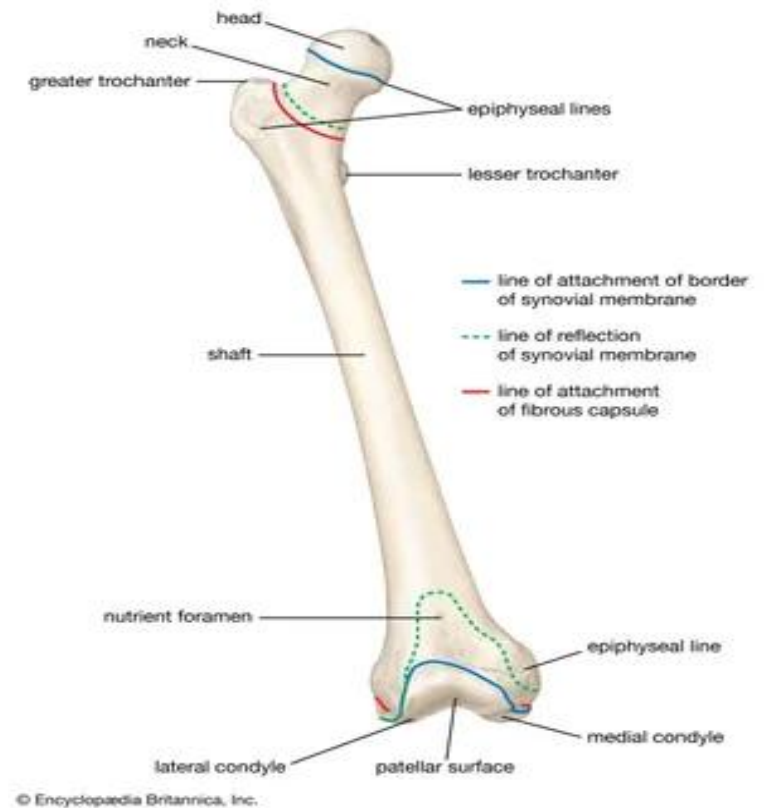
COURSE NAME: ANATOMY

SUBJECT CODE : 6273

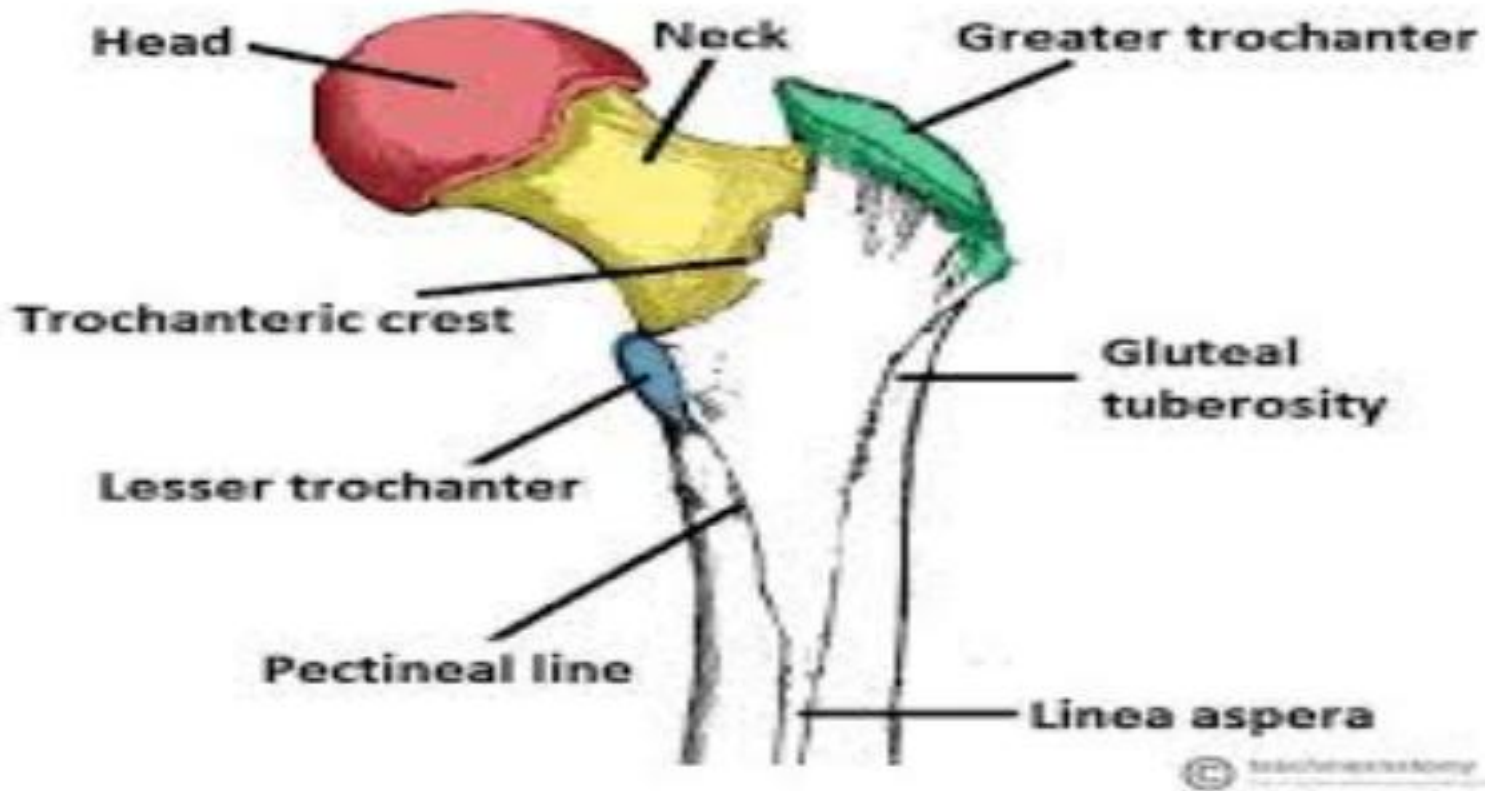
TOPIC: OSTEOLOGY OF FEMUR

DEFINE

- Difficulty in visualizing 3D structure of femur Confusion between upper end landmarks and muscle attachments.
- Need for clear, systematic understanding of femur osteology for clinical application



UPPER END OF FEMUR

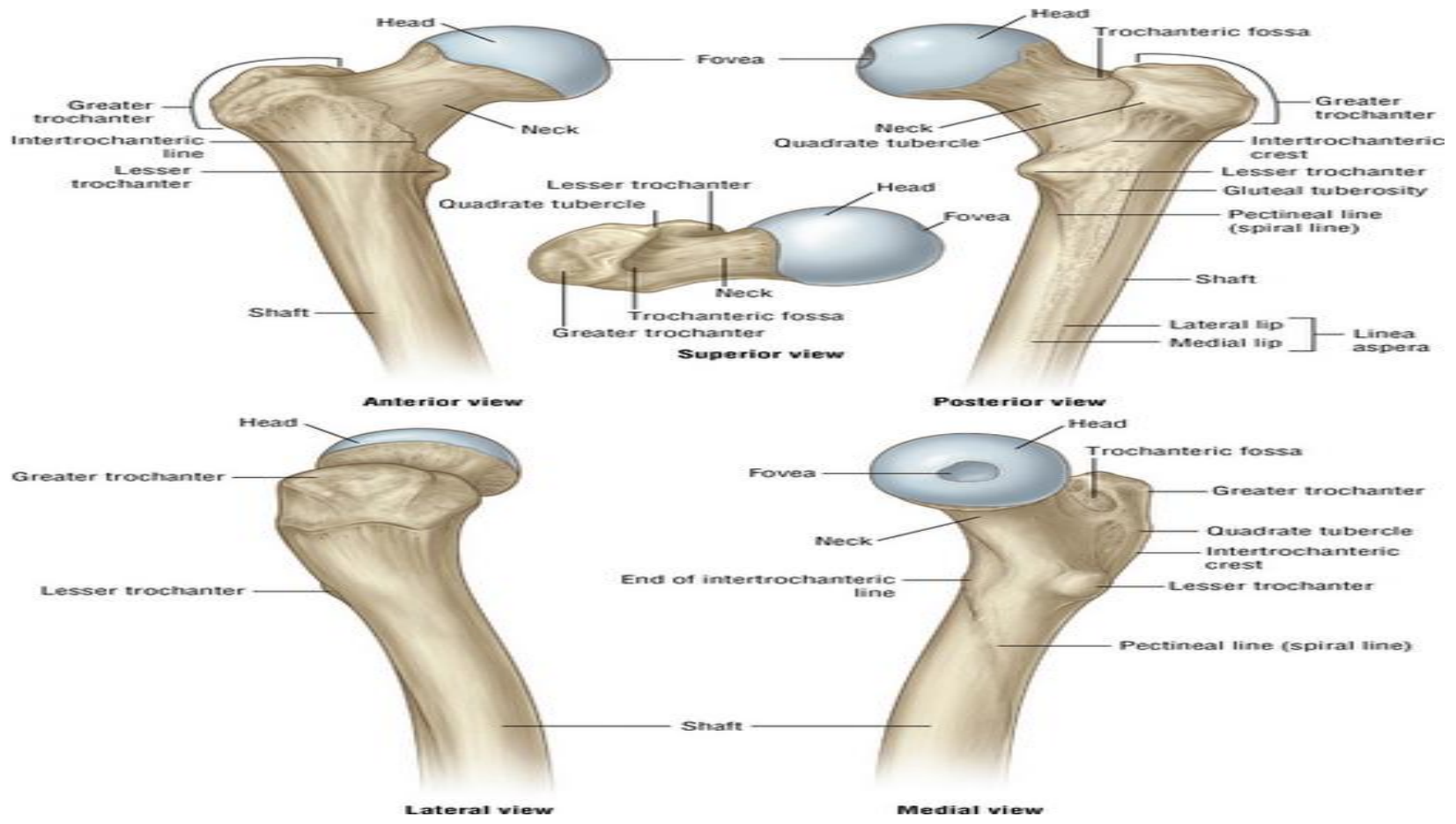


IDEATE

- Use labelled diagrams and 3D models Learn osteology by dividing femur into upper end, shaft, lower end.
- Correlate anatomy with clinical conditions.
- Use mnemonics and comparison tables



PARTS OF FEMUR



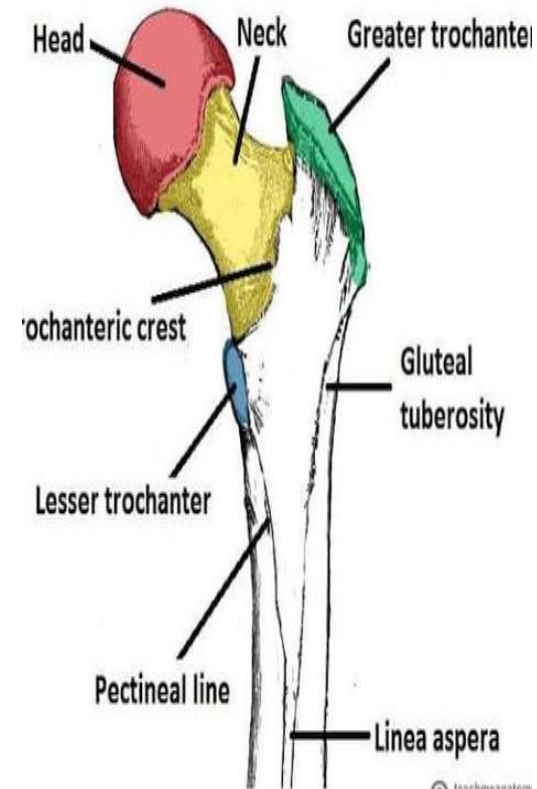
EMPATHIZE

- Femur fractures are common in elderly and athletes Students find femur osteology complex due to multiple landmarks Proper understanding helps in:
 - Diagnosis of fracture :
 - 1.surgical planning
 2. rehabilitation strategies



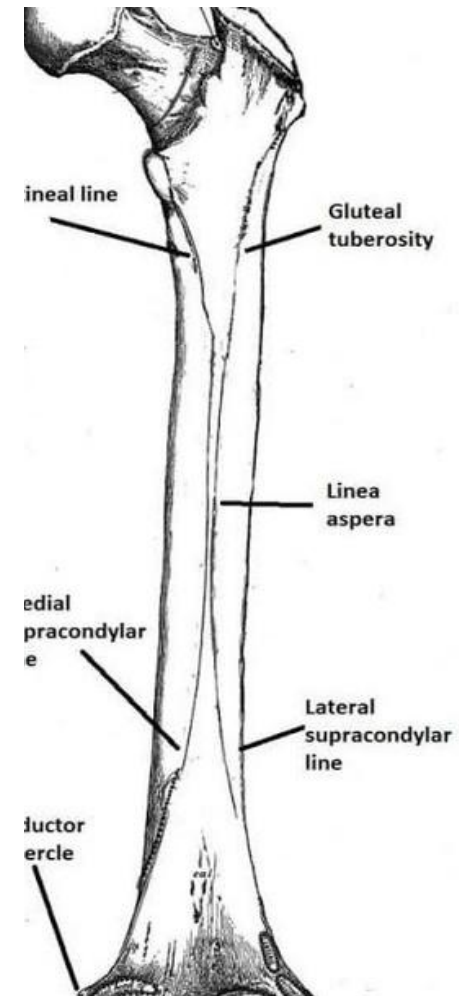
UPPER END OF FEMUR

- Head: smooth, spherical, with fovea capitis
- Neck: connects head to shaft;
- Angle of inclination $\sim 125^\circ$
- Greater trochanter: lateral projection
- Lesser trochanter: posteromedial projection
- Intertrochanteric line & crest



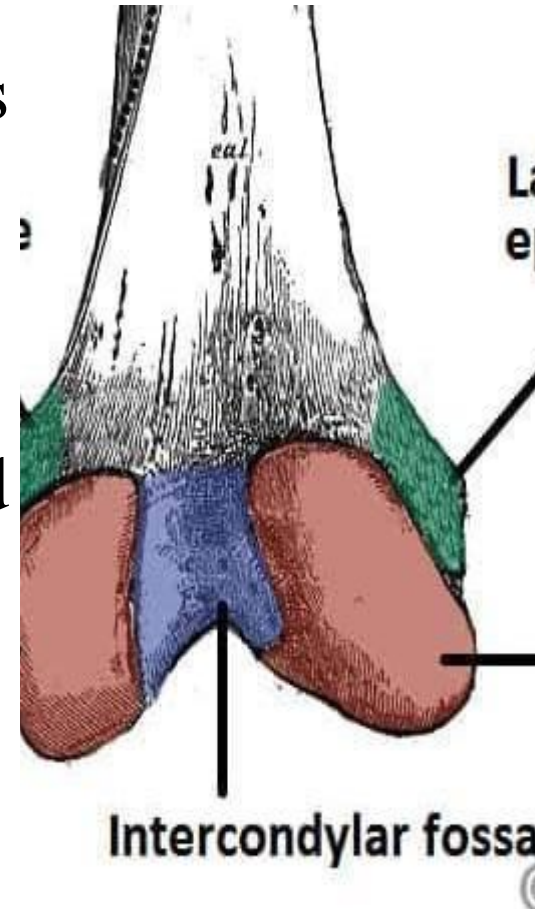
SHAFT OF FEMUR

- Long, slightly curved, cylindrical
- Three surfaces: anterior, medial, lateral
- Three borders: medial, lateral, posterior
- Linea aspera on posterior surface for muscle attachment

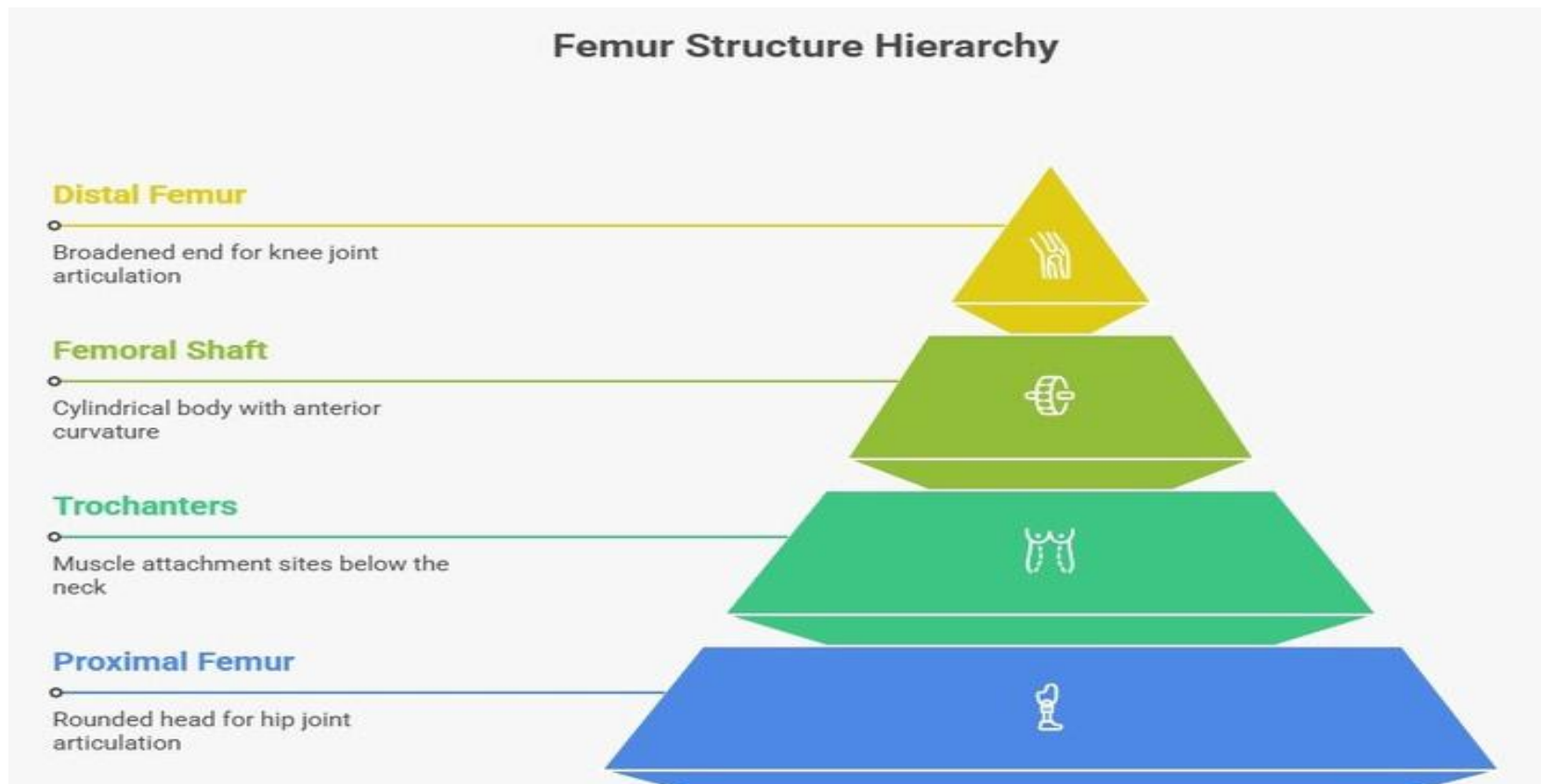


LOWER END OF FEMUR

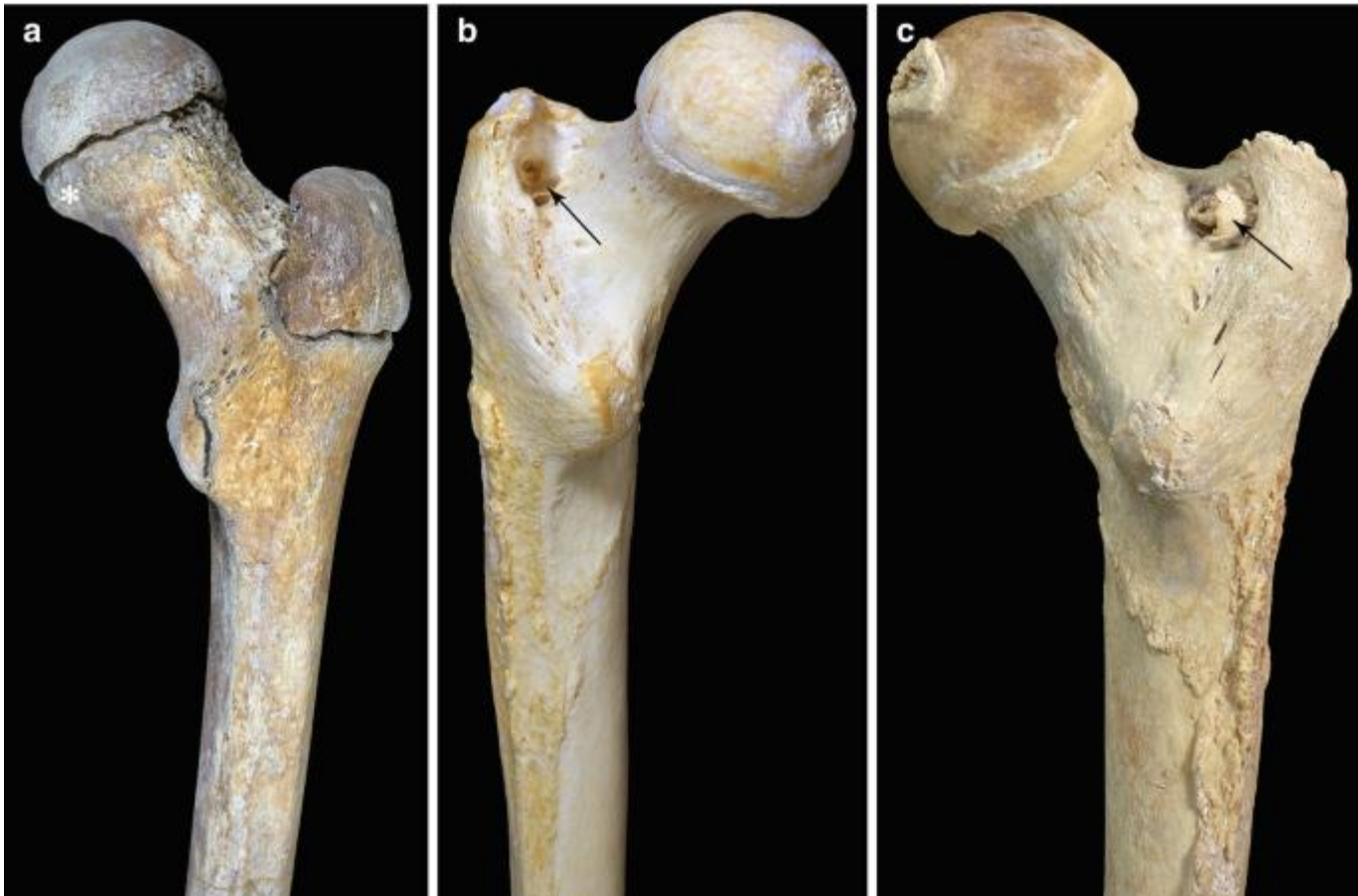
- Add a Medial and lateral condyles
- Intercondylar fossa posteriorly
- Patellar surface anteriorly
- Forms knee joint with tibia and patella



FLOW CHART



FEMUR BONE



IN CLASS ASSESSMENT

1. Describe the shaft of femur including surfaces, borders, and linea aspera.
2. List the muscle attachments on the femur (any four).
3. Describe the lower end of femur and its articular surfaces.
4. Mention the blood supply of the femoral head and its clinical significance
5. Write the applied anatomy of femur (any two conditions).

IN CLASS ASSESSMENT

6. Define the femur and mention its position in the human body.
7. Describe the side determination of femur with reasons
8. Enumerate the parts of femur and name the structures present at the upper end.
9. Describe the head and neck of femur with their anatomical features.
10. Write a short note on the greater and lesser trochanters.

THANK YOU

