

SNS COLLEGE OF PHYSIOTHERAPY

Affiliated To The TamilNadu Dr.MGR Medical University ,Chennai
Coimbatore– 641035

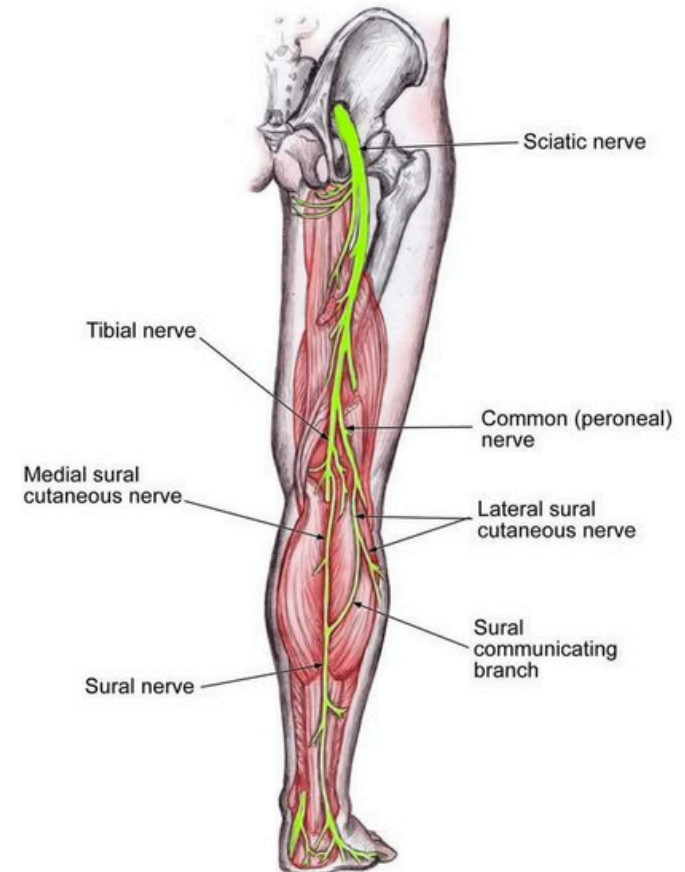
COURSE NAME : ANATOMY

SUBJECT CODE : 6273

TOPIC : PLEXUS OF LOWER LIMB

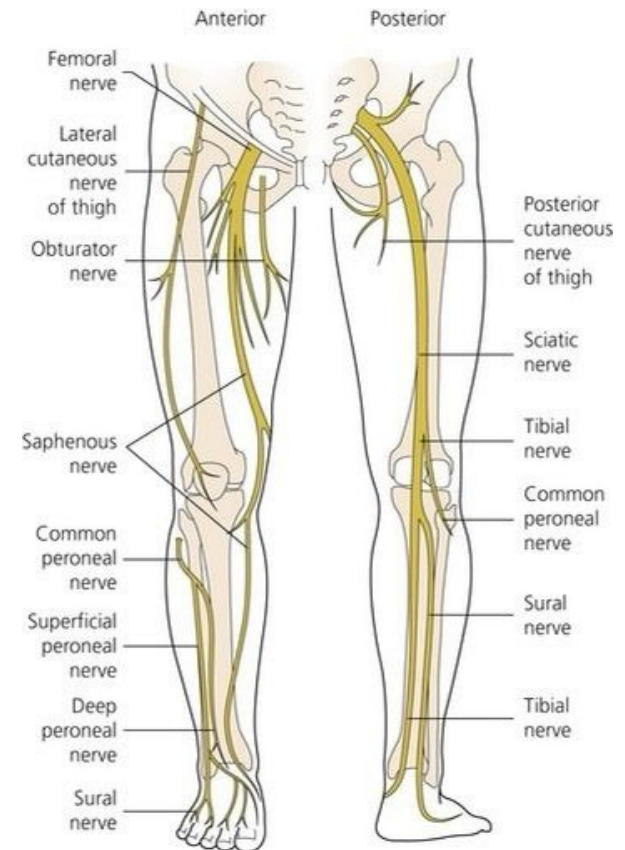
DEFINE

- Difficulty in Tracing nerves from plexus to muscles.
- Remembering segmental innervation
Relating nerve injury to muscle weakness.
- Need to clearly understand Formation of lumbar and sacral plexus.
- Motor and sensory distribution
Clinical relevance for physiotherapy practice



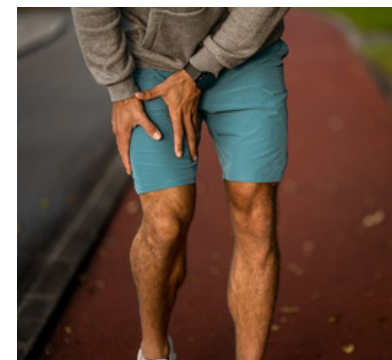
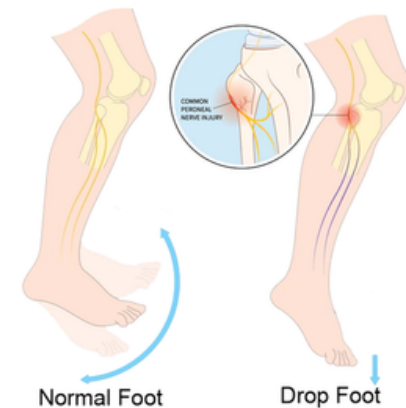
IDEATE

- Learn plexus using colour-coded diagrams and root–muscle–action correlation tables for easy visualization and memory retention.
- Apply anatomical knowledge through gait analysis, case-based discussions, and nerve injury scenarios to improve clinical reasoning.
- Integrate plexus anatomy with functional movements, rehabilitation planning, and neurological assessment for practical clinical application.



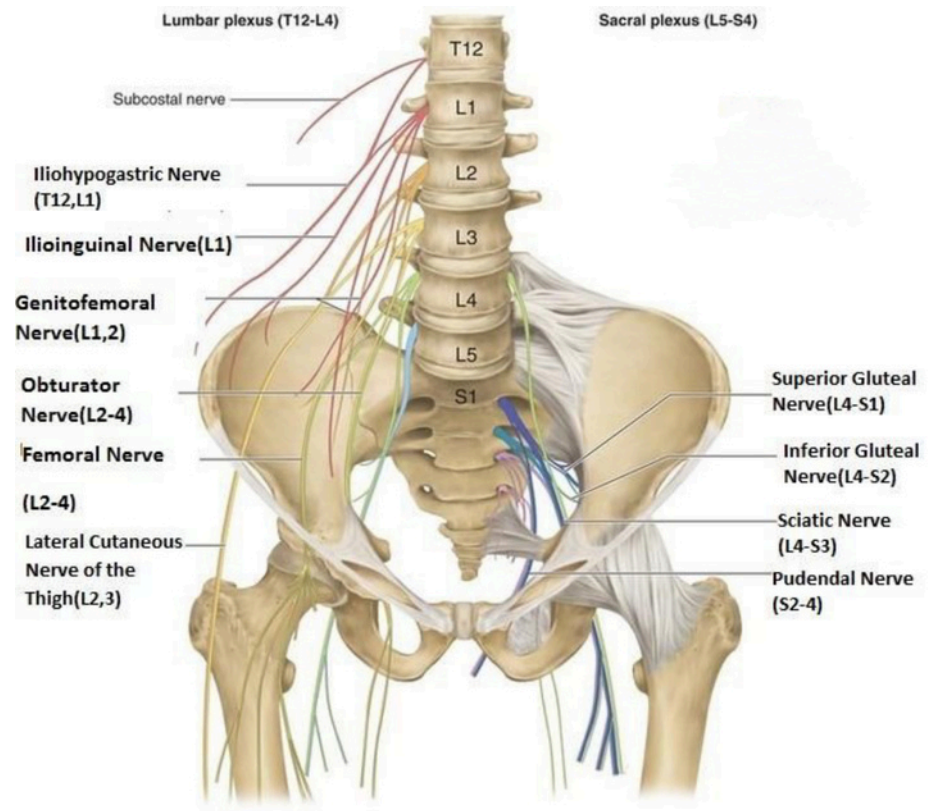
EMPATHIZE

- Injuries to lower limb nerves lead to difficulty in walking and standing, with loss of sensation, muscle weakness, and functional limitations in daily activities.
- Patients with plexus or peripheral nerve injuries commonly experience pain, numbness, paralysis, and gait abnormalities such as foot drop and limping.
- Students often face challenges due to confusing nerve pathways and difficulty correlating anatomical knowledge with clinical signs.



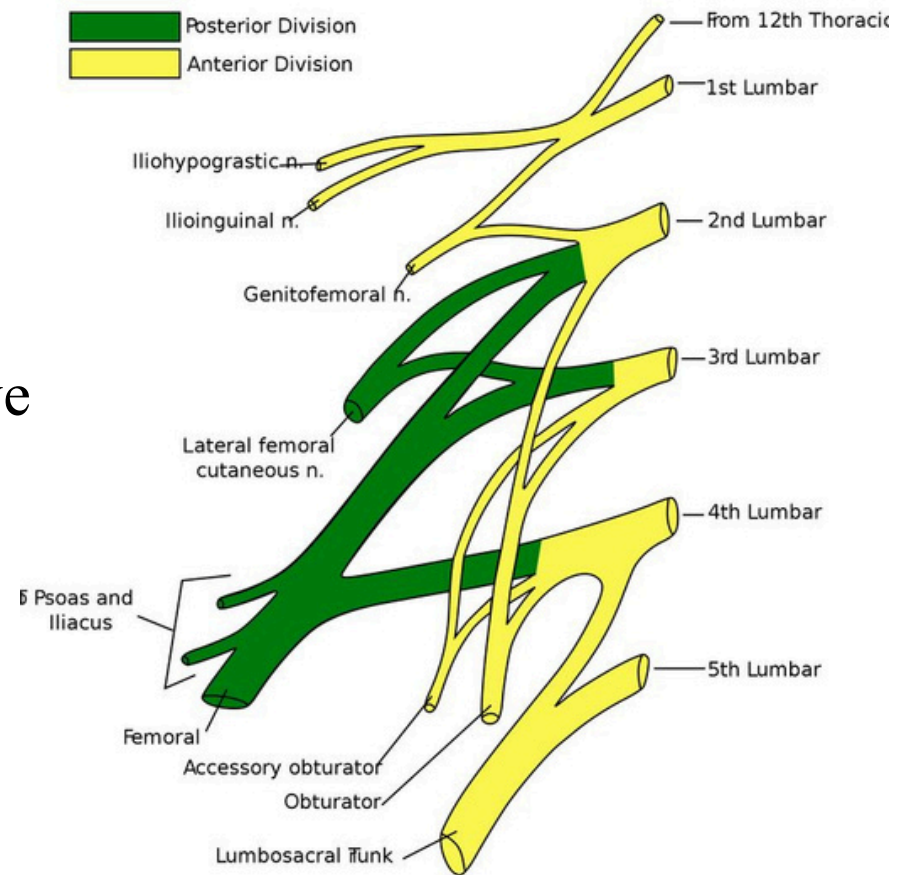
LUMBAR PLEXUS: Formation & Location

- Formed by anterior rami of L1–L4 spinal nerves Sometimes receives contribution from T12
 Located within psoas major muscle Supplies anterior and medial compartments of thigh



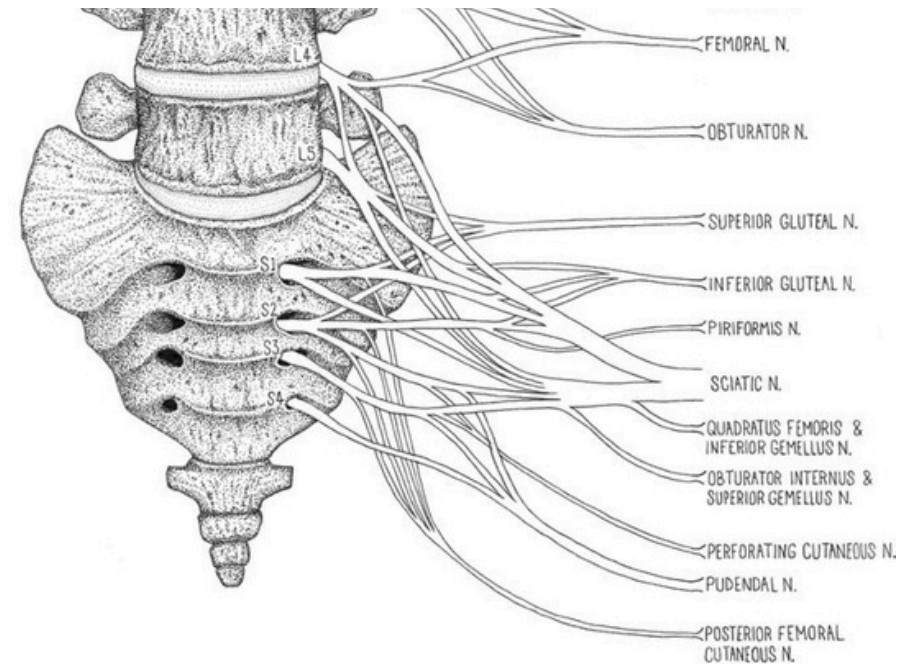
Branches of Lumbar Plexus

- Iliohypogastric nerve (L1)
- Ilioinguinal nerve (L1)
- Genitofemoral nerve (L1–L2)
- Lateral femoral cutaneous nerve (L2–L3)
- Femoral nerve (L2–L4)
- Obturator nerve (L2–L4)

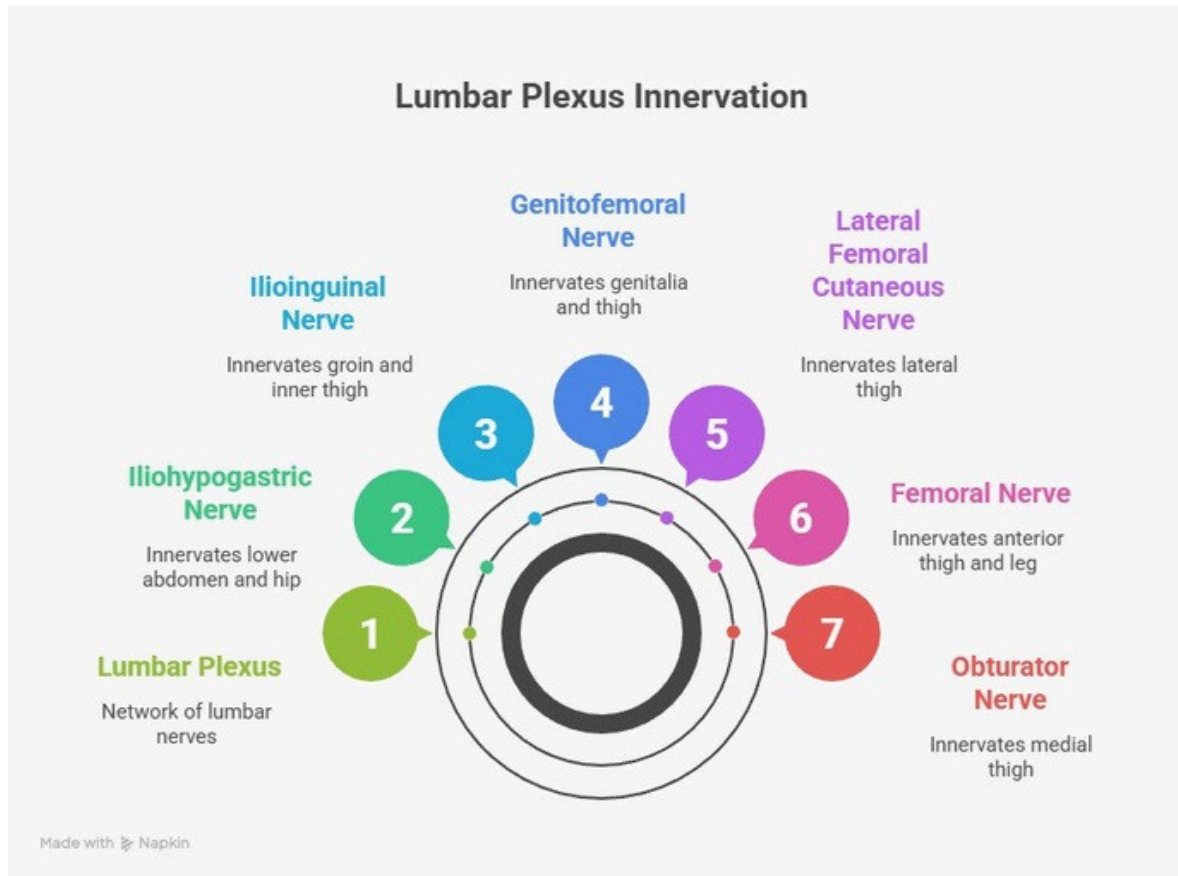


SACRAL PLEXUS : FORMATION and LOCATION

- Formed by lumbosacral trunk (L4–L5) and S1–S4 Located on anterior surface of piriformis muscle Supplies posterior thigh, leg, foot, and gluteal region



FLOW CHART



In class assessment

1. Define a nerve plexus and name the plexuses supplying the lower limb.
2. Describe the formation and location of the lumbar plexus.
3. Enumerate the branches of the lumbar plexus and function.
4. Write a short note on the femoral nerve—root value
5. Describe the obturator nerve and mention its clinical importance.



In class assessment

6. Describe the formation of the sacral plexus.
7. Enumerate the branches of the sacral plexus.
8. Write a short note on the sciatic nerve.
9. Explain the functional significance of lower limb plexus in gait.
10. Write the applied anatomy of lower limb plexus (any two nerve injuries).



Thank you

