

# SNS COLLEGE OF PHYSIOTHERAPY

Affiliated To The TamilNadu Dr.MGR Medical University, Chennai  
Coimbatore– 641035

---

**COURSE NAME** :ANATOMY

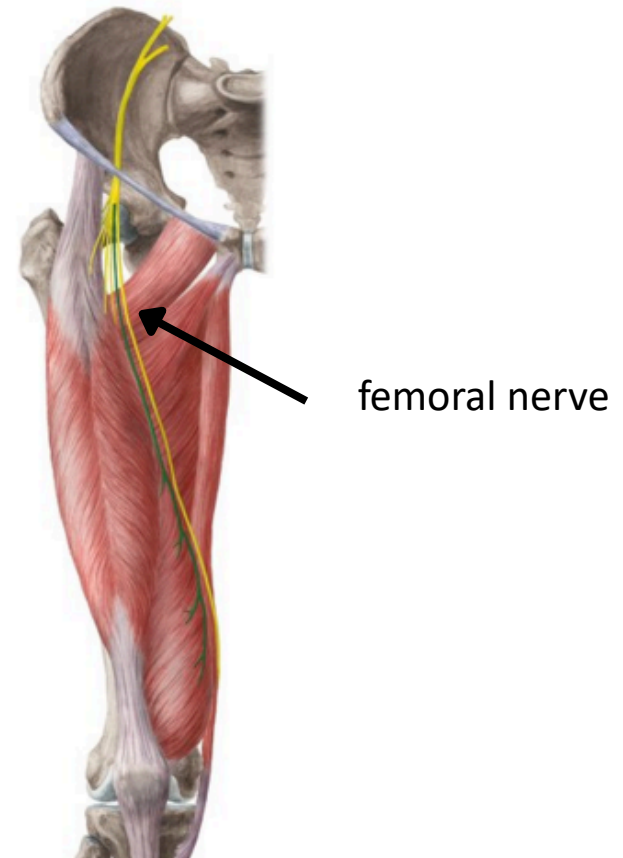
**SUBJECT CODE** : 6273

**TOPIC** : FEMORAL NERVE

# DEFINE

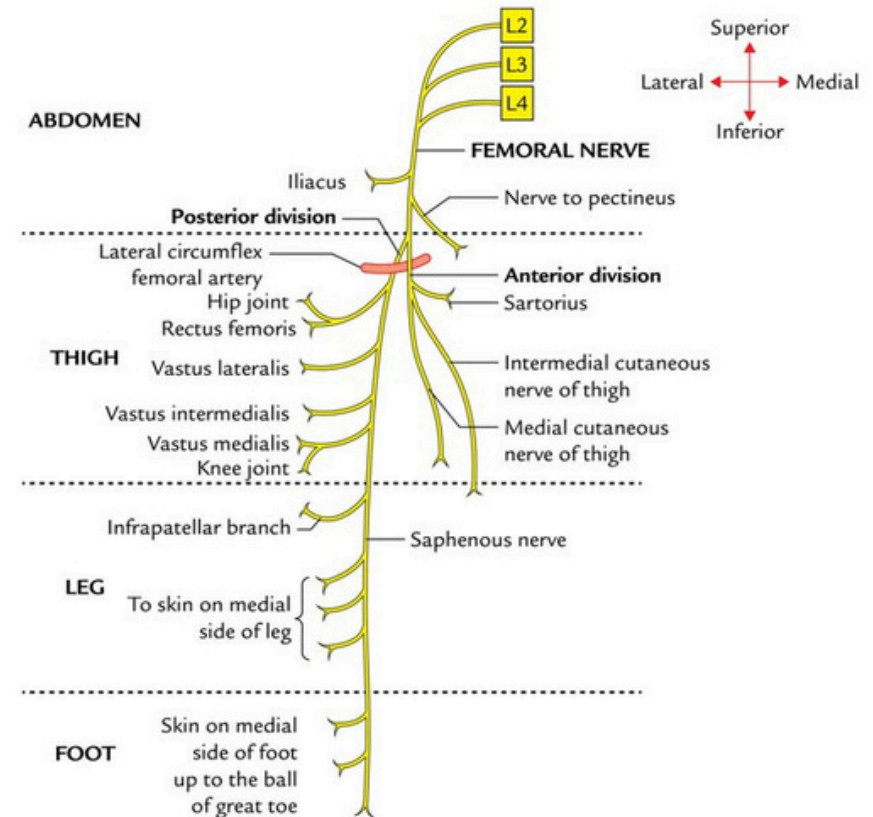
---

- Femoral nerve is the largest branch of the lumbar plexus
- Formed by posterior divisions of L2, L3, L4 spinal nerves.
- It is the principal motor nerve of the anterior compartment of thigh.
- Supplies both motor and sensory innervation



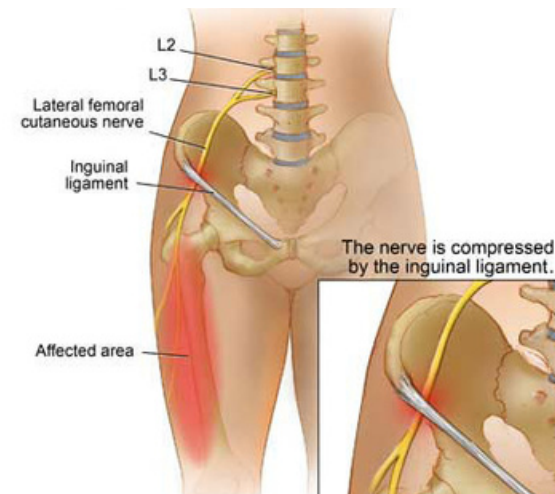
# IDEATE

- Learn femoral nerve by:  
Tracing root → course → branches → function
- Using diagrams and clinical case scenarios.
- Apply knowledge in Gait analysis Muscle strength testing Rehabilitation planning



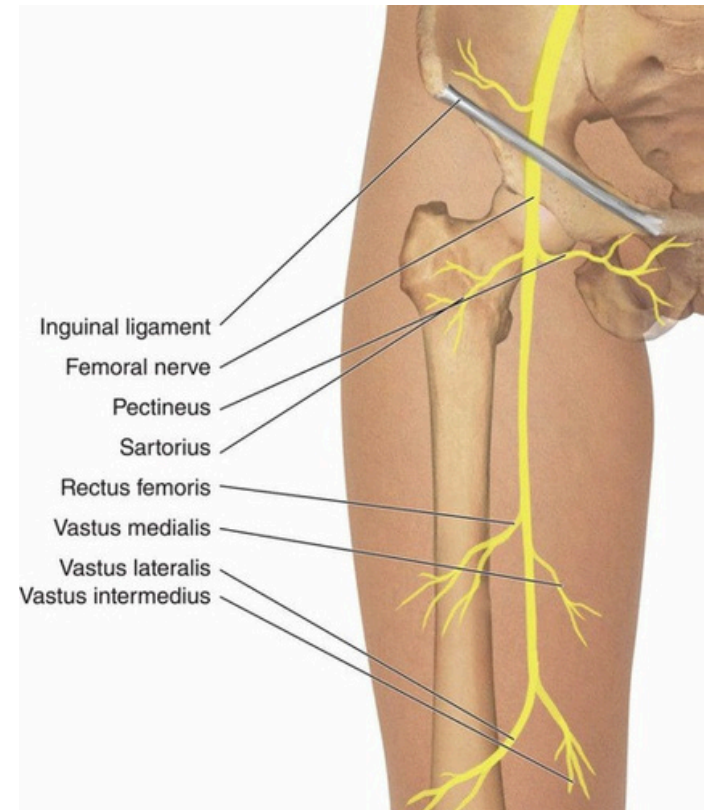
# EMPATHIZE

- Femoral nerve injury affects standing, walking, stair climbing, and sit-to-stand functional movements during daily activities.
- Patients may experience knee buckling, muscle weakness, and sensory loss affecting lower limb function significantly.
- Students often find femoral nerve course confusing and struggle correlating nerve damage with clinical symptoms.



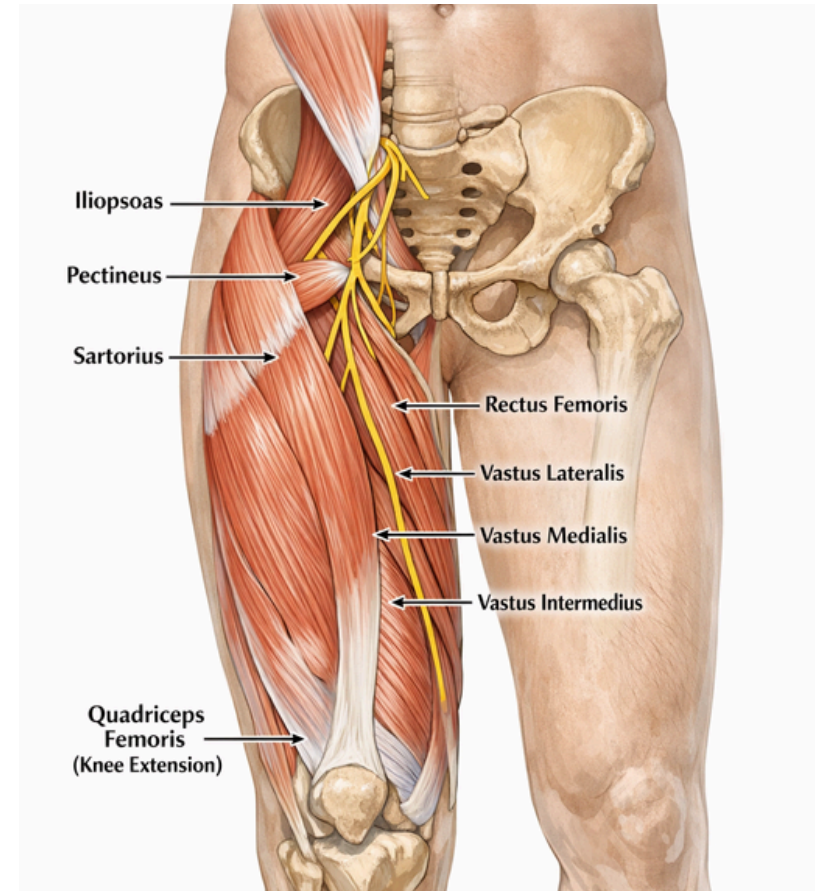
# FORMATION AND COURSE

- Formed within psoasmajor muscle .
- Emerges from its lateral border.
- Passes beneath inguinal ligament .
- Enters thigh through femoral triangle.



# MOTOR AND SENSORY SUPPLY

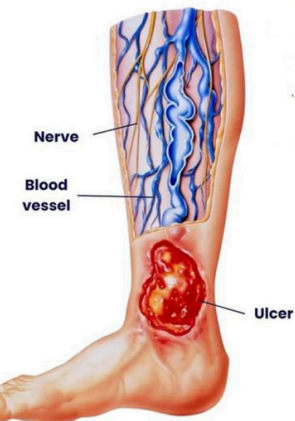
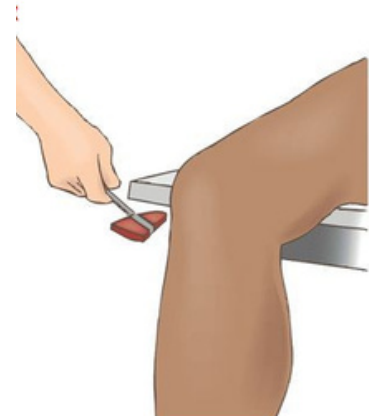
- Motor supply: Iliacus, Sartorius, Quadriceps, femoris.
- Sensory supply: Anterior and medial thigh, Medial leg and foot (via saphenous nerve)



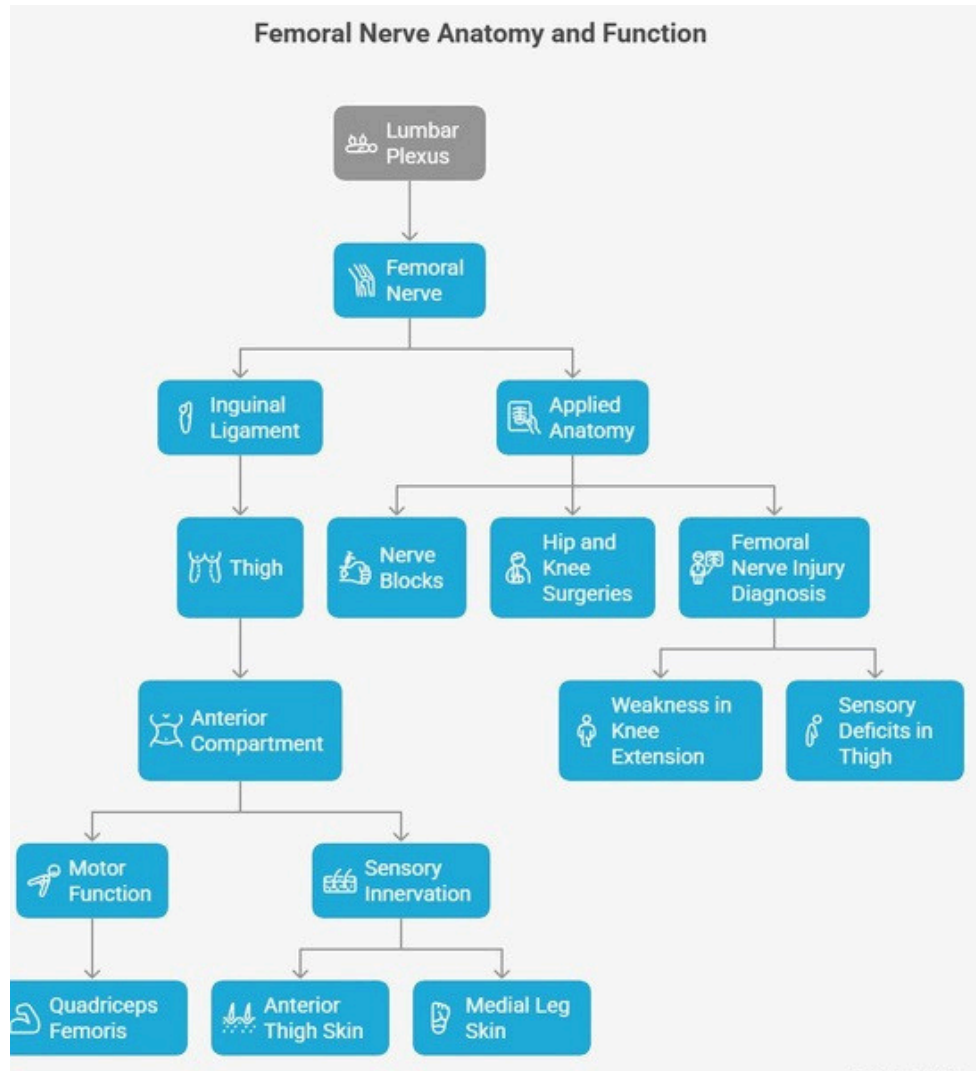
# CONCLUSION

---

- Femoral nerve injury leads to loss of knee extension, reduced or absent patellar reflex, and sensory loss.
- Common causes include pelvic trauma, surgical injury, and diabetic neuropathy.
- Knowledge of the femoral nerve is crucial for accurate assessment and effective rehabilitation planning.



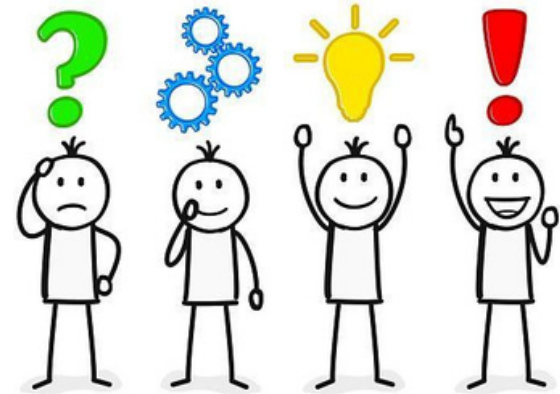
# FLOW CHART



# In class assessment

---

1. Define the femoral nerve and mention its root value.
2. Describe the formation and course of the femoral nerve .
3. What is the relation of femoral nerve in the femoral triangle ?
4. Enumerate the branches of the femoral nerve.
5. Write a short note on the motor supply of the femoral nerve.



# In class assessment

---

6. Describe the sensory distribution of the femoral nerve.
7. Explain the functional importance of the femoral nerve in gait.
8. What are the clinical signs of femoral nerve injury?
9. Mention the common causes of femoral nerve injury.
10. How can knowledge of the femoral nerve be applied in physiotherapy assessment and rehabilitation?



# Thank you

---

